

## Product datasheet for RC200169

### CFAP298 (NM\_021254) Human Tagged ORF Clone

#### Product data:

Product Type:	Expression Plasmids
Product Name:	CFAP298 (NM_021254) Human Tagged ORF Clone
Tag:	Myc-DDK
Symbol:	CFAP298
Synonyms:	C21orf48; C21orf59; CILD26; FBB18; Kur
Mammalian Cell Selection:	Neomycin
Vector:	pCMV6-Entry (PS100001)
E. coli Selection:	Kanamycin (25 ug/mL)
ORF Nucleotide Sequence:	>RC200169 ORF sequence Red=Cloning site Blue=ORF Green=Tags(s)

TTTTGTAATACGACTCACTATAGGGCGGCCGGAATTCGTCGACTGGATCCGGTACCGAGGAGATCTGCC  
GCC**CGGATCGCC**

ATGGTTCTGCTGCACGTGAAGCGGGGCGACGAGAGCCAGTTCCTGCTGCAGGCGCCTGGGAGTACCGAGC  
TGGAGGAGCTCACGGTGCAGGTGGCCCGGGTCTATAATGGGCGGCTCAAGGTGCAGCGCCTCTGCTCAGA  
AATGGAAGAATTAGCCGAACATGGCATAATTCCTCCCTCCTAATATGCAAGGACTGACCGATGATCAGATT  
GAAGAATTGAAATTGAAGGATGAATGGGTGAAAAATGCGTACCCAGCGGAGGTGCAGTGTTAAAAAAGG  
ATGATATTGGACGAAGGAATGGCAAGCTCCAAATGAGAAGATGAAGCAAGTGTTAAAGAAGACTATAGA  
AGAAGCCAAAGCAATAATATCTAAGAAACAAGTGAAGCCGGTGTCTGTGTTACCATGGAGATGGTGAAA  
GATGCCTTGGACCAGCTTCGAGGCGCGGTGATGATTGTTTACCCCATGGGGTTGCCACCGTATGATCCCA  
TCCGCATGGAGTTTAAAAATAAGGAAGACTTGTGCGGAACACAGGCAGGGCTCAACGTCATTAAGAGGC  
AGAGGCGCAGCTGTGGTGGGCGAGCAAGGAGCTGAGAAGAACGAAGAAGCTTTCAGACTACGTGGGGAAG  
AATGAAAAACCAAAATATCGCCAAGATTGAGCAAGGGGACAGGGAGCTCCAGCCGAGAGCCTATTA  
TTAGCAGTGAGGAGCAGAAGCAGCTGATGCTGTACTATCACAGAAGACAAGAGGAGCTCAAGAGATTGGA  
AGAAAAATGATGATGATGCCTATTTAAACTCACCATGGGCGGATAACACTGCTTTGAAAAGACATTTTCAT  
GGAGTAAAGACATAAAGTGGAGACCAAGA

**ACGCGT**ACGCGGCGCCTCGAGCAGAAACTCATCTCAGAAGAGGATCTGGCAGCAAATGATATCCTGGATT  
ACAAGGATGACGACGATAAGGTTTAA



[View online »](#)

**Protein Sequence:** >RC200169 protein sequence  
Red=Cloning site Green=Tags(s)

MVLLHVKRGDESQFLLQAPGSTELEELTVQVARVYNGRLKVQRLCSEMEELAEHGIFLPPNMQGLTDDQI  
 EELKCLKDEWGEKCVPSGGAVFKKDDIGRRNGQAPNEKMKQVLKKTIEEAKAIIISKQVEAGVCVTMEMVK  
 DALDQLRGAVMIVYPMGLPPYDPIRMEFENKEDLSGTQAGLNVIKEAEAQLWWAAKELRRTKKLSDYVVGK  
 NEKTKIIAKIQQRGQAPAREPIISSEEQQLMLYYHRRQEELKRLEENDDDAYLNSPWADNTALKRHFH  
 GVKDIKWRPR

TRTRPLEQKLISEEDLAANDILDYKDDDDKV

**Chromatograms:** [https://cdn.origene.com/chromatograms/mk6080\\_b12.zip](https://cdn.origene.com/chromatograms/mk6080_b12.zip)

**Restriction Sites:** SgfI-MluI

**Cloning Scheme:**



**ACCN:** NM\_021254

**ORF Size:** 870 bp

**OTI Disclaimer:** The molecular sequence of this clone aligns with the gene accession number as a point of reference only. However, individual transcript sequences of the same gene can differ through naturally occurring variations (e.g. polymorphisms), each with its own valid existence. This clone is substantially in agreement with the reference, but a complete review of all prevailing variants is recommended prior to use. [More info](#)

**OTI Annotation:** This clone was engineered to express the complete ORF with an expression tag. Expression varies depending on the nature of the gene.

**Components:** The ORF clone is ion-exchange column purified and shipped in a 2D barcoded Matrix tube containing 10ug of transfection-ready, dried plasmid DNA (reconstitute with 100 ul of water).

**Reconstitution Method:**

1. Centrifuge at 5,000xg for 5min.
2. Carefully open the tube and add 100ul of sterile water to dissolve the DNA.
3. Close the tube and incubate for 10 minutes at room temperature.
4. Briefly vortex the tube and then do a quick spin (less than 5000xg) to concentrate the liquid at the bottom.
5. Store the suspended plasmid at -20°C. The DNA is stable for at least one year from date of shipping when stored at -20°C.

**RefSeq:** [NM\\_021254.4](#)

**RefSeq Size:** 1427 bp

**RefSeq ORF:** 873 bp

**Locus ID:** 56683

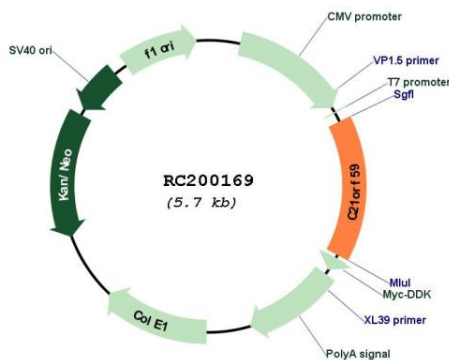
**UniProt ID:** [P57076](#)

**Cytogenetics:** 21q22.11

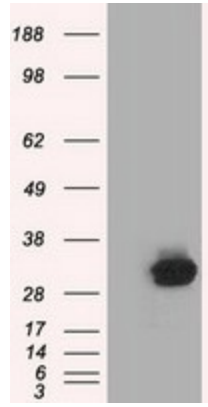
**MW:** 33.2 kDa

**Gene Summary:** This gene encodes a protein that plays a critical role in dynein arm assembly and motile cilia function. Mutations in this gene result in primary ciliary dyskinesia. Naturally occurring readthrough transcription occurs from this locus to the downstream t-complex 10 like (TCP10L) gene. [provided by RefSeq, Apr 2017]

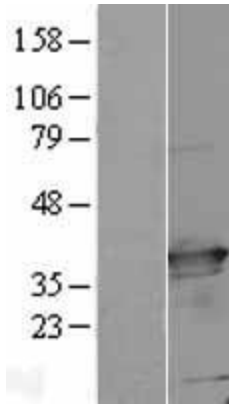
**Product images:**



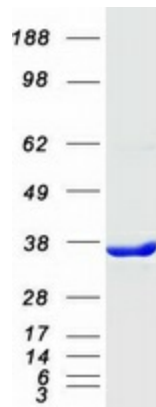
Circular map for RC200169



HEK293T cells were transfected with the pCMV6-ENTRY control (Cat# [PS100001], Left lane) or pCMV6-ENTRY C21orf59 (Cat# RC200169, Right lane) cDNA for 48 hrs and lysed. Equivalent amounts of cell lysates (5 ug per lane) were separated by SDS-PAGE and immunoblotted with anti-C21orf59(Cat# [TA501350]). Positive lysates [LY402864] (100ug) and [LC402864] (20ug) can be purchased separately from OriGene.



Western blot validation of overexpression lysate (Cat# [LY402864]) using anti-DDK antibody (Cat# [TA50011-100]). Left: Cell lysates from untransfected HEK293T cells; Right: Cell lysates from HEK293T cells transfected with RC200169 using transfection reagent MegaTran 2.0 (Cat# [TT210002]).



Coomassie blue staining of purified CFAP298 protein (Cat# [TP300169]). The protein was produced from HEK293T cells transfected with CFAP298 cDNA clone (Cat# RC200169) using MegaTran 2.0 (Cat# [TT210002]).