

Product datasheet for RC200164

C1orf56 (NM_017860) Human Tagged ORF Clone

Product data:

Product Type:	Expression Plasmids
Product Name:	C1orf56 (NM_017860) Human Tagged ORF Clone
Tag:	Myc-DDK
Symbol:	C1orf56
Synonyms:	MENT
Mammalian Cell Selection:	Neomycin
Vector:	pCMV6-Entry (PS100001)
E. coli Selection:	Kanamycin (25 ug/mL)
ORF Nucleotide Sequence:	>RC200164 ORF sequence Red=Cloning site Blue=ORF Green=Tags(s)

TTTTGTAATACGACTCACTATAGGGCGGCCGGAATTCGTCGACTGGATCCGGTACCGAGGAGATCTGCCGCCCGATCGCC

ATGGTCCCCGCCCGCGCGCTGCTGTGGTCTGCTGCTGAATCTGGGTCCCCGGGCGCGGGGCCCC
AAGGCCTGACCCAGACTCCGACCGAAATGCAGCGGGTCAGTTTACGCTTTGGGGGCCCCATGACCCGCGAG
CTACCGGAGCACCGCCCGACTGGTCTTCCCCGGAAGACAAGGATAATCCTAGAGGACGAGAATGATGCC
ATGGCCGACGCCGACCGCTGGCTGGACCAGCGGCTGCCGAGCTCTGGCCGCCACGGTGTCCACCGGCT
TTAGCCGGTCGTCGCCATTAACGAGGAGGATGGGTCTTCAAGAGAGGGGTTGTGATTAATGCCGAAA
GGATAGCACCAGCAGAGAGCTTCCAGTGCAGTCCCAATACAGCGGGGAGTTCCAGCAGGAGTTTATA
GCCAATAGTCAGGAGCCTGAAATCAGGCTGACTTCAAGCCTGCCGCGCTCCCCGGGAGGTCTACTGAGG
ACCTGCCAGGCTCGCAGGCCACCCTGAGCCAGTGGTCCACACCTGGGTCTACCCGAGCCGGTGGCCGTC
ACCCTCACCCACAGCCATGCCATCTCCTGAGGATCTGCGGCTGGTGTGATGCCCTGGGGCCCGTGGCAC
TGCCACTGCAAGTCGGGCACCATGAGCCGGAGCCGGTCTGGGAAGCTGCACGGCCTTCCGGGCGCCTTC
GAGTTGGGGCGCTGAGCCAGCTCCGCACGGAGCACAAGCCTTGCACCTATCAACAATGTCCCTGCAACCG
ACTTCGGAAGAGTGCCCTGGACACAAGTCTGTACTGACACCAACTGTGCCTCTCAGAGCACCACC
AGTACCAGGACCACCACTACCCCTTCCCACCATCCACCTCAGAAGCAGTCCCAGCCTGCCACCCGCCA
GCCCTGCCAGCCCTGGCTTTTGGAAACGGGTGAGGATGGCCTGGAGGATATTTGGAATAGCCTCTC
TTCAGTGTTACAGAGATGCAACCAATAGACAGAAACCAGAGG

ACGCGTACGCGGCCGCTCGAGCAGAACTCATCTCAGAAGAGGATCTGGCAGCAATGATATCCTGGATT
ACAAGGATGACGACGATAAGGTTTAA



[View online »](#)

Protein Sequence: >RC200164 protein sequence
Red=Cloning site Green=Tags(s)

MVPAAGALLWLLLLNLGPRAAGAQLTQTPTEMQRVSLRFGGPMTRSyrSTARTGLPRKTRIILEDENDA
MADADRLAGPAAAEALLAATVSTGFsrSSAINeedGSSEEGVVINAGKDSTsRELPSATPNTAGSSSTRFI
ANSQEPeIRLTSSLPRSPGRSTEDLPGSQATLSQWSTPGSTPSRWSPSPSTAMPSPEDLRLVLMWGPWH
CHCKSGTMSRSRSGKLHGLSGRLRVGALSQLRTEHKPCTYQQPCPNRLREECPLDTSLCDTDNCASQSTT
STRTTTTPFPTIHLRSSPSLPPASPCPALAFWKRVRIGLEDIWNLSVSTEMQPIDRNQR

TRTRPLEQKLISEEDLAANDILDYKDDDDKV

Chromatograms: https://cdn.origene.com/chromatograms/mk6149_d02.zip

Restriction Sites: SgfI-MluI

Cloning Scheme:

Cloning sites used for ORF Shuttling:



* The last codon before the Stop codon of the ORF

ACCN: NM_017860

ORF Size: 1023 bp

OTI Disclaimer: The molecular sequence of this clone aligns with the gene accession number as a point of reference only. However, individual transcript sequences of the same gene can differ through naturally occurring variations (e.g. polymorphisms), each with its own valid existence. This clone is substantially in agreement with the reference, but a complete review of all prevailing variants is recommended prior to use. [More info](#)

OTI Annotation: This clone was engineered to express the complete ORF with an expression tag. Expression varies depending on the nature of the gene.

Components: The ORF clone is ion-exchange column purified and shipped in a 2D barcoded Matrix tube containing 10ug of transfection-ready, dried plasmid DNA (reconstitute with 100 ul of water).

Reconstitution Method:

1. Centrifuge at 5,000xg for 5min.
2. Carefully open the tube and add 100ul of sterile water to dissolve the DNA.
3. Close the tube and incubate for 10 minutes at room temperature.
4. Briefly vortex the tube and then do a quick spin (less than 5000xg) to concentrate the liquid at the bottom.
5. Store the suspended plasmid at -20°C. The DNA is stable for at least one year from date of shipping when stored at -20°C.

RefSeq: [NM_017860.5](#)

RefSeq Size: 2055 bp

RefSeq ORF: 1026 bp

Locus ID: 54964

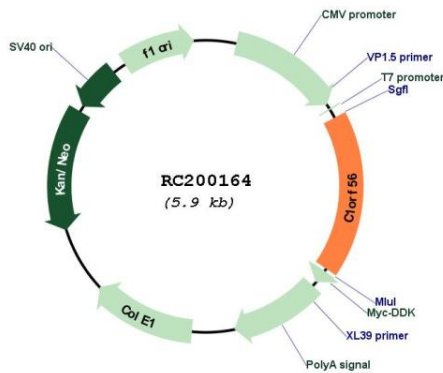
UniProt ID: [Q9BUN1](#)

Cytogenetics: 1q21.3

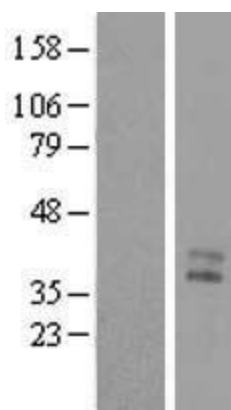
MW: 36.8 kDa

Gene Summary: This gene is a proto-oncogene whose promoter is methylated by DNA methyltransferase 3B (DNMT3B), which represses the proto-oncogene. However, a catalytically inactive isoform of DNMT3B is overexpressed in lymphomas, leading to hypomethylation of the proto-oncogene's promoter and derepression of the proto-oncogene. [provided by RefSeq, Sep 2016]

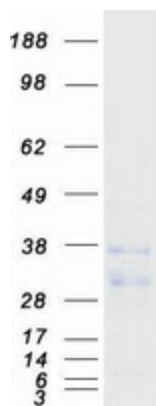
Product images:



Circular map for RC200164



Western blot validation of overexpression lysate (Cat# [LY402623]) using anti-DDK antibody (Cat# [TA50011-100]). Left: Cell lysates from untransfected HEK293T cells; Right: Cell lysates from HEK293T cells transfected with RC200164 using transfection reagent MegaTran 2.0 (Cat# [TT210002]).



Coomassie blue staining of purified C1orf56 protein (Cat# [TP300164]). The protein was produced from HEK293T cells transfected with C1orf56 cDNA clone (Cat# RC200164) using MegaTran 2.0 (Cat# [TT210002]).