

## Product datasheet for **RC200152**

### **GMEB1 (NM\_024482) Human Tagged ORF Clone**

#### **Product data:**

Product Type:	Expression Plasmids
Product Name:	GMEB1 (NM_024482) Human Tagged ORF Clone
Tag:	Myc-DDK
Symbol:	GMEB1
Synonyms:	P96PIF; PIF96
Mammalian Cell Selection:	Neomycin
Vector:	pCMV6-Entry (PS100001)
E. coli Selection:	Kanamycin (25 ug/mL)



[View online »](#)

**ORF Nucleotide Sequence:**

>RC200152 ORF sequence  
 Red=Cloning site Blue=ORF Green=Tags(s)

TTTTGTAATACGACTCACTATAGGGCGGCCGGAATTCGTCGACTGGATCCGGTACCGAGGAGATCTGCC  
 GCC**GCGATCGCC**

ATGGCTAATGCAGAAGTGAAGTGTCCAGTGGGGATGTGGTTGTGGTACCTACTGAAGGAAATGAAGGGG  
 AGAATCCTGAAGACACTAAAACCCAAGTATTTGCAGTTACAGCCTGTGCAACAAGGGATTATGAAGC  
 TGGGTCGGAGAACAACACGGCAGTTGTAGCAGTAGAACTCACACGATACACAAAATTGAAGAAGGGATT  
 GATACAGGCACTATAGAAGCAAATGAGGATATGGAAATGCTTACCCATAAATTGTGGGAGAGCAAAG  
 CCATCCTCCTCTGGAAGAAGTTTGTATGTCAGGAATAAAGTGAAGTGTGTCAAGTTCAATGATCAGTT  
 GATCAGCCCCAAGCACTTTGTTTCATCTGGCTGGCAAGTCCACTCTGAAGGACTGGAAGAGAGCTATTCTG  
 CTGGGTGGGATCATGCTCAGGAAAATGATGGACTCCGGACAGATTGATTTTTACCAACATGACAAAGTTT  
 GCTCCAATACCTGCAGAAGCACCAAATTTGATCTTCTGATCAGCAGTGAAGAGCTCCAGTGCCAGGACA  
 GCAGACAAGTGTGGTGCAGACACCCACTTCGGCTGATGGTAGCATCACGAGATTGCCATCTCAGAAGAG  
 AGCATGGAAGAGGCGAGGGCTGGAATGGAAGTCACTCTCACCGCTGCTGTACCATTGGCCACGGAGGAGG  
 GTGTAAGAAAGACTCAGAGGAAATTCAGAGGACACTTTGATGTTCTGGAAGGAATAGCTGATGTAGG  
 GCTGATGGAAGAGTTGTCTGCAATATACAGAAGGAAATAGAGGAGCTACTCAGGGGAGTTCAGCAGCGG  
 CTCATCCAGGCTCCCTTCCAAGTACAGATGCTGCTGTTCTCAACAATGTAGCACACACATTTGGCCTAA  
 TGGACACAGTCAAGAAGTTTTAGACAACAAGAAGCAAGTGAAGCAGGGAGAAGAAGCAAGTTTCTCTA  
 TACTCTGACAGACTTGGAAACCCAGTTGGAGGAGCAGAAGAAGCAAGGCCAGGATCACAGGCTGAAATCT  
 CAGACAGTTCAAATGTGGTACTGATGCCTGTGAGCACTCCTAAGCCTCCAAAAGGCCCGGCTCCAGC  
 GGCCAGCTCCACCCTGCTTGGAGCCCTCTCCTCCTGTCCAGCAGCCTCAGTTCACAGTCACTCACC  
 CATCACCATCACCCAGTGGGTCACTATTTTCCATGGGCAATATTCCAGTGGCCACCCTCAGCCAGGGC  
 TCCAGTCTGTGACTGTCCACACACTGCCTTCTGGCCCTCAGCTCTTCCGCTATGCCACAGTGGTCTCCT  
 CTGCCAAGAGCAGCTCACCAGACACAGTGACCATCCACCCTTCTAGCTTGGCGCTGCTGAGCTCTAC  
 TGCCATGCAGGATGGGAGTACACTGGGCAACATGACCACCATGGTTAGCCCTGTGGAATTTGGTGGCCATG  
 GAGTCCGGCTAACCTCGGCAATTCAGGCTGTTGAAAGCACCTCAGAGGATGGGCAGACCATCATTGAGA  
 TTGATCCAGCCCCGACCAGAAGCTGAAGATACTGAGGGCAAAGCAGTCATCTTGAGACAGAGCTGAG  
 GACTGAGGAGAAAGTTGTGGCTGAGATGGAAGAACCAGCATCAAGTTCACAATGTGGAGATTGTGGTC  
 TTAGAGGAT

**ACGCGT**ACGCGGCGGCTCGAGCAGAAACTCATCTCAGAAGAGGATCTGGCAGCAAATGATATCCTGGATT  
 ACAAGGATGACGACGATAAGGTTTAA

**Protein Sequence:**

>RC200152 protein sequence  
 Red=Cloning site Green=Tags(s)

MANAEVSVPGDVVVVPTEGNEGENPEDTKTQVILQLQPVQQGIYEAGSENNTAVVAVETHTHKIEEGI  
 DTGTIEANEDMEIAYPITCGESKAILLWKFVCPGINVKCVKFNQQLISPKHFVHLAGKSTLKDWKRAIR  
 LGGIMLRKMMDSGQIDFYQHDKVCNTRSTKFDLLISSARAPVPGQTSVVQTPTSADGSITQIAISEE  
 SMEEAGLEWNSALTAAVTMATEEGVKKDSEEISEDLMFWKGIADVGLMEEVVCNIQKEIEELLRGVQQR  
 LIQAPFQVTDAAVLNNVAHTFGLMDTVKKVLDNRRNQVEQEEQFLYTLTDLERQLEEQKKQGDHRLKS  
 QTVQNVVLMVSTPKPPKRPRLRPASTTVLSPSPVQPPQFTVISPITITPVGQSFSGMGNIPVATLSQG  
 SSPVTVHTLPSGPQLFRYATVSSAKSSSPDVTIHPSSSLALLSSTAMQDGLGNMTTMVSPVELVAM  
 ESGLTSAIQAVESTSEDGQTIIEIDPAPDPEAEDTEGKAVILELTELRTTEEKVVAEMEEHQHVHNVIEIV  
 LED

**TR**TRPLEQKLISEEDLAANDILDYKDDDDKV

**Chromatograms:**

[https://cdn.origene.com/chromatograms/mk6401\\_a06.zip](https://cdn.origene.com/chromatograms/mk6401_a06.zip)

**Restriction Sites:**

Sgfl-Mlul

**Cloning Scheme:**


**ACCN:** NM\_024482

**ORF Size:** 1689 bp

**OTI Disclaimer:** The molecular sequence of this clone aligns with the gene accession number as a point of reference only. However, individual transcript sequences of the same gene can differ through naturally occurring variations (e.g. polymorphisms), each with its own valid existence. This clone is substantially in agreement with the reference, but a complete review of all prevailing variants is recommended prior to use. [More info](#)

**OTI Annotation:** This clone was engineered to express the complete ORF with an expression tag. Expression varies depending on the nature of the gene.

**Components:** The ORF clone is ion-exchange column purified and shipped in a 2D barcoded Matrix tube containing 10ug of transfection-ready, dried plasmid DNA (reconstitute with 100 ul of water).

- Reconstitution Method:**
1. Centrifuge at 5,000xg for 5min.
  2. Carefully open the tube and add 100ul of sterile water to dissolve the DNA.
  3. Close the tube and incubate for 10 minutes at room temperature.
  4. Briefly vortex the tube and then do a quick spin (less than 5000xg) to concentrate the liquid at the bottom.
  5. Store the suspended plasmid at -20°C. The DNA is stable for at least one year from date of shipping when stored at -20°C.

**RefSeq:** [NM\\_024482.3](#)

**RefSeq Size:** 2661 bp

**RefSeq ORF:** 1692 bp

**Locus ID:** 10691

**UniProt ID:** [Q9Y692](#)

**Cytogenetics:** 1p35.3

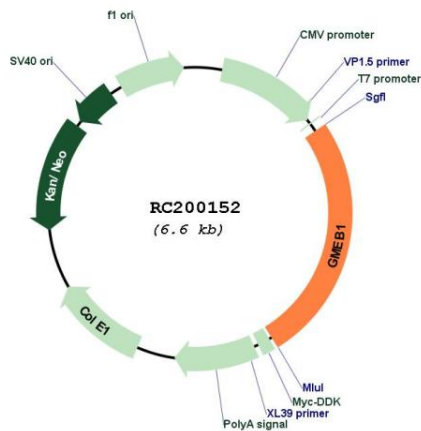
**Domains:** SAND

**Protein Families:** Druggable Genome, Transcription Factors

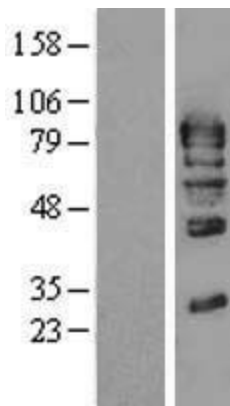
**MW:** 61.3 kDa

**Gene Summary:** This gene encodes a member of KDWK gene family which associates with GMEB2 protein. The GMEB1-GMEB2 complex is essential for parvovirus DNA replication. Studies in rat for a similar gene suggest that this gene's role is to modulate the transactivation of the glucocorticoid receptor when it is bound to glucocorticoid response elements. Three alternative spliced transcript variants encoding different isoforms exist. [provided by RefSeq, Feb 2016]

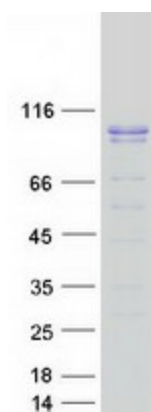
**Product images:**



Circular map for RC200152



Western blot validation of overexpression lysate (Cat# [LY411280]) using anti-DDK antibody (Cat# [TA50011-100]). Left: Cell lysates from untransfected HEK293T cells; Right: Cell lysates from HEK293T cells transfected with RC200152 using transfection reagent MegaTran 2.0 (Cat# [TT210002]).



Coomassie blue staining of purified GMEB1 protein (Cat# [TP300152]). The protein was produced from HEK293T cells transfected with GMEB1 cDNA clone (Cat# RC200152) using MegaTran 2.0 (Cat# [TT210002]).