

Product datasheet for **RC200150**

RBM10 (NM_005676) Human Tagged ORF Clone

Product data:

Product Type:	Expression Plasmids
Product Name:	RBM10 (NM_005676) Human Tagged ORF Clone
Tag:	Myc-DDK
Symbol:	RBM10
Synonyms:	DXS8237E; GPATC9; GPATCH9; S1-1; TARPS; ZRANB5
Mammalian Cell Selection:	Neomycin
Vector:	pCMV6-Entry (PS100001)
E. coli Selection:	Kanamycin (25 ug/mL)



[View online »](#)

ORF Nucleotide Sequence:

>RC200150 ORF sequence
 Red=Cloning site Blue=ORF Green=Tags(s)

TTTTGTAATACGACTCACTATAGGGCGGCCGGAATTCGTCGACTGGATCCGGTACCGAGGAGATCTGCC
 GCC**CGCATCGCC**

ATGGAGTATGAAAGACGTGGTGGTCGTGGTGACAGGACTGGCCGCTATGGAGCCACTGACCCTCGCAGG
 ATGATGGTGGGGAGAACCAGCCAGCCGAGACCAGCTACCGGACATGGACTACCGTTCATATCCTCGCGA
 GTATGGCAGCCAGGAGGGCAAGCATGACTATGACGACTCATCTGAGGAGCAGAGTGCGGAGGATTCTAC
 GAGGCCTCCCCGGGCTCCGAGACTCAGCGTAGGCGGCGGCGGCGCACAGGCACAGCCCCACCGGCCGC
 CAGGCTCCCCGAGACGGGACTATCGGGACCAGGACTATCGGACCGAGCAAGGGGAGGAGGAGGAGGA
 GGAGGAGGATGAGGAGGAGGAGAAGGCCAGTAACATCGTCATGCTGAGGATGCTGCCACAGGCAGCC
 ACTGAGGATGACATCCGTGGCCAGCTGCAGTCGCACGGCGTGCAAGCACGGGAGGTTCCGGCTGATCGGA
 ACAATCTTCAGGTGAGCCGGGGCTTCGCCTTCGTGAGTTTGTACTTGCAGGACGCTACACGATG
 GATGGAAGCCAATCAGCACTCCCTCAACATCCTGGGCCAGAAGGTGTCGATGCACTACAGTGACCCCAAG
 CCCAAGATCAATGAGGACTGGCTGTGCAATAAGTGTGGCGTCCAGAACTCAAACGCCGAGAGAAGTGT
 TCAAATGTGGCGTGCCCAAGTCAGAGGCAGAGCAGAAGCTGCCCTCGGCACGAGGCTGGATCAGCAGAC
 ACTGCCACTGGGTGGCCGGGAGCTGAGCCAGGGCTGTTCCCCTGCCGACGCCCTACCAGGCCAGGGA
 GTCCTGGCCTCCAAGCCCTGTCACAGGGCTCGGAGCCAAGCTCAGAGAACGCCAATGACACCATCATTT
 TGCGCAACCTGAACCCACACAGCACCATGGATTCCATCCTGGGGGCCCTGGCACCTACGCGGTGCTGTC
 CTCCTCCAACGTGCGCGTCATAAAGGACAAGCAGACCAACTGAACCGCGGCTTTGCCTTCATCCAGCTC
 TCCACCATCGTGGAGGCAGCCAGCTGCTGCAGATCCTGCAGGCCCTGCACCCACCCTACTATCGAGC
 GCAAGACCATCAATGTTGAGTTTGCAAGGGTTCTAAGAGGGACATGGCCTCAATGAAGCAGTCCGAG
 CAGTGTGCCTCTGTGGCCAGCACTGCCATTGCTGCGGCCAGTGGGCCATCTCACAGGCCTCCAAGGT
 GGGGAGGGTACCTGGGCCACCTCCGAGGAGCGCCGGTCTGACTACAGCTACTACCAACAGGATGAGGGCT
 ATGGCAACAGCCAGGGCACAGAGTCTTCCCTCTATGCCCATGGCTACCTCAAGGGCACCAGGGCCCTGG
 CATCACTGGAACCAAGGGGATCCCACTGGAGCAGGTCCCGAGGCCTCCCTAGAGCCTGGGGCCGACTCT
 GTGTGATGACAGGCTTTCTCTCGCGCCAGCCTGGTGTGCTCCTGGCATCTACCAACAATCAGCCGAGG
 CGAGCAGTAGCCAGGGCACTGCTGCCAACAGCCAGTCGTATACCATCATGTACCCGCTGTGCTCAAATC
 TGAGCTCCAGAGCCCTACCCATCTAGTCTGCTCTCCACCGGCTACCAGCCCCACTGCCAGGAATCC
 TACAGCCAGTACCCTGTTCCCGAGCTCTACCTACCAGTACGATGAGACCTCCGGCTACTACTATGACC
 CCCAGACCGGCTCTACTATGACCCCAACTCCCAGTATTACTACAATGCTCAGAGCCAGCAGTACCTGTA
 CTGGGATGGGGAGAGGGGACCTATGTTCCCGCCTGGAGCAGTCGGCCGACGGACATAAGGAGACAGGG
 GCACCCTCGAAGGAGGGCAAAGAGAAGAAGGAGAAGCACAAGACCAAGACAGCTCAACAGATTGCCAAGG
 ACATGGAACGCTGGGCCCGCAGTCTCAACAAACAAAAAGAAACTTCAAAAATAGCTTCCAGCCTATCAG
 CTCCCTGCGAGATGACGAGAGGGGGAGTCAGCCACTGCAGATGCTGGCTATGCCATCCTCGAGAAGAAG
 GGAGCACTAGCCGAGAGACAGCACACCAGCATGGATCTCCGAAATTGGCCAGTGACGACCGCCCAAGCC
 CTCCCGAGGACTGGTGGCAGCCTACAGCGGGGAGAGTGACAGTGAGGAGGAGCAGGAGCGTGGGGGCC
 TGAGCGGGAGGAGAAGCTCACCGACTGGCAGAAGCTGGCCTGTCTGCTCTGCCGACGCCAGTCCCAGC
 AAAGAGGCGTCAATCCGGCACCCAGCAGCTCTCAGGGCTCCACAAGCAAAACCTTGAGATTACCGGCGAG
 CCCACTTGTGAGAAAACGAGCTAGAAGCACTAGAGAAGAATGACATGGAGCAAAATGAAGTACCGGGACCG
 TGCAGCTGAACGCAGAGAAAAGTATGGCATCCCGAGCCGCCAGAGCCCAAGAGGAGGAAGTACGGCGGC
 ATATCCACAGCCTCTGTAGACTTCGAGCAGCCTACTCGGGACGGGCTGGGCAAGTACAACATTGGCAGTC
 GGATGCTGCAGGCCATGGGCTGGAAGAGGGCAGCGGCTGGGCCGAAGAAGCAGGGCATTGTAACGCC
 TATCGAGGCCAAACACGGGTGCGGGGCTCCGGCCTGGGTGCACGGGCGAGCTCTACGGGGTCACTCA
 ACCGAGTCTACAAGGAGACTGCACAAGACAATGGTGACCCGCTTCAACGAGGCCAG

ACGCGTACGCGGCCGCTCGAGCAGAACTCATCTCAGAAGAGGATCTGGCAGCAAATGATATCCTGGATT
 ACAAGGATGACGACGAT AAGGTTTAA

Protein Sequence: >RC200150 protein sequence
 Red=Cloning site Green=Tags(s)

```
MEYERRGGRDRTGRYGATDRSQDDGGENRSRDHDIRMDYRSYPREYGSQEGKHDYDSSSEEQSAEDSY
EASPGSETQRRRRRRHRHPTGPPGFPRDGYRDQDYRTEQEEEEEEEEEEEEKASNI VMLRMLPQAA
TEDDIRGQLQSHGVQAREVRLMRNKSSGQSRGF AFVEF SHLQDATRWMEANQHSLN ILGQK VSMHYSDPK
PKINEDWLCNKCGVQNFKRREKCFKCGVPKSEAEQK LPLGTRL DQQTLPLGGRELSQGLLPLPQPYQAQG
VLASQALSQGSEPSSENANDTIILRNLNPHSTMDSILGALAPYAVLSSSNVRVIKDKQTQLNRGFAFIQL
STIVEAAQLLQILQALHPPLTIDGKTINVEFAK GSKRDMASNEGSRI SAASVASTAIAAAQWAI SQA SQG
GEGT WATSEEPV DYSY YQDEGYNSQGTES SLYAHGYLKGTKGPGITG TKGDP T GAGPEASLEPGADS
VSMQAFSRAQPGAAPGIYQSAEASSSQGTAANSQSYT IMSPAVLKSELQSP THPSSALPPATSPTAQES
YSQYPVPDVSTYQYDETS GYYYPQTGL YDPNSQYYNAQSQQYL YWDGERRTYVPALEQSADGHKETG
APSKEGKEKKEKHKTKTAQQIAKDMERWARSLNKQENFKNSFQPISSLRDDRRESATADAGYAILEKK
GALAERQHTSMDLPK L ASDDRPSPPRGLVAAYS GEGSDSEEEQERGGPEREEKLTDWQKLACLLCRRQFPS
KEALIRHQQLSGLHKQNL EIHRAHLSENELEALEKNDMEQMYRDRAAERREKYGIPEPPEPKRRKYGG
ISTASVDFEQPTRDGLGSDNIGSRMLQAMGWKEGSGLGRKKQGI VTP IEAQTRVRGSGLGARGSSYGVTS
TESYKETLHKTMVTRFNEAQ
```

TRTRPLEQKLISEEDLAANDILDYKDDDDKV

Chromatograms: https://cdn.origene.com/chromatograms/mk6219_b01.zip

Restriction Sites: SgfI-MluI

Cloning Scheme:

Cloning sites used for ORF Shuttling:



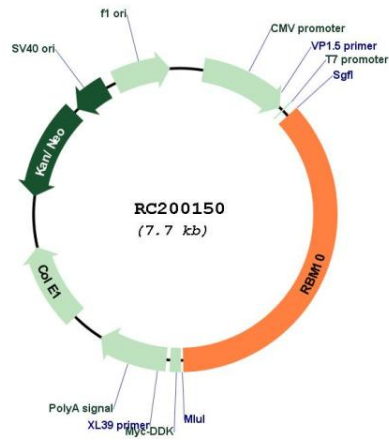
* The last codon before the Stop codon of the ORF

ACCN: NM_005676

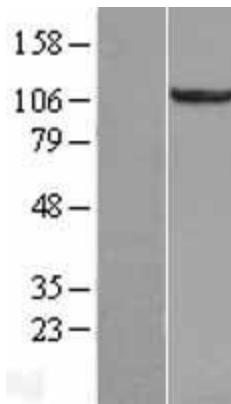
ORF Size: 2790 bp

OTI Disclaimer:	The molecular sequence of this clone aligns with the gene accession number as a point of reference only. However, individual transcript sequences of the same gene can differ through naturally occurring variations (e.g. polymorphisms), each with its own valid existence. This clone is substantially in agreement with the reference, but a complete review of all prevailing variants is recommended prior to use. More info
OTI Annotation:	This clone was engineered to express the complete ORF with an expression tag. Expression varies depending on the nature of the gene.
Components:	The ORF clone is ion-exchange column purified and shipped in a 2D barcoded Matrix tube containing 10ug of transfection-ready, dried plasmid DNA (reconstitute with 100 ul of water).
Reconstitution Method:	<ol style="list-style-type: none">1. Centrifuge at 5,000xg for 5min.2. Carefully open the tube and add 100ul of sterile water to dissolve the DNA.3. Close the tube and incubate for 10 minutes at room temperature.4. Briefly vortex the tube and then do a quick spin (less than 5000xg) to concentrate the liquid at the bottom.5. Store the suspended plasmid at -20°C. The DNA is stable for at least one year from date of shipping when stored at -20°C.
Note:	Plasmids are not sterile. For experiments where strict sterility is required, filtration with 0.22um filter is required.
RefSeq:	NM_005676.5
RefSeq Size:	3412 bp
RefSeq ORF:	2793 bp
Locus ID:	8241
UniProt ID:	P98175
Cytogenetics:	Xp11.3
Domains:	G-patch, RRM, zf-RanBP, zf-C2H2
Protein Families:	Druggable Genome
MW:	103.5 kDa
Gene Summary:	This gene encodes a nuclear protein that belongs to a family proteins that contain an RNA-binding motif. The encoded protein associates with hnRNP proteins and may be involved in regulating alternative splicing. Defects in this gene are the cause of the X-linked recessive disorder, TARP syndrome. Alternate splicing results in multiple transcript variants.[provided by RefSeq, Mar 2011]

Product images:



Circular map for RC200150



Western blot validation of overexpression lysate (Cat# [LY417145]) using anti-DDK antibody (Cat# [TA50011-100]). Left: Cell lysates from untransfected HEK293T cells; Right: Cell lysates from HEK293T cells transfected with RC200150 using transfection reagent MegaTran 2.0 (Cat# [TT210002]).