

Product datasheet for RC200147

MAEA (NM_001017405) Human Tagged ORF Clone

Product data:

Product Type:	Expression Plasmids
Product Name:	MAEA (NM_001017405) Human Tagged ORF Clone
Tag:	Myc-DDK
Symbol:	MAEA
Synonyms:	EMLP; EMP; GID9; HLC-10; P44EMLP; PIG5
Mammalian Cell Selection:	Neomycin
Vector:	pCMV6-Entry (PS100001)
E. coli Selection:	Kanamycin (25 ug/mL)
ORF Nucleotide Sequence:	>RC200147 ORF sequence Red=Cloning site Blue=ORF Green=Tags(s)

TTTTGTAATACGACTCACTATAGGGCGCCGGGAATTCGTCGACTGGATCCGGTACCGAGGAGATCTGCC
GCC**CGATCGCC**

ATGGCGGTGCAGGAGTCGGCGGCTCAGTTGTCCATGACCCTGAAGGTCCAGGAGTACCCGACCCTCAAGG
TGCCCTACGAGACGCTGAACAAACGCTTTCGCGCCGCTCAGAAGAACATTGACCGGGAGACCAGCCACGT
CACCATGGTGGTGGCCGAGCTGGAGAAGACGTTGAGCGGCTGCCCGCCGTGGACTCCGTGGTCAGCCTG
CTGGACGGCTGGTGGAGAAGCTCAGCGTCTCAAGAGGAAGCGGTGGAATCCATCCAGGCCGAGGACG
AGAGCGCCAAGCTGTGCAAGCGCCGGATCGAGCACCTCAAAGAGCATAGCAGCGACCAGCCCGCGCGGC
CAGCGTGTGGAAGAGGAAGCGCATGGATCGCATGATGGTGGAGCACCTGCTGCGTTGCGGCTACTACAAC
ACGGCTGTCAAGCTGGCGGCCAGAGCGGCATCGAGGACCTAGTGAATATTGAGATGTTCTGACGGCCA
AAGAGGTGGAGGAGTCCCTGGAGAGGCGTGAGACGGCCACCTGCCTGGCCTGGTGCCATGACAACAAGTC
CCGGCTCCGGAAGATGAAGAGCTGCCTGGAGTTGAGCCTCAGAATCCAGGAGTTCATTGAACTCATCCGG
CAGAATAAGAGACTGGACGCTGTGAGACATGCAAGAAAGCACTTCAGCCAAGCAGAAGGGAGCCAGCTGG
ACGAGGTGCGCCAGGCCATGGGCATGCTGGCCTTCCC GCCGACACGCACATCTCCCGTACAAGGACCT
TCTGGACCCTGCACGGTGGCGGATGCTGATCCAGCAGTTCCGGTACGACAACCTACCGACTACACCAGCTG
GGAAACAATTCTGTGTTCAACCCTCACCTGCAGGCCGCGCTCTCAGCCATCAAGACACCACAGTGTACA
AGGAGGACGGCAGCTCCAAGAGCCCTGACTGCCCTGTGTGACGCGCTCCCTGAACAAGCTGGCGCAGCC
CCTGCCCATGGCCACTGTGCCAACTCCCGCCTGGTCTGCAAGATTTCTGGCGACGTGATGAACGAGAAC
AATCCGCCATGATGCTGCCAACGGCTACGTCTACGGCTACAATTCTCTGCTTTCTATCCGTCAAGATG
ATAAAGTCGTGTGCCGAGAACCAAGAAGTCTTCCACTTCTCACAAGCCGAGAAGGTGTACATCATG

ACGCGTACGCGGCCGCTCGAGCAGAACTCATCTCAGAAGAGGATCTGGCAGCAATGATATCCTGGATT
ACAAGGATGACGACGATAAGGTTTAA



[View online »](#)

Protein Sequence: >RC200147 protein sequence
Red=Cloning site Green=Tags(s)

MAVQESAAQLSMTLKVQEYPTLKVPYETLNKRFRAAQKNIDRETSHVTMVVAELEKTLSGCPAVDSVVSLLDGVVVEKLSVLKRKAVESIQAEDESAKLCKRRIEHLKEHSSDQPAAASVWKRKRMDRMMVEHLLRCGYNTAVKRLARQSGIEDLVNIEMFLTAKEVEESLERRETATCLAWCHDNKSRLRKMKSCLFSLRIQEFIELIRQNKRLDAVRHARKHFSQAEGSQLDEVQRQAMGLAFPPDTHISPYKDLLDPARWRMLIQQFRYDNYRLHQLGNNSVFTLTLQAGLSAIKTPQCYKEDGSSKSPDCPVCSRSLNKL AQPLMAHCANSRLVCKISGDVMNENPPMMLPNGYVYGYNSLLSIRQDDKVVCPRTKEVFHFSQAEKVYIM

TRTRPLEQKLISEEDLAANDILDYKDDDDKV

Chromatograms: https://cdn.origene.com/chromatograms/mk6394_c11.zip

Restriction Sites: SgfI-MluI

Cloning Scheme:



* The last codon before the Stop codon of the ORF

ACCN: NM_001017405

ORF Size: 1188 bp

OTI Disclaimer: The molecular sequence of this clone aligns with the gene accession number as a point of reference only. However, individual transcript sequences of the same gene can differ through naturally occurring variations (e.g. polymorphisms), each with its own valid existence. This clone is substantially in agreement with the reference, but a complete review of all prevailing variants is recommended prior to use. [More info](#)

OTI Annotation: This clone was engineered to express the complete ORF with an expression tag. Expression varies depending on the nature of the gene.

Components: The ORF clone is ion-exchange column purified and shipped in a 2D barcoded Matrix tube containing 10ug of transfection-ready, dried plasmid DNA (reconstitute with 100 ul of water).

Reconstitution Method:

1. Centrifuge at 5,000xg for 5min.
2. Carefully open the tube and add 100ul of sterile water to dissolve the DNA.
3. Close the tube and incubate for 10 minutes at room temperature.
4. Briefly vortex the tube and then do a quick spin (less than 5000xg) to concentrate the liquid at the bottom.
5. Store the suspended plasmid at -20°C. The DNA is stable for at least one year from date of shipping when stored at -20°C.

RefSeq: [NM_001017405.3](#)

RefSeq Size: 2250 bp

RefSeq ORF: 1191 bp

Locus ID: 10296

UniProt ID: [Q7L5Y9](#)

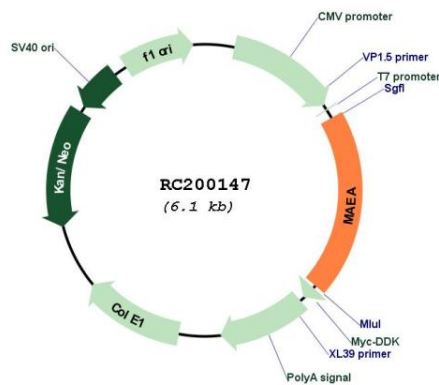
Cytogenetics: 4p16.3

Protein Families: Druggable Genome

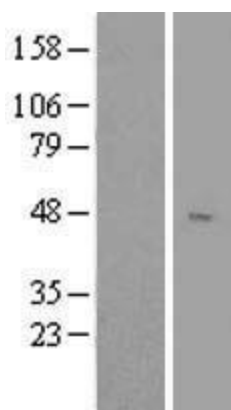
MW: 45.3 kDa

Gene Summary: This gene encodes a protein that mediates the attachment of erythroblasts to macrophages. This attachment promotes terminal maturation and enucleation of erythroblasts, presumably by suppressing apoptosis. The encoded protein is an integral membrane protein with the N-terminus on the extracellular side and the C-terminus on the cytoplasmic side of the cell. Alternative splicing results in multiple transcript variants. [provided by RefSeq, Jul 2014]

Product images:



Circular map for RC200147



Western blot validation of overexpression lysate (Cat# [LY422781]) using anti-DDK antibody (Cat# [TA50011-100]). Left: Cell lysates from untransfected HEK293T cells; Right: Cell lysates from HEK293T cells transfected with RC200147 using transfection reagent MegaTran 2.0 (Cat# [TT210002]).