

## Product datasheet for **RC200144**

### NSUN5 (NM\_148956) Human Tagged ORF Clone

#### Product data:

Product Type:	Expression Plasmids
Product Name:	NSUN5 (NM_148956) Human Tagged ORF Clone
Tag:	Myc-DDK
Symbol:	NSUN5
Synonyms:	NOL1; NOL1R; NSUN5A; p120; p120(NOL1); WBSCR20; WBSCR20A
Mammalian Cell Selection:	Neomycin
Vector:	pCMV6-Entry (PS100001)
E. coli Selection:	Kanamycin (25 ug/mL)



[View online »](#)

**ORF Nucleotide Sequence:**

>RC200144 ORF sequence  
 Red=Cloning site Blue=ORF Green=Tags(s)

TTTTGTAATACGACTCACTATAGGGCGGCCGGAATTCGTCGACTGGATCCGGTACCGAGGAGATCTGCC  
 GCC**CGATCGCC**

ATGGGGCTGTATGCTGCAGCTGCAGGCGTGTGGCCGGCTGGAGAGCCGCCAGGGCTCTATCAAGGGGT  
 TGGTGTACTCCAGCAACTTCCAGAACGTGAAGCAGCTGTACGCGCTGGTGTGCGAAACGCAGCGCTACTC  
 CGCCGTGCTGGATGCTGTGATCGCCAGCGCCGGCTCCTCCGTGCGGAGAAGAAGCTGCGCCGCACCTG  
 GCCAAGGTGCTAGTGTATGAGTTGTTGGGAAAGGGCTTTCGAGGGGGTGGGGCCGATGGAAGGCTC  
 TGGTGGGCGGCACCAGGCGAGGCTCAAGGCTGAGTTGGCTCGGCTCAAGGTTTCATCGGGGTGTGAGCCG  
 GAATGAGGACCTGTTGGAAGTGGGATCCAGGCCTGGTCCAGCCTCCAGCTGCCTCGATTGTGCGTGTG  
 AACACTCTCAAGACCTGCTCCGATGATGATGTTGATTATTTCAAGAGACAAGGTTTCTCCTATCAGGGTC  
 GGGCTTCCAGCCTCGATGACTTACGAGCCCTCAAGGGGAAGCATTTTCTCCTGGACCCCTTGATGCCGA  
 GCTGCTGGTGTTCGCGCCAGACAGATCTGCATGAACACCCACTGTACCGGGCCGACACCTCATTCTG  
 CAGGACAGGGCCAGCTGTCTCCAGCCATGCTGCTGGACCCCGCCAGGCTCCCATGTCATCGATGCTT  
 GTGCCGCCAGGCAATAAGACCAGTCACTTGGCTGCTTCTGAAGAACCAAGGGAAGATCTTTCGCTT  
 TGACCTGGATGCCAAGCGGCTGGCATCCATGGCCACGCTGCTGGCCCGGGCTGGCGTCTCTTGTGTGAA  
 CTGGCTGAGGAGGACTTCTGGCGGTCTCCCCCTCGGATCCACGCTACCATGAGGTCCACTACATCCTGC  
 TGGATCCTTCTCGAGTGGCTCGGGTATGCCGAGCAGACAGCTGGAGGAGCCCGGGCAGGCACACCTAG  
 CCCGGTGGCTCGATGCCCTGGCAGGGTTCAGCAGCGAGCCCTGTGCCACGCACTCACTTCCCTTCC  
 CTGCAGCGGCTCGTCTACTCCACGTGCTCCCTTGCCAGGAGGAGAATGAAGACGTGGTGCAGATGCGC  
 TGCAGCAGAACC CGGGCGCTTCCAGGCTAGCTCCCGCCCTGCCTGCCTGGCCCCACCGAGGCTGAGCAC  
 GTTCCCGGGTGGCGAGCACTGCCTCCGGGCTCCCTGAGACCACACTCAGCAGTGGCTTCTTCGTTGCT  
 GTAATTGAACGGGTGAGGTGCCAAGCTCAGCCTCACAGGCCAAAGCATCAGCACCAGAACGCACACCCA  
 GCCAGCCCCAAAGAGAAAGAAGAGACAGCAAAGAGCCGAGCCGGTGTGTCACACCGCCTTGACA

**ACGCGT**ACGCGGCCGCTCGAGCAGAACTCATCTCAGAAGAGGATCTGGCAGCAAATGATATCCTGGATT  
 ACAAGGATGACGACGATAAGGTTTAA

**Protein Sequence:**

>RC200144 protein sequence  
 Red=Cloning site Green=Tags(s)

MGLYAAAAGVLAGVESRQGSIKGLVYSSNFQNVKQLYALVCETQRYSAVLDAVIASAGLLRAEKKLRPHL  
 AKVLVYELLLGKFRGGGRWKALLGRHQARLKAELARLKVHRGVSARNEDLLEVGSRPGPASQLPRFVVRV  
 NTLKTCSDVDVDFYKQGF SYQGRASSLDDL RALKGKHFLLDPLMPELLVFPAQTDLHEHPLYRAGHLIL  
 QDRASCLPAMLLDPPPGSHVIDACAAPGNKTSHLAALLKNQKIFAFDLDAKRLASMATLLARAGVSCCE  
 LAEEDFLAVSPDPRYHEVHYILLDPSCSGSGMPSRQLEEPGAGTSPVRLHALAGFQQRALCHALTFPS  
 LQRLVYSTCSLQEEENEDVVRDALQQNPGAFRLAPALPAWPHRGLSTFPGAHEHLRASPETTLSSGFFVA  
 VIERVEVPSSASQAKASAPERTPSPAPKRKRQQRAAAGACTPPCT

**TR**TRPLEQKLISEEDLAANDILDYKDDDDKV

**Chromatograms:**

[https://cdn.origene.com/chromatograms/mk6151\\_d03.zip](https://cdn.origene.com/chromatograms/mk6151_d03.zip)

**Restriction Sites:**

Sgfl-Mlul

**Cloning Scheme:**


**ACCN:** NM\_148956

**ORF Size:** 1398 bp

**OTI Disclaimer:** The molecular sequence of this clone aligns with the gene accession number as a point of reference only. However, individual transcript sequences of the same gene can differ through naturally occurring variations (e.g. polymorphisms), each with its own valid existence. This clone is substantially in agreement with the reference, but a complete review of all prevailing variants is recommended prior to use. [More info](#)

**OTI Annotation:** This clone was engineered to express the complete ORF with an expression tag. Expression varies depending on the nature of the gene.

**Components:** The ORF clone is ion-exchange column purified and shipped in a 2D barcoded Matrix tube containing 10ug of transfection-ready, dried plasmid DNA (reconstitute with 100 ul of water).

- Reconstitution Method:**
1. Centrifuge at 5,000xg for 5min.
  2. Carefully open the tube and add 100ul of sterile water to dissolve the DNA.
  3. Close the tube and incubate for 10 minutes at room temperature.
  4. Briefly vortex the tube and then do a quick spin (less than 5000xg) to concentrate the liquid at the bottom.
  5. Store the suspended plasmid at -20°C. The DNA is stable for at least one year from date of shipping when stored at -20°C.

**RefSeq:** [NM\\_148956.4](#)

**RefSeq Size:** 2377 bp

**RefSeq ORF:** 1401 bp

**Locus ID:** 55695

**UniProt ID:** [Q96P11](#)

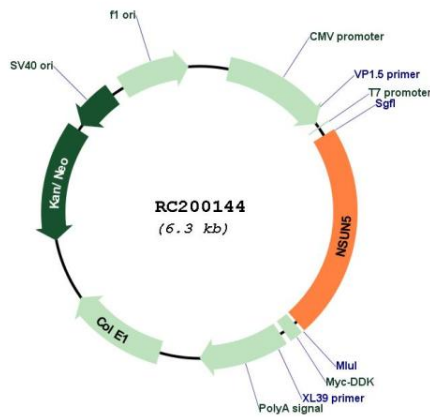
**Cytogenetics:** 7q11.23

**Domains:** N01\_Nop2\_Sun

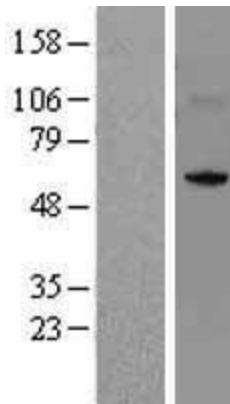
**MW:** 50.4 kDa

**Gene Summary:** This gene encodes a member of an evolutionarily conserved family of proteins that may function as methyltransferases. This gene is located in a larger region of chromosome 7 that is deleted in Williams-Beuren syndrome, a multisystem developmental disorder. There are two pseudogenes for this gene located in the same region of chromosome 7. Alternative splicing results in multiple transcript variants encoding different isoforms. [provided by RefSeq, Jul 2013]

**Product images:**



Circular map for RC200144



Western blot validation of overexpression lysate (Cat# [LY403452]) using anti-DDK antibody (Cat# [TA50011-100]). Left: Cell lysates from untransfected HEK293T cells; Right: Cell lysates from HEK293T cells transfected with RC200144 using transfection reagent MegaTran 2.0 (Cat# [TT210002]).