

Product datasheet for **RC200139**

ENTR1 (NM_006643) Human Tagged ORF Clone

Product data:

Product Type:	Expression Plasmids
Product Name:	ENTR1 (NM_006643) Human Tagged ORF Clone
Tag:	Myc-DDK
Symbol:	ENTR1
Synonyms:	NY-CO-3; SDCCAG3; SDDAG3
Mammalian Cell Selection:	Neomycin
Vector:	pCMV6-Entry (PS100001)
E. coli Selection:	Kanamycin (25 ug/mL)
ORF Nucleotide Sequence:	>RC200139 ORF sequence Red=Cloning site Blue=ORF Green=Tags(s)

TTTTGTAATACGACTCACTATAGGGCGGCCGGAATTCGTCGACTGGATCCGGTACCGAGGAGATCTGCC
GCC**CGATCGCC**

ATGTCGGGCTACCAGCGCCACCCGGGCGCCACCCCGTGTCCCGAGCCGGAGCCTCGCCATTCGCCAGC
CTCCAGCGTTCTATGAGCGCCGGTCTTGCTCCCCAGCTAAATTGTGAGCGCCCCATGGCAGGGACCT
GGACTCCCCCTTCTTCGGCATTCCGGCCGGCCTTTATGTGCTATGTGCCAGCCGGTGTGGCTCCGTG
GGAGACACAGATGACAGATTTGAAGATCTGGAAGAGGCAAATCCATTCTCTTTTAGAGAGTTTCTGAAGA
CCAAGAACCTCGGCCTCTCGAAAGAGGATCCGGCCAGCAGAATTTATGCAAAGGAAGCCTCGAGGCATTC
CCTGGGACTTGACCACAACTCCCCACCCTCCAAACCGGCGGGTATGGCCTGGAGTATCAGCAGCCATTT
TTCGAGGATCCGACAGGGGCTGGTGACCTCCTGGATGGGGAGGAGGATGAGGACACCGGATGGAGTGGGG
CCTACCTGCCGTCCGCCATCGAGCAGACTCACCCGAGAGGGTCCCTGCCGGCAGCTCGCCCTGCAGCAC
ATACCTTTCTTTTTCTCCACCCCGTCCGAGCTGGCAGGGCTGAGTCTCTGCCCTCGTGGGCGTTGAGT
GACACTGATTCTCGCGTGTCTCCGGCCTCTCCGGCAGGGAGTCTAGCGCAGACTTTGCGGTTTATGGAG
AGTCTCTGGGAGACAGGCACCTGCGGACGCTGCAGATAAGTTACGACGCACTGAAAGATGAAAATCTAA
GCTGAGAAGAAAGCTGAATGAGGTTTCAGAGCTTCTCTGAAGCTCAAACAGAAATGGTGAGGACGCTTGAG
CGGAAGTTAGAAGCAAAAATGATCAAGGAGGAAAGCGACTACCAGCAGCTGGAGTCGGTGGTTTCAGCAGG
TGGAGCAGAACCCTGGAGCTGATGACCAAACGGGCTGTAAGGCAGAAAACCCAGTCTGTAACATAAAACA
GGAAATCAGTTTCTCCAGGCGCAGGTCTCCAACCTCCAGCGAGAGAATGAAGCCCTGCGGTGCGGCCAG
GGGCCAGCCTGACCGTGGTGAAGCAGAACGCCGACGTGGCCCTGCAGAACCTCCGGGTGGTTCATGAACA
GTGCACAGGCTTCCATCAAGCAACTGGTTTCCGGAGCTGAGACACTGAATCTTGTGCCGAAATCCTTAA
ATCTATAGACAGAATTTCTGAAATTAAGACGAGGAGGAAGACTCT

ACGCGTACGCGGCCGCTCGAGCAGAAACTCATCTCAGAAGAGGATCTGGCAGCAAATGATATCCTGGATT
ACAAGGATGACGACGATAAGGTTTAA



[View online >](#)

Protein Sequence: >RC200139 protein sequence
Red=Cloning site Green=Tags(s)

MSGYQRHPGATPLSRARSLAIPDAPAFYERRSCLPQLNCERPHGRDLSPFFGIRPAFMCYVPSVLASV
 GDTDDRFEDLEEANPFSFREFLKTKNLGLSKEDPASRIYAKEASRHSLGLDHNSPPSQTGGYGLYQPPF
 FEDPTGAGDLLDGEEDDTGWSGAYLPSAIEQTHPERVPAGTSPCSTYLSFFSTPSELAGPESLPSWALS
 DTDSRVSPASPAGSPADFAVHGESLGDRHLRTLQISYDALKDENSKLRRKLNEVQSFSEAQTEMVRTLE
 RKLEAKMIKEESDYHDLESVVQQVEQNLELMTKRAVKAENHVVKLKQEISLLQAQVSNFQRENEALRCGQ
 GASLTVVKQNADVALQNLRVVMNSAQASIKQLVSGAETLNLVAEILKSIDRISEIKDEEEDS

TRTRPLEQKLISEEDLAANDILDYKDDDDKV

Chromatograms: https://cdn.origene.com/chromatograms/mk6153_a10.zip

Restriction Sites: SgfI-MluI

Cloning Scheme:



* The last codon before the Stop codon of the ORF

ACCN: NM_006643

ORF Size: 1236 bp

OTI Disclaimer: The molecular sequence of this clone aligns with the gene accession number as a point of reference only. However, individual transcript sequences of the same gene can differ through naturally occurring variations (e.g. polymorphisms), each with its own valid existence. This clone is substantially in agreement with the reference, but a complete review of all prevailing variants is recommended prior to use. [More info](#)

OTI Annotation: This clone was engineered to express the complete ORF with an expression tag. Expression varies depending on the nature of the gene.

Components: The ORF clone is ion-exchange column purified and shipped in a 2D barcoded Matrix tube containing 10ug of transfection-ready, dried plasmid DNA (reconstitute with 100 ul of water).

- Reconstitution Method:**
1. Centrifuge at 5,000xg for 5min.
 2. Carefully open the tube and add 100ul of sterile water to dissolve the DNA.
 3. Close the tube and incubate for 10 minutes at room temperature.
 4. Briefly vortex the tube and then do a quick spin (less than 5000xg) to concentrate the liquid at the bottom.
 5. Store the suspended plasmid at -20°C. The DNA is stable for at least one year from date of shipping when stored at -20°C.

RefSeq: [NM_006643.3](#), [NP_006634.3](#)

RefSeq Size: 2321 bp

RefSeq ORF: 1239 bp

Locus ID: 10807

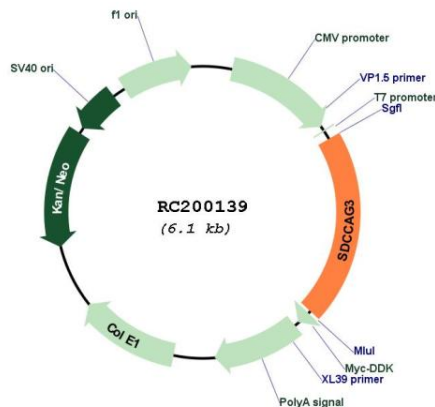
UniProt ID: [Q96C92](#)

Cytogenetics: 9q34.3

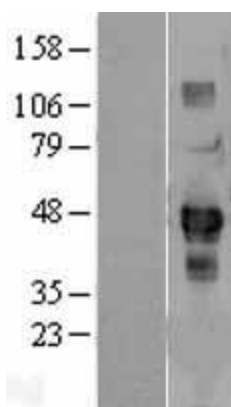
MW: 45.5 kDa

Gene Summary: Endosome-associated protein that plays a role in membrane receptor sorting, cytokinesis and ciliogenesis (PubMed:23108400, PubMed:25278552, PubMed:27767179). Involved in the endosome-to-plasma membrane trafficking and recycling of SNX27-retromer-dependent cargo proteins, such as GLUT1 (PubMed:25278552). Involved in the regulation of cytokinesis; the function may involve PTPN13 and GIT1 (PubMed:23108400). Plays a role in the formation of cilia (PubMed:27767179). Involved in cargo protein localization, such as PKD2, at primary cilia (PubMed:27767179). Involved in the presentation of the tumor necrosis factor (TNF) receptor TNFRSF1A on the cell surface, and hence in the modulation of the TNF-induced apoptosis (By similarity).[UniProtKB/Swiss-Prot Function]

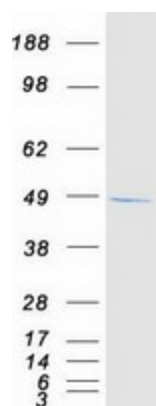
Product images:



Circular map for RC200139



Western blot validation of overexpression lysate (Cat# [LY402000]) using anti-DDK antibody (Cat# [TA50011-100]). Left: Cell lysates from untransfected HEK293T cells; Right: Cell lysates from HEK293T cells transfected with RC200139 using transfection reagent MegaTran 2.0 (Cat# [TT210002]).



Coomassie blue staining of purified ENTR1 protein (Cat# [TP300139]). The protein was produced from HEK293T cells transfected with ENTR1 cDNA clone (Cat# RC200139) using MegaTran 2.0 (Cat# [TT210002]).