

Product datasheet for RC200135

ARMC1 (NM_018120) Human Tagged ORF Clone

Product data:

Product Type:	Expression Plasmids
Product Name:	ARMC1 (NM_018120) Human Tagged ORF Clone
Tag:	Myc-DDK
Symbol:	ARMC1
Synonyms:	Arcp
Mammalian Cell Selection:	Neomycin
Vector:	pCMV6-Entry (PS100001)
E. coli Selection:	Kanamycin (25 ug/mL)
ORF Nucleotide Sequence:	>RC200135 ORF sequence Red=Cloning site Blue=ORF Green=Tags(s)

TTTTGTAATACGACTCACTATAGGGCGCCGGGAATTCGTCGACTGGATCCGGTACCGAGGAGATCTGCC
GCC**CGATCGCC**

ATGAATCTTCCACTTCCACCATGAGTGAAGAGCCTGACGCTCTATCGGTAGTTAACCAGTTACGGGATC
TAGCAGCAGATCCGTTAAACAGAAGAGCCATCGTCCAGGATCAGGGATGTCTGCCTGGCCTATTTTATT
TATGGACCATCCAACCTCCAGTCGTCCACTCCGCTTTGCTTTCGATACTTGGCAGAATGCCGT
GCAAACAGAGAAAAGATGAAAGGAGAACTGGGTATGATGTTGAGCTTACAAAATGTTATACAGAAAATA
CAACTCCAGGAGAAAACAACTTCTGGCCTCTGAAATCTATGACATTCTCAGTCTCCAATATGGCAGA
TGGTGATAGTTTTAATGAGATGAATTCAGTCCGAAAGAAAGCTCAATTTTTCTGGGAACTACAAACAAA
CGTGCCAAAACAGTGGTTTTGCATATAGATGGCCTTGATGATACGCTCCGAGAAAATCTATGTGAAGAGG
CTTTGTTAAAAATTAAGGTGTTATTAGCTTTACTTTTCAAATGGCTGTTCAAAGGTGTGTGGTGCGAAT
CCGTTCCAGATTTGAAAGCTGAGGCTTTGGCATCAGCAATAGCATCAACCAAGGTTATGAAAGCTCAGCAA
GTTGTGAAAAGTAAAAGTGGAGAAGAGATGTTGGTCCCATTCCAAGATACTCCTGTGGAAGTTGAACAGA
ACACAGAGCTACCTGACTACCTGCCTGAGGATGAGAGTCCCACAAAGGAACAGGACAAAGCGGTGTCCCG
GGTCGGCTCACACCCAGAAGGTGGAGCTAGCTGGCTTAGCACAGCTGCAAACCTTTTTATCCAGATCATT
TATTGG

ACGCGTACGCGGCCGCTCGAGCAGAAACTCATCTCAGAAGAGGATCTGGCAGCAAATGATATCCTGGATT
ACAAGGATGACGACGATAAGGTTTAA



[View online »](#)

Reconstitution Method:

1. Centrifuge at 5,000xg for 5min.
2. Carefully open the tube and add 100ul of sterile water to dissolve the DNA.
3. Close the tube and incubate for 10 minutes at room temperature.
4. Briefly vortex the tube and then do a quick spin (less than 5000xg) to concentrate the liquid at the bottom.
5. Store the suspended plasmid at -20°C. The DNA is stable for at least one year from date of shipping when stored at -20°C.

RefSeq: [NM_018120.6](#)

RefSeq Size: 3051 bp

RefSeq ORF: 849 bp

Locus ID: 55156

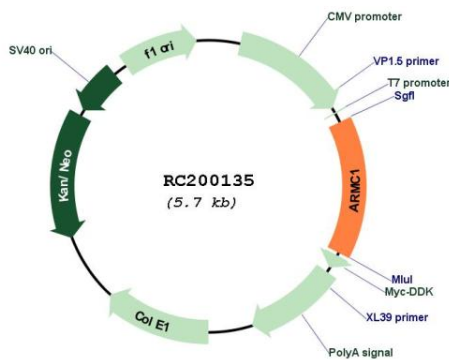
UniProt ID: [Q9NVT9](#)

Cytogenetics: 8q13.1

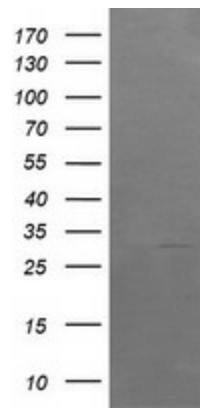
MW: 31.3 kDa

Gene Summary: In association with mitochondrial contact site and cristae organizing system (MICOS) complex components and mitochondrial outer membrane sorting assembly machinery (SAM) complex components may regulate mitochondrial dynamics playing a role in determining mitochondrial length, distribution and motility.[UniProtKB/Swiss-Prot Function]

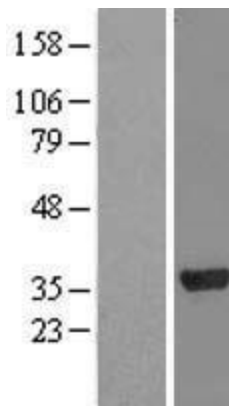
Product images:



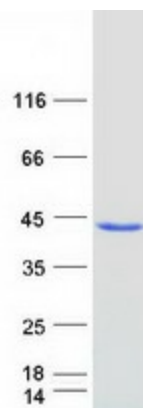
Circular map for RC200135



HEK293T cells were transfected with the pCMV6-ENTRY control (Cat# [PS100001], Left lane) or pCMV6-ENTRY ARMC1 (Cat# RC200135, Right lane) cDNA for 48 hrs and lysed. Equivalent amounts of cell lysates (5 ug per lane) were separated by SDS-PAGE and immunoblotted with anti-ARMC1 (Cat# [TA505405]). Positive lysates [LY413306] (100ug) and [LC413306] (20ug) can be purchased separately from OriGene.



Western blot validation of overexpression lysate (Cat# [LY413306]) using anti-DDK antibody (Cat# [TA50011-100]). Left: Cell lysates from untransfected HEK293T cells; Right: Cell lysates from HEK293T cells transfected with RC200135 using transfection reagent MegaTran 2.0 (Cat# [TT210002]).



Coomassie blue staining of purified ARMC1 protein (Cat# [TP300135]). The protein was produced from HEK293T cells transfected with ARMC1 cDNA clone (Cat# RC200135) using MegaTran 2.0 (Cat# [TT210002]).