

Product datasheet for **RC200126**

TRIM62 (NM_018207) Human Tagged ORF Clone

Product data:

Product Type:	Expression Plasmids
Product Name:	TRIM62 (NM_018207) Human Tagged ORF Clone
Tag:	Myc-DDK
Symbol:	TRIM62
Synonyms:	DEAR1
Mammalian Cell Selection:	Neomycin
Vector:	pCMV6-Entry (PS100001)
E. coli Selection:	Kanamycin (25 ug/mL)



[View online »](#)

ORF Nucleotide Sequence:

>RC200126 ORF sequence
 Red=Cloning site Blue=ORF Green=Tags(s)

TTTTGTAATACGACTCACTATAGGGCGGCCGGAATTCGTCGACTGGATCCGGTACCGAGGAGATCTGCC
 GCC**GCGATCGCC**

ATGGCGTGCAGCCTCAAGGACGAGCTGCTGTGCTCCATCTGCCTGAGCATCTACCAGGACCCGGTGAGCC
 TGGGCTGCGAGCACTACTTCTGCCGCCGCTGCATCACGGAGCACTGGGTGCGGCAGGAGCGCAGGGCGC
 CCGCGACTGCCCGAGTGCCGGCGCACGTTTCGCCGAGCCCGCGCTGGCGCCAGCCTCAAGCTGGCCAAC
 ATCGTGGAGCGCTACAGCTCCTTCCCGCTGGACGCCATCCTCAACGCGCGCCGCGCCGCGGACCTGCC
 AGGCGCACGACAAGTCAAGCTCTTCTGCCTCACGGACCGCGCTTCTCTGCTTCTTCTGCGACGAGCC
 TGCCTGCACGAGCAGCATCAGGTACCCGGCATCGACGACGCTTCGACGAGCTGCAGAGGGAGCTGAAG
 GACCAACTTCAGGCCCTCAAGACAGCGAGCGGGAACACACCGAAGCGCTGCAGCTGCTCAAGCGACAAC
 TGGCGGAGACCAAGTCTCCACCAAGAGCTGCGGACCACTATCGGCGAGGCCTTCGAGCGGCTGCACCG
 GCTGCTGCGTGAACGCCAGAAGGCCATGCTAGAGGAGCTGGAGGGGACACGGCCCGCACGCTGACCGAC
 ATCGAGCAGAAAATCCAGCGCTACAGCCAGCAGCTGCGCAAGGTCAGGAGGGAGCCAGATCCTGCAGG
 AGCGGCTGGTGAACCGACCGGCACACCTTCTGGTGGGTGGCTCACTGTCCGAGCGGCTCAAGGG
 AAAATCCATGAGACCAACCTCACATATGAAGACTTCCGACCTCCAAGTACACAGGCCCCCTGCAGTAC
 ACCATCTGGAAGTCCCTGTTCCAGGACATCCACCCAGTGCAGCCGCCCTAACCTGGACCCGGGCACAG
 CCCACAGCGCTGATCTGTGCGGACGACTGCACATTGTGGCTTACGGCAACTGCACCCACAGCCACT
 GCAGGACTCGCCAAAGCGCTTCGATGTGGAGGTGTCGGTGTGGTCTGAAGCCTTCAGTAGTGGCGTC
 CACTACTGGGAGTGGTGGTGGCGGAGAAGACCCAGTGGGTGATCGGGCTGGCACACGAAGCCGCAAGCC
 GCAAGGGCAGCATCCAGATCCAGCCAGCCGCGCTTCTACTGCATCGTATGCAGATGGCAACCCAGTA
 CAGCGCCTGCACGGAGCCCTGGACGCGGCTTAACGTCCGGGACAAGCTTGACAAGGTGGGTGCTTCTCTG
 GACTATGACCAAGGCTTGTCTATCTTCTACAATGCTGATGACATGTCTGGCTCTACACCTTCCGCGAGA
 AGTTCCCTGGCAAGCTCTGCTCTACTTTCAGCCCTGGCCAGAGCCACGCCAATGGCAAGAAGCTTCAGCC
 GCTGCGGATCAACACCGTCCGCATC

ACGCGTACGCGGCCGCTCGAGCAGAACTCATCTCAGAAGAGGATCTGGCAGCAAATGATATCCTGGATT
 ACAAGGATGACGACGATAAGGTTTAA

Protein Sequence:

>RC200126 protein sequence
 Red=Cloning site Green=Tags(s)

MACSLKDELLCSICLSIYQDPVSLGCEHYFCRRRCITEHWVRQEAQGARDCEPCRRTFAEPALAPSLKLAN
 IVERYSSFPLDAILNARRAARPCQAHDKVKLFCLTDRALLCFFCDEPALHEQHQTGIDDAFDELQRELK
 DQLQALQDSEREHTEALQLLKRQLAETKSSTKSLRTTIGEAFLERLHRLLRERQKAMLEEADTARTLTD
 IEQKVQRYSQLRKVQEGAQILQERLAETDRHTFLAGVASLSERLKGIHETNLTYEDFPTSKYTGPLQY
 TIWKSFLQDIHPVPAALTLDPGTAHQRLILSDDCTIVAYGNLHPQPLQDSPKRFDVEVSLGSEAFSSGV
 HYWEVVVAEKTQWVIGLAHEAASRKGSIQPSRGFYCIVMHDGNQYSACTEPWTRLNVRDKLKVGVFL
 DYDQGLLIFYNADMSWLYTFREKFPGLKCSYFSPGQSHANGKNVQPLRINTVRI

TRTRPLEQKLISEEDLAANDILDYKDDDDKV

Chromatograms:

https://cdn.origene.com/chromatograms/mk6398_g11.zip

Restriction Sites:

Sgfl-Mlul

Cloning Scheme:


ACCN: NM_018207

ORF Size: 1425 bp

OTI Disclaimer: The molecular sequence of this clone aligns with the gene accession number as a point of reference only. However, individual transcript sequences of the same gene can differ through naturally occurring variations (e.g. polymorphisms), each with its own valid existence. This clone is substantially in agreement with the reference, but a complete review of all prevailing variants is recommended prior to use. [More info](#)

OTI Annotation: This clone was engineered to express the complete ORF with an expression tag. Expression varies depending on the nature of the gene.

Components: The ORF clone is ion-exchange column purified and shipped in a 2D barcoded Matrix tube containing 10ug of transfection-ready, dried plasmid DNA (reconstitute with 100 ul of water).

- Reconstitution Method:**
1. Centrifuge at 5,000xg for 5min.
 2. Carefully open the tube and add 100ul of sterile water to dissolve the DNA.
 3. Close the tube and incubate for 10 minutes at room temperature.
 4. Briefly vortex the tube and then do a quick spin (less than 5000xg) to concentrate the liquid at the bottom.
 5. Store the suspended plasmid at -20°C. The DNA is stable for at least one year from date of shipping when stored at -20°C.

Note: Plasmids are not sterile. For experiments where strict sterility is required, filtration with 0.22um filter is required.

RefSeq: [NM_018207.3](#)

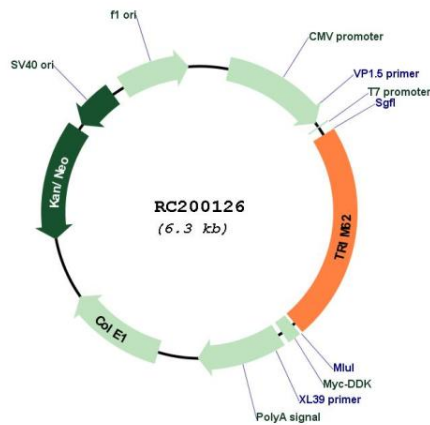
RefSeq Size: 3865 bp

RefSeq ORF: 1428 bp

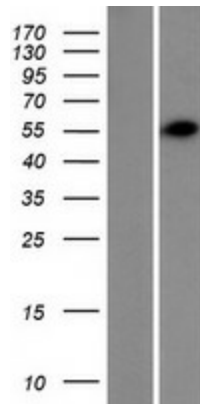
Locus ID: 55223

UniProt ID: [Q9BVG3](#)
Cytogenetics: 1p35.1
Domains: zf-B_box, RING, SPRY, PRY
Protein Families: Druggable Genome
MW: 54.3 kDa
Gene Summary: E3 ubiquitin ligase whose activity is dependent on E2 ubiquitin-conjugating enzyme UBE2D2. [UniProtKB/Swiss-Prot Function]

Product images:



Circular map for RC200126



Western blot validation of overexpression lysate (Cat# [LY413216]) using anti-DDK antibody (Cat# [TA50011-100]). Left: Cell lysates from untransfected HEK293T cells; Right: Cell lysates from HEK293T cells transfected with RC200126 using transfection reagent MegaTran 2.0 (Cat# [TT210002]).