

Product datasheet for **RC200125**

Lano (LRRC1) (NM_018214) Human Tagged ORF Clone

Product data:

Product Type:	Expression Plasmids
Product Name:	Lano (LRRC1) (NM_018214) Human Tagged ORF Clone
Tag:	Myc-DDK
Symbol:	Lano
Synonyms:	dj523E19.1; LANO
Mammalian Cell Selection:	Neomycin
Vector:	pCMV6-Entry (PS100001)
E. coli Selection:	Kanamycin (25 ug/mL)



[View online »](#)

ORF Nucleotide Sequence:

>RC200125 ORF sequence
 Red=Cloning site Blue=ORF Green=Tags(s)

TTTTGTAATACGACTCACTATAGGGCGGCCGGAATTCGTCGACTGGATCCGGTACCGAGGAGATCTGCC
 GCC**CGCATCGCC**

ATGTTCCACTGCATCCCCTGTGGCGGTGCAACCGTCATGTGGAGAGCATCGACAAGCGCCACTGCTCGC
 TGGTCTACGTCCCGAGGAGATCTACCGCTATGCCCGGAGCCTGGAGGAGCTGCTGCTGGACGCCAACCA
 GCTCCGCGAGCTGCCCGAGCAATTTTTCCAGCTAGTCAAATTACGAAAAGCTTGGACTTAGTGATAATGAA
 ATTCAGCGGCTCCCTCCAGAAATAGCAAATTCATGCAGCTGGTGGAACTAGATGTGTCTCGAAATGAGA
 TTCCTGAAATCCAGAAAGCATTTCATTCTGTAAGCACTGCAGGTAGCTGACTTCAGCGGAAACCCACT
 GACTAGGTTGCCAGAAAGCTTTCCTGAATTACAGAATTTAACATGTCTTTCTGTAATGACATCTCACTA
 CAGTCTCTACCTGAAAAATTGGCAATCTTTATAACCTGGCTTCACTGGAAGTGGAGAGAATCTTCTTA
 CATATCTTCTGACTCTTTACCGAGCTCGAAGACTAGAAGAACTTGATTTAGGAAACAATGAAATATA
 TAATTTGCCAGAATCAATTGGAGCCCTTTACATCTAAAAGATCTCTGGTTGGATGGAAATCAACTGTCA
 GAATTACCTCAGGAAATAGGAAATCTGAAGAACCTGCTGTGTTTAGATGTCTCTGAAAACAGGTTGGAAA
 GACTTCCTGAAGAAATCAGTGGCCTGACTTCATTAACGGATTTAGTCATTTCCGAGAACTTATTAGAAAC
 GATTCCGGATGGCATTGGAAAATAAAGAACTGTCAATCTTGAAGGTGGATCAGAAATAGACTCACACAG
 TTGCTGAAGCAGTTGGGGAATGTGAAAGTCTCACTGAGTTAGTTCTTACAGAAAATCAGCTCCTGACCC
 TGCTAAAAGCATTGGAAAATAAAGAAGTTGAGCAACTTGAATGCAGACAGAAATAAATTAGTGTCTT
 ACCAAAAGAGATCGGCGGGTGTGCAGCCTCACTGTGTTCTGTGTACGTGACAACAGACTAACTCGGATA
 CCTGCAGAGGTGTACAGGCAACAGAATTCATGTCTGGATGTGGCAGGGAACAGGTTGCTGCATCTAC
 CTTTATCCCTGACTGCCTTGAAGTTGAAGGCTCTGTGGCTATCTGACAACCACTCCAGCCCTGCTTAC
 ATTCCAGACAGACAGACTACACCACAGGAGAGAAGATTTTAACTGTGTCTTACTTCCCTCAGCTGCCT
 TCTGAACCTACTTGTCAAGAGAATCTGCCTCGCTGTGGTGCCTGGAGAATTTGGTAAATGATGTCTCTG
 ATGAAGCCTGGAACGAGCGTGTGTCAACAGAGTCACTGCGATCCGATTTGTGGAGGATGAGAAAGATGA
 AGAAGACAATGAGACGAGAACACTTCTAAGGCGAGCCACTCCACACCCAGGGGAGTTAAAGCACATGAAA
 AAGACAGTGGAGAATTTACGGAATGACATGAATGCTGCTAAAGGACTGGACTCAAACAAAAACGAGGTCA
 ATCATGCCATTGACCGAGTGACCACTTCTGTG

ACGCGTACGCGGCCGCTCGAGCAGAAACTCATCTCAGAAGAGGATCTGGCAGCAAATGATATCTGGATT
 ACAAGGATGACGACGATAAGGTTTAA

Protein Sequence:

>RC200125 protein sequence
 Red=Cloning site Green=Tags(s)

MFHCIPLWRCNRHVESIDKRHCSLVYVPEEIIYRYARSLEELLDDANQLRELPEQFFQLVKLRKLGKLDNE
 IQRLPPEIANFMQLVELDVSRNEIPEIPESISFCKALQVADFSGNPLTRLPEFPELQNL TCLSVNDISL
 QSLPENIGNLYNLASLELRENLLTYLPDSLTLRRLLEELDLGNNEIYNLPESIGALLHLKDLWLDGNQLS
 ELPQEIGNLKNLLCLDVSENRLERLPEEISGLTSLTDLVLSQNLLETIPDGIGLKKLSILKVDQNRLTQ
 LPEAVGECESELVLTENQLLTLPKSIGLKKLSNLNADRNLVSLPKEIGGCCSLTVFCVRDNRLTRI
 PAEVSQATELHVLDVAGNRLHLPLSLTALKLKWLDNQSQPLLTFQTDYTTGEKILTCVLLPQLP
 SEPTCQENLPRCGALENLVNDVSDEAWNERAVNRVSAIRFVEDEKDEEDNETRLLRRATPHPGELKHKM
 KTVENLRNDMNAAKGLDSNKNEVNHAIDRVTTSV

TRTRPLEQKLISEEDLAANDILDYKDDDDKV

Chromatograms:

https://cdn.origene.com/chromatograms/mk6583_c06.zip

Restriction Sites:

SgfI-MluI

Cloning Scheme:



ACCN: NM_018214

ORF Size: 1572 bp

OTI Disclaimer: Due to the inherent nature of this plasmid, standard methods to replicate additional amounts of DNA in E. coli are highly likely to result in mutations and/or rearrangements. Therefore, OriGene does not guarantee the capability to replicate this plasmid DNA. Additional amounts of DNA can be purchased from OriGene with batch-specific, full-sequence verification at a reduced cost. Please contact our customer care team at custsupport@origene.com or by calling 301.340.3188 option 3 for pricing and delivery.

The molecular sequence of this clone aligns with the gene accession number as a point of reference only. However, individual transcript sequences of the same gene can differ through naturally occurring variations (e.g. polymorphisms), each with its own valid existence. This clone is substantially in agreement with the reference, but a complete review of all prevailing variants is recommended prior to use. [More info](#)

OTI Annotation: This clone was engineered to express the complete ORF with an expression tag. Expression varies depending on the nature of the gene.

Components: The ORF clone is ion-exchange column purified and shipped in a 2D barcoded Matrix tube containing 10ug of transfection-ready, dried plasmid DNA (reconstitute with 100 ul of water).

- Reconstitution Method:
1. Centrifuge at 5,000xg for 5min.
 2. Carefully open the tube and add 100ul of sterile water to dissolve the DNA.
 3. Close the tube and incubate for 10 minutes at room temperature.
 4. Briefly vortex the tube and then do a quick spin (less than 5000xg) to concentrate the liquid at the bottom.
 5. Store the suspended plasmid at -20°C. The DNA is stable for at least one year from date of shipping when stored at -20°C.

Note: Plasmids are not sterile. For experiments where strict sterility is required, filtration with 0.22um filter is required.

RefSeq: [NM_018214.5](#)

RefSeq Size: 3180 bp

RefSeq ORF: 1575 bp

Locus ID: 55227

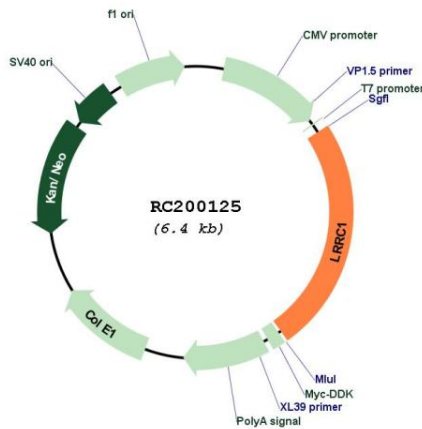
UniProt ID: [Q9BTT6](#)

Cytogenetics: 6p12.1

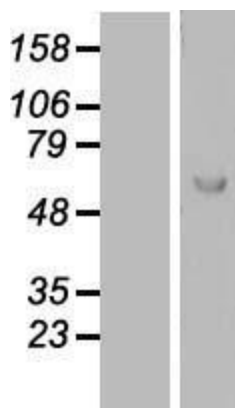
Domains: LRR, LRR_TYP, LRR_PS

MW: 59.2 kDa

Product images:



Circular map for RC200125



Western blot validation of overexpression lysate (Cat# [LY413222]) using anti-DDK antibody (Cat# [TA50011-100]). Left: Cell lysates from untransfected HEK293T cells; Right: Cell lysates from HEK293T cells transfected with RC200125 using transfection reagent MegaTran 2.0 (Cat# [TT210002]).