

Product datasheet for **RC200124**

C20orf31 (EDEM2) (NM_018217) Human Tagged ORF Clone

Product data:

Product Type:	Expression Plasmids
Product Name:	C20orf31 (EDEM2) (NM_018217) Human Tagged ORF Clone
Tag:	Myc-DDK
Symbol:	C20orf31
Synonyms:	bA4204.1; C20orf31; C20orf49
Mammalian Cell Selection:	Neomycin
Vector:	pCMV6-Entry (PS100001)
E. coli Selection:	Kanamycin (25 ug/mL)



[View online »](#)

ORF Nucleotide Sequence:

>RC200124 ORF sequence
 Red=Cloning site Blue=ORF Green=Tags(s)

TTTTGTAATACGACTCACTATAGGGCGGCCGGAATTCGTCGACTGGATCCGGTACCGAGGAGATCTGCC
 GCC**CGGATCGCC**

ATGCCTTCCGGCTGCTCATCCCCTCGCCTCCTGTGCGCGCTGCTGCCTCAGCACCATGGTGCGCCAG
 GTCCCGACGGCTCCGCGCCAGATCCCGCCACTACAGGGAGCGAGTCAAGGCCATGTTCTACCACGCCTA
 CGACAGCTACCTGGAGAATGCCTTCCCTTCGATGAGCTGCGACCTCTCACCTGTGACGGGCACGACACC
 TGGGGCAGTTTTCTCTGACTCTAATTGATGCACTGGACACCTTGTGATTTGGGGAATGTCTCAGAAT
 TCCAAAGAGTGGTTGAAGTGTCCAGGACAGCGTGGACTTTGATATTGATGTGAACGCCTCTGTGTTTGA
 AACAAACATTCGAGTGGTAGGAGGACTCCTGTCTGCTCATCTGCTCTCCAAGAAGGCTGGGGTGGAAAGTA
 GAGGCTGGATGGCCCTGTCCGGCCCTCCTGAGAATGGCTGAGGAGGCGGCCGAAAACCTCTCCAG
 CCTTTCAGACCCCACTGGCATGCCATATGGAACAGTGAACCTTACTTCATGGCGTGAACCCAGGAGAGAC
 CCCTGTACCTGTACGGCAGGATTGGGACCTTATTGTTGAATTTGCCACCCTGAGCAGCCTCACTGGT
 GACCCGGTGTTCGAAGATGTGGCCAGAGTGGCTTTGATGCGCCTCTGGGAGAGCCGGTCAGATATCGGGC
 TGGTCGGCAACCACATTGATGTGCTCACTGGCAAGTGGGTGGCCAGGACGACAGGCATCGGGGCTGGCGT
 GGACTCCTACTTTGAGTACTTGGTAAAAGGAGCCATCCTGCTTACAGGATAAGAAGCTCATGGCCATGTTT
 CTAGAGTATAACAAAGCCATCCGGAACACACCCGCTTCGATGACTGGTACCTGTGGGTTTTCAGATGTACA
 AGGGGACTGTGTCCATGCCAGTCTTCCAGTCTTGGAGGCTACTGGCCTGGTCTTCAGAGCCTCATTGG
 AGACATTGACAAATGCCATGAGGACCTTCTCAACTACTACTGTATGGAAGCAGTTTGGGGGCTCCCG
 GAATTCACAACATTCCTCAGGGATACACAGTGGAGAAGCGAGAGGGCTACCCACTTCGGCCAGAACTTA
 TTGAAAGCGCAATGTACCTCTACCGTGCCACGGGGATCCACCCTCTAGAAGTGGGAGAGATGCTGT
 GGAATCCATTGAAAAATCAGCAAGGTGGAGTGGGATTGCAACAATCAAAGATCTGCGAGACCAAG
 CTGGACAACCGCATGGAGTCGTTCTTCTGGCCGAGACTGTGAAATACCTCTACCTCCTGTTTGACCCAA
 CCAACTTCATCCACAACATGGGTCCACCTTCGACACGGTATCACCCCTATGGGGAGTGCATCCTGGG
 GGCTGGGGGTACATCTTCAACACAGAAGCTCACCCCATCGACCTGCCGCCCTGCACTGCTGCCAGAGG
 CTGAAGGAAGAGCAGTGGGAGGTGGAGGACTTGATGAGGGAATCTACTCTCAAACGGAGCAGGTGGA
 AATTTAGAAAAACACTGTTAGTTCGGGGCCATGGGAACCTCCAGCAAGGCCAGGAACACTCTTCTCACC
 AGAAAACCATGACCAGGCAAGGGAGAGGAAGCCTGCCAAACAGAAGGTCCCACTTCTCAGCTGCCCCAGT
 CAGCCCTCACCTCCAAGTTGGCATTACTGGGACAGGTTTTCTAGACTCCTCA

ACGCGTACGCGGCCGCTCGAGCAGAAACTCATCTCAGAAGAGGATCTGGCAGCAAATGATATCCTGGATT
 ACAAGGATGACGACGATAAGGTTTAA

Protein Sequence:

>RC200124 protein sequence
 Red=Cloning site Green=Tags(s)

MPFRLLIPLGLLCALLPQHGGAPGPDGAPDPAHYRERVKAMFYHAYDSYLENAFPFDELRLPTCDGHDT
 WGSFSLTLIDALDTHLLILGNVSEFQRVVEVLQDSVDFDIDVNASVFETNIRVVGILLSAHLLSKKAGVEV
 EAGWPCSGPLLRMAEEAARKLLPAFQTPGMPYGTVNLHGVNPGETPVCTAGIGTFIVEFATLSSLTG
 DPVFEVARVALMRLWESRSDIGLVGNHIDVLTKWVAQDAGIGAGVDSYFEYLKGAILLQDKLMAMF
 LEYNKAIARNYTRFDDWYLWVQMYKGTVMPPVQSLQSLIGDIDNAMRTFLNYYTVWKQFGGLP
 EFYNIPQGYTVEKREGYPLRPELIESAMYLYRATGDPTLLELGRDAVESIEKISKVECGFATIKDLRDHK
 LDNRMESFFLAETVKYLYLLFDPTNF IHNNGSTFDVTIPYGEICILGAGGYIFNTEAHPIDPAALHCCQR
 LKEEQWEVEDLMREFYSLKRSRKFQKNTVSSGPWEPPARPGLTFSPENHDQARERKPAKQKVPPLLSCPS
 QPFTSKLALLGQVFLDSS

TRTRPLEQKLISEEDLAANDILDYKDDDDKV

Chromatograms:

https://cdn.origene.com/chromatograms/mk6199_d04.zip

Restriction Sites:

Sgfl-Mlul

Cloning Scheme:


ACCN: NM_018217

ORF Size: 1734 bp

OTI Disclaimer: The molecular sequence of this clone aligns with the gene accession number as a point of reference only. However, individual transcript sequences of the same gene can differ through naturally occurring variations (e.g. polymorphisms), each with its own valid existence. This clone is substantially in agreement with the reference, but a complete review of all prevailing variants is recommended prior to use. [More info](#)

OTI Annotation: This clone was engineered to express the complete ORF with an expression tag. Expression varies depending on the nature of the gene.

Components: The ORF clone is ion-exchange column purified and shipped in a 2D barcoded Matrix tube containing 10ug of transfection-ready, dried plasmid DNA (reconstitute with 100 ul of water).

- Reconstitution Method:**
1. Centrifuge at 5,000xg for 5min.
 2. Carefully open the tube and add 100ul of sterile water to dissolve the DNA.
 3. Close the tube and incubate for 10 minutes at room temperature.
 4. Briefly vortex the tube and then do a quick spin (less than 5000xg) to concentrate the liquid at the bottom.
 5. Store the suspended plasmid at -20°C. The DNA is stable for at least one year from date of shipping when stored at -20°C.

RefSeq: [NM_018217.3](#)

RefSeq Size: 1918 bp

RefSeq ORF: 1737 bp

Locus ID: 55741

UniProt ID: [Q9BV94](#)

Cytogenetics: 20q11.22

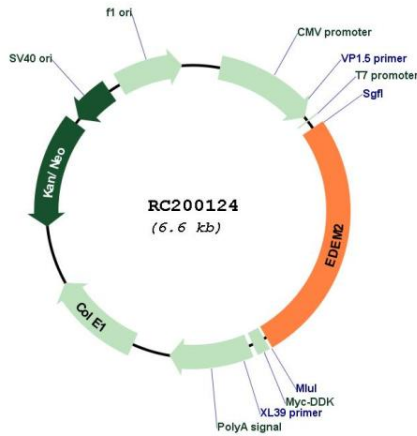
Domains: Glyco_hydro_47

Protein Families: Secreted Protein

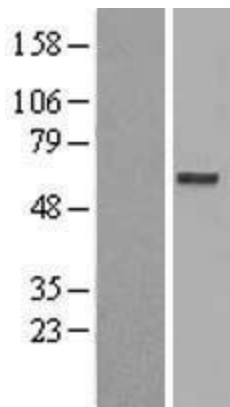
MW: 64.8 kDa

Gene Summary: In the endoplasmic reticulum (ER), misfolded proteins are retrotranslocated to the cytosol and degraded by the proteasome in a process known as ER-associated degradation (ERAD). EDEM2 belongs to a family of proteins involved in ERAD of glycoproteins (Mast et al., 2005 [PubMed 15537790]).[supplied by OMIM, Mar 2008]

Product images:



Circular map for RC200124



Western blot validation of overexpression lysate (Cat# [LY402658]) using anti-DDK antibody (Cat# [TA50011-100]). Left: Cell lysates from untransfected HEK293T cells; Right: Cell lysates from HEK293T cells transfected with RC200124 using transfection reagent MegaTran 2.0 (Cat# [TT210002]).