

Product datasheet for **RC200122**

SLC38A7 (NM_018231) Human Tagged ORF Clone

Product data:

Product Type:	Expression Plasmids
Product Name:	SLC38A7 (NM_018231) Human Tagged ORF Clone
Tag:	Myc-DDK
Symbol:	SLC38A7
Synonyms:	SNAT7
Mammalian Cell Selection:	Neomycin
Vector:	pCMV6-Entry (PS100001)
E. coli Selection:	Kanamycin (25 ug/mL)



[View online »](#)

ORF Nucleotide Sequence:

>RC200122 ORF sequence
 Red=Cloning site Blue=ORF Green=Tags(s)

TTTTGTAATACGACTCACTATAGGGCGGCCGGAATTCGTCGACTGGATCCGGTACCGAGGAGATCTGCC
 GCC**CGGATCGCC**

ATGGCCCAGGTCAGCATCAACAATGACTACAGCGAGTGGGACTTGAGCACGGATGCCGGGAGCGGGCTC
 GGCTGCTGCAGAGTCCCTGTGTGGACACAGCCCCAAGAGTGAGTGGGAAGCCTCTCCTGGGGTCTGGA
 CAGAGGCACCACTTCCACACTTGGGGCCATCTTCATCGTCGTC AACGCGTGCCTGGGTGCAGGGTACTC
 AACTTCCCAGCAGCCTTCACTGCGGGGGCGTGGCAGCAGGCATCGCACTGCAGATGGGTATGCTGG
 TTTTCATCATCAGTGGCCTTGTTCATCCTGGCCTACTGCTCCAGGCCAGCAATGAGAGGACCTACCAGGA
 GGTGGTATGGGCTGTGTGGCAAGCTGACAGGTGTGCTATGTGAGGTGGCCATCGCTGTCTACACCTTT
 GGCACCTGCATTGCCTTCTAATCATCATTGGCGACCAGCAGGACAAGATTATAGCTGTGATGGCGAAAG
 AGCCGGAGGGGGCAGCGGCCCTTGGTACACAGACCGCAAGTTCACCATCAGCCTCACTGCCTTCTCTT
 CATCCTGCCCTCTCCATCCCCAGGGAGATTGGTTTCCAGAAATATGCCAGCTTCTGAGCGTCGTGGGT
 ACCTGGTACGTACAGCCATCGTTATCATCAAGTACATCTGGCCAGATAAAGAGATGACCCAGGGAACA
 TCCTGACCAGGCCGGCTTCTGGATGGCTGTGTTCAATGCCATGCCACCATCTGCTTGGATTTAGTG
 CCACGTACAGAGTGTGCCGTCTTCAACAGCATGCAGCAGCCTGAAGTGAAGACCTGGGGTGGAGTGGTG
 ACAGCTGCCATGGTCATAGCCCTCGCTGTCTACATGGGGACAGGCATCTGTGGCTTCTGACCTTTGGAG
 CTGCTGTGGATCTGACGTGCTCCTGTCTATCCCTCGGAGGACATGGCCGTGGCCGTGGCCGAGCCTT
 CATCATCTGAGCGTGTCACTCCTACCTATCCTGCACTTCTGTGGCGGGCGGTGGTGAAGGCCTG
 TGGCTGCGCTACCAGGGGTGCCAGTGGAGGAGACGTGGGGCGGAGCGCGCGGCGGAGTGTGCAGA
 CGCTGGTCTGGTCTCCTGCTCACCTGCTGCTGGCGCTTTCATCCCTGACATCGCAAGTGATCTCAGT
 CATTGGAGGCCTGGCCGCTGCTTTCATCTTCGCTTCCAGGGCTGTGCCTCATTCAAGCCAAACTCTCT
 GAGATGGAAGAGGTCAAACCAGCCAGCTGGTGGGTGCTGGTCAGTACGGAGTCTCTTGGTCACCTGG
 GAGCCTTCATCTTCGGCCAGACCACAGCCAACGCCATCTTGTGGATCTTGGCA

AG**CGGACCG**ACGCGTACGCGGCCGCTCGAGCAGAAACTCATCTCAGAAGAGGATCTGGCAGCAAATGATATCC
 TGGATTACAAGGATGACGACGATAAGGTTAA

Protein Sequence:

>RC200122 protein sequence
 Red=Cloning site Green=Tags(s)

MAQVSINNDYSEWDLSTDAGERARLLQSPCVDTAPKSEWEASPGGLDRGTTSTLGAIFIVNACLGAGLL
 NFPAAFSTAGGVAAGIALQMGMLVFIISGLVILAYCSQASNERTYQEVVWAVCGKLTGVLCEVAIAVYTF
 GTCIAFLIIIGDQDKIIAVMAKEPEGASGPWYDRKFTISLTAFLFILPLSIPREIGFQKYASFLSVVG
 TWYVTAIVIIKIYIWPDKEMTPGNILTRPASWMAVFNAMPTICFGFQCHVSSVPVFNMQPQEVKWTGGVV
 TAAMVIALAVYMGITGICGFLTFGAAVDPVLLSYPSSEDMAVAVARAFIILSVLTSYPILHFCGRAVVEGL
 WLRVYQGVPEEDVGRERRRRVLQTLVWFLLTLLALFIPDIGKVISVIGGLAACFIFVFPGLCLIQAKLS
 EMEEVKPASWWLVSYGVLLVTLGAFIFGQTTANAIFVDLLA

SGPTRTRPLEQKLI SEEDLAANDILDYKDDDDKV

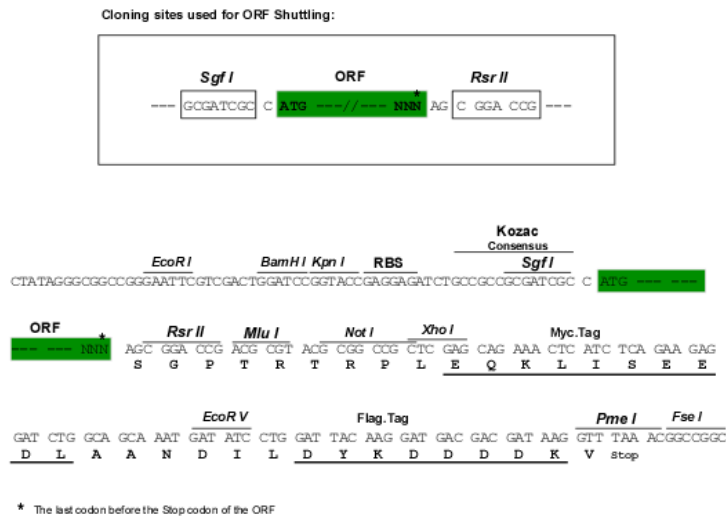
Chromatograms:

https://cdn.origene.com/chromatograms/mk6618_a04.zip

Restriction Sites:

Sgfl-RsrII

Cloning Scheme:



ACCN: NM_018231

ORF Size: 1386 bp

OTI Disclaimer: The molecular sequence of this clone aligns with the gene accession number as a point of reference only. However, individual transcript sequences of the same gene can differ through naturally occurring variations (e.g. polymorphisms), each with its own valid existence. This clone is substantially in agreement with the reference, but a complete review of all prevailing variants is recommended prior to use. [More info](#)

OTI Annotation: This clone was engineered to express the complete ORF with an expression tag. Expression varies depending on the nature of the gene.

Components: The ORF clone is ion-exchange column purified and shipped in a 2D barcoded Matrix tube containing 10ug of transfection-ready, dried plasmid DNA (reconstitute with 100 ul of water).

Reconstitution Method:

1. Centrifuge at 5,000xg for 5min.
2. Carefully open the tube and add 100ul of sterile water to dissolve the DNA.
3. Close the tube and incubate for 10 minutes at room temperature.
4. Briefly vortex the tube and then do a quick spin (less than 5000xg) to concentrate the liquid at the bottom.
5. Store the suspended plasmid at -20°C. The DNA is stable for at least one year from date of shipping when stored at -20°C.

RefSeq: [NM_018231.3](#)

RefSeq Size: 2773 bp

RefSeq ORF: 1389 bp

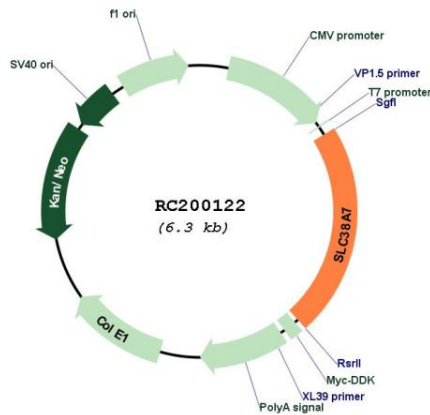
Locus ID: 55238

UniProt ID: [Q9NVC3](#)

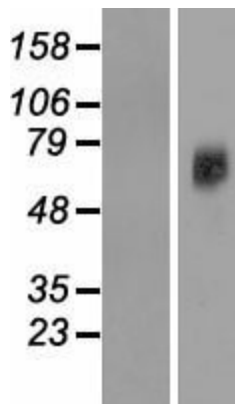
Cytogenetics: 16q21

Domains: Aa_trans
Protein Families: Transmembrane
MW: 50 kDa
Gene Summary: Mediates sodium-dependent transport of amino acids, preferentially L-glutamine. [UniProtKB/Swiss-Prot Function]

Product images:



Circular map for RC200122



Western blot validation of overexpression lysate (Cat# [LY413211]) using anti-DDK antibody (Cat# [TA50011-100]). Left: Cell lysates from untransfected HEK293T cells; Right: Cell lysates from HEK293T cells transfected with RC200122 using transfection reagent MegaTran 2.0 (Cat# [TT210002]).