

Product datasheet for **RC200116**

KLHDC2 (NM_014315) Human Tagged ORF Clone

Product data:

Product Type:	Expression Plasmids
Product Name:	KLHDC2 (NM_014315) Human Tagged ORF Clone
Tag:	Myc-DDK
Symbol:	KLHDC2
Synonyms:	HCLP-1; HCLP1; LCP
Mammalian Cell Selection:	Neomycin
Vector:	pCMV6-Entry (PS100001)
E. coli Selection:	Kanamycin (25 ug/mL)
ORF Nucleotide Sequence:	>RC200116 ORF sequence Red=Cloning site Blue=ORF Green=Tags(s)

TTTTGTAATACGACTCACTATAGGGCGGCCGGAATTCGTCGACTGGATCCGGTACCGAGGAGATCTGCC
GCC**CGATCGCC**

ATGGCTGATGGCAACGAGGATCTGCGGGCTGACGACTTGCCCTGGGCCAGCCTTCGAGAGCTATGAGTCCA
TGGAGCTTGCCCGCTGAGCGCAGCGCCACGTAGCCGTCAGCGACGGCGCCACATGTTCTGCTG
GGGCGGTACAAGAGTAATCAAGTCAGAGGATTATGACTTTTATCGCCTAGAGAAGAACTATGGATC
TACAACATGGAGACTGGAAGATGAAAAAATCAACACTGAAGGTGATGTTCTCCTTCTATGTCAGGAA
GCTGTGCTGTGTGTAGACAGGTGCTGACTTGTGGAGGACACCATTCAAGAGGCAATACCAATAA
GTTCTACATGCTGGATCAAGGTCTACAGACAGAGTGTTACAGTGGGAAAGAATTGATTGCCAAGGAATT
CCTCCATCATCAAAGGACAACTTGGTGTCTGGGTATATAAAAAAAGTTAATATTTTTGGAGGGTATG
GATATTTGCTGAAGATAAAGTATTGGAACTTTTGAATTCGATGAAACATCTTTTTGGAATTCAGTCA
TCCAAGAGGATGGAATGATCATGTACATATTTTAGACTGAAACATTTACCTGGAGCCAGCCTATAACT
ACTGGTAAAGCACCTTACCTCGTGTGCCCATGCCTGTGCAACTGTGGAAATAGAGGCTTCGTGTTT
GAGGCAGATATCGAGATGCTAGAATGAATGATCTTCACTATCTTAATCTGGATACATGGGAGTGAATGA
ATTAATCCACAAGGCATATGCCAGTTGGTCGATCTTGGCACTCACTAACACCAGTTTCTCAGATCAT
CTTTTTCTTTTGGAGGATTTACCACTGATAAACAGCCACTAAGTGATGCCTGGACTTACTGCATCAGTA
AAAATGAATGGATACAATTTAATCATCCATATACCGAAAAACCAAGTTATGGCACACAGCTTGTGCCAG
CGATGAAGGAGAAGTAATTGTTTTGGTGGATGTGCCAACAACTTGTCTTCCATCACAGAGCTGCACAC
AGTAATGAAATACTAATATTTTCAGTTCAACAAAATCTTGTACGGCTAAGCTTAGAAGCAGTCATTT
GCTTTAAAGAAATGTTAGCCAACCTATGGAAGTGCCTTCCAAAACACTTACTTCACAGTGTAAATCAGAG
GTTTGGTAGTACAACACTTCTGGATCT

ACGCGTACGCGGCCGCTCGAGCAGAACTCATCTCAGAAGAGGATCTGGCAGCAAATGATATCTGGATT
ACAAGGATGACGACGATAAGGTTTAA



[View online >](#)

Protein Sequence: >RC200116 protein sequence
Red=Cloning site Green=Tags(s)

MADGNEDLRADDLPGPAFESYESMELACPAERSGHVAVSDGRHMFVWGGYKSNQVRGLYDFYLPREELWI
 YNMETGRWKKINTEGDVPPSMSGSCAVCVDRVLYLFGGHHSRGNTNKFYMLDSRSTDRVLQWERIDCQGI
 PPSSKDKLGVVVYKKNLIFFGGYLPEDKVLGTFEFDTSFWNSSHPRGWNHDVHILDTEFTTWSQPIT
 TGKAPSPRAAHACATVGNRGFVFGGRYRDARMNDLHYLNLDTEWENELIPQGICPVGRSWHSLTPVSSDH
 LFLFGGFTTDKQPLSDAWTYCISKNEWIQFNHPYTEKPRLWHTACASDEGEVIVFGGCANNLLVHHRAAH
 SNEILIFSVQPKSLVRLSLEAVICFKEMLANSWNCLPKHLLHSVNQRFGSNNTSGS

TRTRPLEQKLISEEDLAANDILDYKDDDDKV

Chromatograms: https://cdn.origene.com/chromatograms/mk6150_a09.zip

Restriction Sites: SgfI-MluI

Cloning Scheme:



ACCN: NM_014315

ORF Size: 1218 bp

OTI Disclaimer: The molecular sequence of this clone aligns with the gene accession number as a point of reference only. However, individual transcript sequences of the same gene can differ through naturally occurring variations (e.g. polymorphisms), each with its own valid existence. This clone is substantially in agreement with the reference, but a complete review of all prevailing variants is recommended prior to use. [More info](#)

OTI Annotation: This clone was engineered to express the complete ORF with an expression tag. Expression varies depending on the nature of the gene.

Components: The ORF clone is ion-exchange column purified and shipped in a 2D barcoded Matrix tube containing 10ug of transfection-ready, dried plasmid DNA (reconstitute with 100 ul of water).

Reconstitution Method:

1. Centrifuge at 5,000xg for 5min.
2. Carefully open the tube and add 100ul of sterile water to dissolve the DNA.
3. Close the tube and incubate for 10 minutes at room temperature.
4. Briefly vortex the tube and then do a quick spin (less than 5000xg) to concentrate the liquid at the bottom.
5. Store the suspended plasmid at -20°C. The DNA is stable for at least one year from date of shipping when stored at -20°C.

RefSeq: [NM_014315.3](#)

RefSeq Size: 1808 bp

RefSeq ORF: 1221 bp

Locus ID: 23588

UniProt ID: [Q9Y2U9](#)

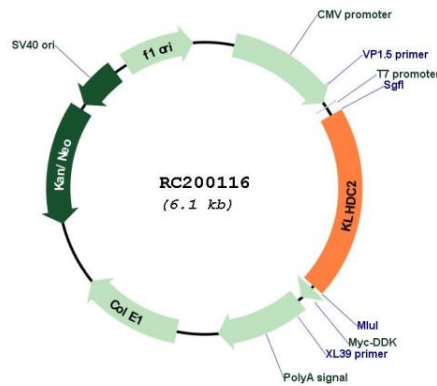
Cytogenetics: 14q21.3

Domains: Kelch

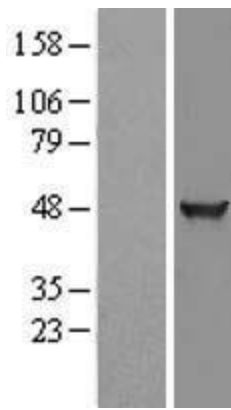
MW: 46.1 kDa

Gene Summary: Represses CREB3-mediated transcription by interfering with CREB3-DNA binding. [UniProtKB/Swiss-Prot Function]

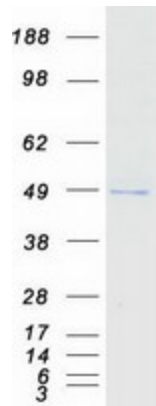
Product images:



Circular map for RC200116



Western blot validation of overexpression lysate (Cat# [LY402313]) using anti-DDK antibody (Cat# [TA50011-100]). Left: Cell lysates from untransfected HEK293T cells; Right: Cell lysates from HEK293T cells transfected with RC200116 using transfection reagent MegaTran 2.0 (Cat# [TT210002]).



Coomassie blue staining of purified KLHDC2 protein (Cat# [TP300116]). The protein was produced from HEK293T cells transfected with KLHDC2 cDNA clone (Cat# RC200116) using MegaTran 2.0 (Cat# [TT210002]).