

Product datasheet for RC200115

ADI1 (NM_018269) Human Tagged ORF Clone

Product data:

Product Type: Expression Plasmids
Product Name: ADI1 (NM_018269) Human Tagged ORF Clone
Tag: Myc-DDK
Symbol: ADI1
Synonyms: APL1; ARD; Fe-ARD; HMFT1638; MTCBP1; mtnD; Ni-ARD; SIPL
Mammalian Cell Selection: Neomycin
Vector: pCMV6-Entry (PS100001)
E. coli Selection: Kanamycin (25 ug/mL)
ORF Nucleotide Sequence: >RC200115 ORF sequence
 Red=Cloning site Blue=ORF Green=Tags(s)

TTTTGTAATACGACTCACTATAGGGCGGCCGGAATTCGTCGACTGGATCCGGTACCGAGGAGATCTGCC
GCC**CGATCGCC**

ATGGTGCAGGCCTGGTATATGGACGACGCCCGGGCGACCCGCGGCAACCCACCGCCCGACCCCGGCC
GCCAGTGGCCTGGAGCAGCTGCGCGGCTCGGGTGTCTACTGGAAGCTGGATGCTGACAAATATGA
GAATGATCCAGAATTAGAAAAGATCCGAAGAGAGAGGAAGTACTCCTGGATGGACATCATAACCATATGC
AAAGATAAACTACAAATATGAAGAAAAGATTAAGATGTTCTACGAGGAGCATTGCCTTGGACGATG
AGATCCGCTACATCCTGGATGGCAGTGGTACTTCGATGTGAGGGACAAGGAGGACCAGTGGATCCGGAT
CTTCATGGAGAAGGAGACATGGTGACGCTCCCCGCGGGATCTATCACCGCTTCACGGTGGACGAGAAG
AACTACACGAAGGCCATGCGGCTGTTTGTGGGAGAACCGGTGGACAGCGTACAACCGCCCGCTGACC
ATTTTGAAGCCCGCGGCAGTACGTGAAATTTCTGGCACAGACCGCC

ACGCGTACGCGGCCGCTCGAGCAGAACTCATCTCAGAAGAGGATCTGGCAGCAAATGATATCCTGGATT
ACAAGGATGACGACGATAAGGTTTAA

Protein Sequence: >RC200115 protein sequence
 Red=Cloning site Green=Tags(s)

MVQAWYMDDAPGDPRQPHRPDPGRPVGLEQLRRLGVLWKLDADKYENDPELEKIRRERNYSWMDIITIC
KDKLPNYEEKIKMFYEEHLHLDDEIRYILDGSGYFDVRDKEDQWIRIFMEKGMVTLPAGIYHRFTVDEK
NYTKAMRLFVGEVWTAYNRPADHFEARGQYVKFLAQT

TRTRPLEQKLISEEDLAANDILDYKDDDDKV

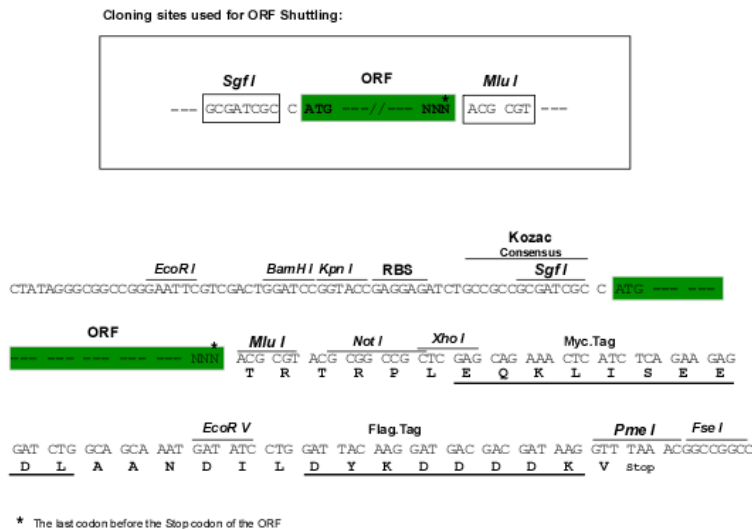
Chromatograms: https://cdn.origene.com/chromatograms/mk6171_c05.zip



[View online »](#)

Restriction Sites: SgfI-MluI

Cloning Scheme:



ACCN: NM_018269

ORF Size: 537 bp

OTI Disclaimer: The molecular sequence of this clone aligns with the gene accession number as a point of reference only. However, individual transcript sequences of the same gene can differ through naturally occurring variations (e.g. polymorphisms), each with its own valid existence. This clone is substantially in agreement with the reference, but a complete review of all prevailing variants is recommended prior to use. [More info](#)

OTI Annotation: This clone was engineered to express the complete ORF with an expression tag. Expression varies depending on the nature of the gene.

Components: The ORF clone is ion-exchange column purified and shipped in a 2D barcoded Matrix tube containing 10ug of transfection-ready, dried plasmid DNA (reconstitute with 100 ul of water).

Reconstitution Method:

1. Centrifuge at 5,000xg for 5min.
2. Carefully open the tube and add 100ul of sterile water to dissolve the DNA.
3. Close the tube and incubate for 10 minutes at room temperature.
4. Briefly vortex the tube and then do a quick spin (less than 5000xg) to concentrate the liquid at the bottom.
5. Store the suspended plasmid at -20°C. The DNA is stable for at least one year from date of shipping when stored at -20°C.

RefSeq: [NM_018269.4](#)

RefSeq Size: 1685 bp

RefSeq ORF: 540 bp

Locus ID: 55256

UniProt ID: [Q9BV57](#)

Cytogenetics: 2p25.3

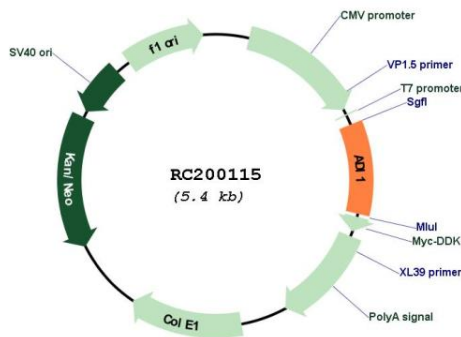
Domains: ARD

Protein Pathways: Cysteine and methionine metabolism, Metabolic pathways

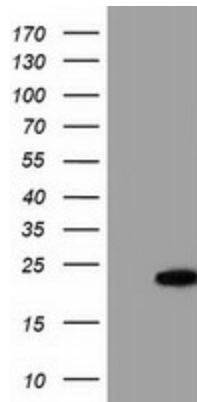
MW: 21.5 kDa

Gene Summary: This gene encodes an enzyme that belongs to the aci-reductone dioxygenase family of metal-binding enzymes, which are involved in methionine salvage. This enzyme may regulate mRNA processing in the nucleus, and may carry out different functions depending on its localization. Related pseudogenes have been defined on chromosomes 8 and 20. Alternative splicing results in multiple transcript variants encoding different isoforms. [provided by RefSeq, Apr 2015]

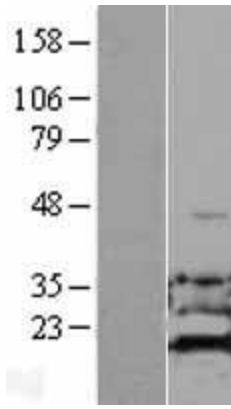
Product images:



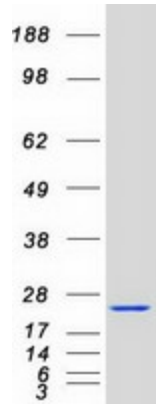
Circular map for RC200115



HEK293T cells were transfected with the pCMV6-ENTRY control (Cat# [PS100001], Left lane) or pCMV6-ENTRY ADI1 (Cat# RC200115, Right lane) cDNA for 48 hrs and lysed. Equivalent amounts of cell lysates (5 ug per lane) were separated by SDS-PAGE and immunoblotted with anti-ADI1 (Cat# [TA501827]). Positive lysates [LY402662] (100ug) and [LC402662] (20ug) can be purchased separately from OriGene.



Western blot validation of overexpression lysate (Cat# [LY402662]) using anti-DDK antibody (Cat# [TA50011-100]). Left: Cell lysates from untransfected HEK293T cells; Right: Cell lysates from HEK293T cells transfected with RC200115 using transfection reagent MegaTran 2.0 (Cat# [TT210002]).



Coomassie blue staining of purified ADI1 protein (Cat# [TP300115]). The protein was produced from HEK293T cells transfected with ADI1 cDNA clone (Cat# RC200115) using MegaTran 2.0 (Cat# [TT210002]).