

Product datasheet for RC200114

C20orf20 (MRGBP) (NM_018270) Human Tagged ORF Clone

Product data:

Product Type: Expression Plasmids
Product Name: C20orf20 (MRGBP) (NM_018270) Human Tagged ORF Clone
Tag: Myc-DDK
Symbol: C20orf20
Synonyms: C20orf20; Eaf7; MRG15BP; URCC4
Mammalian Cell Selection: Neomycin
Vector: pCMV6-Entry (PS100001)
E. coli Selection: Kanamycin (25 ug/mL)
ORF Nucleotide Sequence: >RC200114 ORF sequence
 Red=Cloning site Blue=ORF Green=Tags(s)

TTTTGTAATACGACTCACTATAGGGCGGCCGGAATTCGTCGACTGGATCCGGTACCGAGGAGATCTGCC
 GCC**CGATCGCC**

ATGGGAGAGGCCGAGGTGGGCGGGGGCGCCGAGGCGACAAGGGCCCGGGGAGGGCGCCACCAGCC
 CGGCGGAGGAGACAGTGGTGTGGAGCCCCGAGGTGGAGGTGTGCCTCTCCACGCCATGCTGGGCCACAA
 GCCCGTCGGTGTGAACCGACACTCCACATGATTTGTATTCGGGACAAGTTCAGCCAGAACATCGGGCGG
 CAGGTCCCATCCAAGTCATCTGGGACCATCTGAGCACCATGTACGACATGCAGGCGCTGCATGAGTCTG
 AGATTCTCCATCCCGAATCCAGAGAGAACTTCGTCTTCCAGAAGAGATCATTCCAGGAGTCCGAGA
 AGGAAAAGTGATGATAGAAGAGGAGATGAAAGAGGAGATGAAGGAAGACGTGGACCCCAATGGGGCT
 GACGATGTTTTTTCATCTTCAGGGAGTTTGGGGAAAGCATCAGAAAAATCCAGCAAAAGACAAGAGAAGA
 ACTCCTCAGACTTGGGGTCAAAGAAGGCGCAGACAAGCGGAAGCGCAGCCGGGTACCGACAAAGTCTT
 GACCGCAAACAGCAACCTTCCAGTCCCAGTGTGCCAAGCGGCGCCGCACG

ACGCGTACGCGGCCGCTCGAGCAGAACTCATCTCAGAAGAGGATCTGGCAGCAATGATATCCTGGATT
 ACAAGGATGACGACGATAAGGTTTAA

Protein Sequence: >RC200114 protein sequence
 Red=Cloning site Green=Tags(s)

MGEAEVGGGAAGDKGPGEAATSPAETVWVSPEVEVCLFHAMLGHKPVGVNRHFHMICIRDKFSQNIQR
 QVPSKVIWDHLSTMYDMQALHESEILPFPNPERNFVLPPEEIIQEVREGKVMIEEEMKEEMKEDVDPHNGA
 DDVFSSSGSLGKASEKSSKDKENSSDLGCKEGADKRKRSRVTDKVL TANSNPSSPSAAKRRRT

TRTRPLEQKLISEEDLAANDILDYKDDDDKV

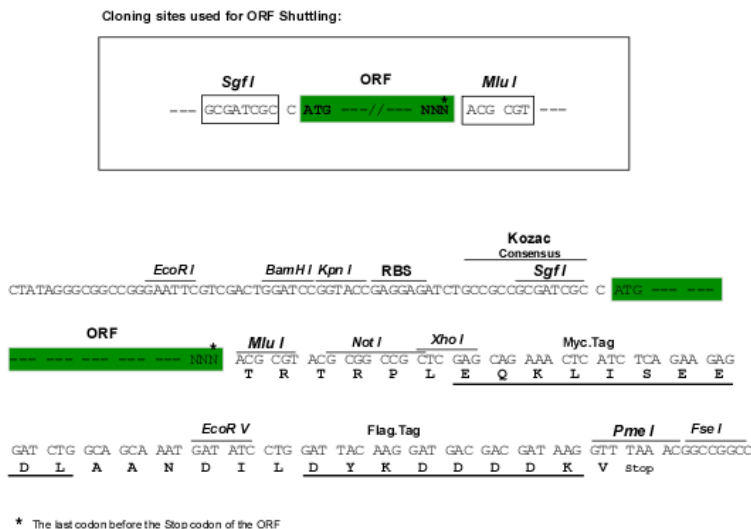


[View online »](#)

Chromatograms: https://cdn.origene.com/chromatograms/mk6418_d01.zip

Restriction Sites: SgfI-MluI

Cloning Scheme:



ACCN: NM_018270

ORF Size: 612 bp

OTI Disclaimer: The molecular sequence of this clone aligns with the gene accession number as a point of reference only. However, individual transcript sequences of the same gene can differ through naturally occurring variations (e.g. polymorphisms), each with its own valid existence. This clone is substantially in agreement with the reference, but a complete review of all prevailing variants is recommended prior to use. [More info](#)

OTI Annotation: This clone was engineered to express the complete ORF with an expression tag. Expression varies depending on the nature of the gene.

Components: The ORF clone is ion-exchange column purified and shipped in a 2D barcoded Matrix tube containing 10ug of transfection-ready, dried plasmid DNA (reconstitute with 100 ul of water).

Reconstitution Method:

1. Centrifuge at 5,000xg for 5min.
2. Carefully open the tube and add 100ul of sterile water to dissolve the DNA.
3. Close the tube and incubate for 10 minutes at room temperature.
4. Briefly vortex the tube and then do a quick spin (less than 5000xg) to concentrate the liquid at the bottom.
5. Store the suspended plasmid at -20°C. The DNA is stable for at least one year from date of shipping when stored at -20°C.

RefSeq: [NM_018270.6](#)

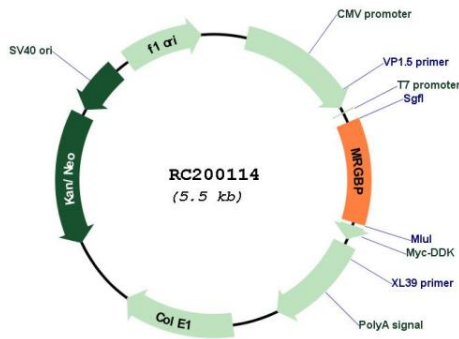
RefSeq Size: 1659 bp

RefSeq ORF: 615 bp

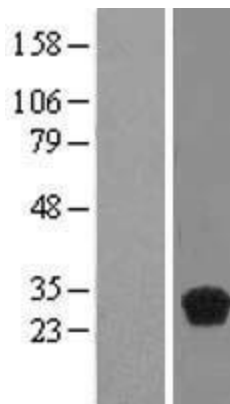
Locus ID: 55257

UniProt ID: [Q9NV56](#)
Cytogenetics: 20q13.33
Protein Families: Transcription Factors
MW: 22.4 kDa
Gene Summary: Component of the NuA4 histone acetyltransferase (HAT) complex which is involved in transcriptional activation of select genes principally by acetylation of nucleosomal histones H4 and H2A. This modification may both alter nucleosome - DNA interactions and promote interaction of the modified histones with other proteins which positively regulate transcription. This complex may be required for the activation of transcriptional programs associated with oncogene and proto-oncogene mediated growth induction, tumor suppressor mediated growth arrest and replicative senescence, apoptosis, and DNA repair. NuA4 may also play a direct role in DNA repair when recruited to sites of DNA damage. [UniProtKB/Swiss-Prot Function]

Product images:



Circular map for RC200114



Western blot validation of overexpression lysate (Cat# [LY413166]) using anti-DDK antibody (Cat# [TA50011-100]). Left: Cell lysates from untransfected HEK293T cells; Right: Cell lysates from HEK293T cells transfected with RC200114 using transfection reagent MegaTran 2.0 (Cat# [TT210002]).