

Product datasheet for **RC200107**

MADM (NRBP1) (NM_013392) Human Tagged ORF Clone

Product data:

Product Type:	Expression Plasmids
Product Name:	MADM (NRBP1) (NM_013392) Human Tagged ORF Clone
Tag:	Myc-DDK
Symbol:	MADM
Synonyms:	BCON3; MADM; MUDPNP; NRBP
Mammalian Cell Selection:	Neomycin
Vector:	pCMV6-Entry (PS100001)
E. coli Selection:	Kanamycin (25 ug/mL)



[View online »](#)

ORF Nucleotide Sequence:

>RC200107 ORF sequence
 Red=Cloning site Blue=ORF Green=Tags(s)

TTTTGTAATACGACTCACTATAGGGCGGCCGGAATTCGTCGACTGGATCCGGTACCGAGGAGATCTGCC
 GCC**GCGATCGCC**

ATGTCGGAGGGGAGTCCCAGACAGTACTTAGCAGTGGCTCAGACCCAAAGGTAGAATCCTCATCTTCAG
 CTCTGGCTGACATCAGTGTCACTCCTGTGACTCCACAACCTCAGCTGCTTCCCAGAGGAAGAAGA
 AGAAAGTGAAGATGAGTCTGAGATTTTGAAGAGTCGCCCTGTGGGCGCTGGCAGAAAGGCGAGAAGAG
 GTGAATCAACGGAATGTACCAGGTATTGACAGTGCATACCTGGCCATGGATACAGAGGAAGGTGTAGAGG
 TTGTGTGGAATGAGGTACAGTTCTCTGAACGCAAGAACTACAAGCTGCAGGAGGAAAAGTTCTGTCTGT
 GTTTGATAATCTGATTCAATTGGAGCATTTAACATTGTTAAGTTTACAAAATTTGGGCTGACATTA
 GAGAACAAAGGCCAGGGTCATTTTATCACAGAATACATGCATCTGGGAGTCTGAAGCAATTTCTGAAGA
 AGACAAAAAAGAACCAAGACGATGAATGAAAAGGCATGGAAGCGTTGGTGCACAAAACTCTCTCTGC
 CCTAAGCTACCTGCACTCTGTGACCCCCCATCATCCATGGGAACCTGACCTGTGACACCATCTTCATC
 CAGCACAAAGGACTCATCAAGATTGGCTCTGTGGCTCCTGACACTATCAACAATCATGTGAAGACTTGT
 GAGAAGAGCAGAAGAATCTACACTTCTTTGCACCAGAGTATGGAGAAGTCACTAATGTGACAACAGCAGT
 GGACATCTACTCCTTTGGCATGTGTGACTGGAGATGGCAGTGTGGAGATTGAGGGCAATGGAGAGTCC
 TCATATGTGCCACAGGAAGCCATCAGCAGTCCATCCAGCTTCTAGAAGACCCATTACAGAGGGAGTTCA
 TTCAAAGTGCCTGCAGTCTGAGCCTGCTCGCAGACCAACAGCCAGAGAACTTCTGTTCCACCCAGCATT
 GTTTGAAGTGCCTCGCTCAAACCTTGGCGCCACTGCATTGTGGGACCAACACATGATCCAGAG
 AACGCTCTAGAGGAGATCACAAAAACATGGATACTAGTGCCGTACTGGCTGAAATCCCTGCAGGACCAG
 GAAGAGAACCAGTTCAGACTTTGTACTCTCAGTACCAGCTCTGGAATTAGATAAATCCCTGAAGATGT
 CAGGAATGGGATCTATCCTCTGACAGCCTTTGGGCTGCCTCGGCCCCAGCAGCCACAGCAGGAGGAGGTG
 ACATCACCTGTGCTGCCCCCTCTGTCAAGACTCCGACACCTGAACCAGCTGAGGTGGAGACTCGCAAGG
 TGGTGCTGATGCAGTGAACATTGAGTCGGTGGAGGAGGAGTCAAACACCACCTGACACTTCTGTGAA
 GTTGGAGGACAACTGAACCGGCACCTGAGCTGTGACCTGATGCCAAATGAGAATATCCCGAGTTGGCG
 GCTGAGCTGGTGCAGCTGGGCTTATTAGTGAGGCTGACCAGAGCCGGTTGACTTCTCTGCTAGAAGAGA
 CCTTGAACAAGTCAATTTGCCAGGAACAGTACCCTCAACTCAGCCGCTGCACCGTCTCTCT

ACGCGTACGCGGCCGCTCGAGCAGAAACTCATCTCAGAAGAGGATCTGGCAGCAAATGATATCTGGATT
 ACAAGGATGACGACGATAAGGTTTAA

Protein Sequence:

>RC200107 protein sequence
 Red=Cloning site Green=Tags(s)

MSEGESQTVLSSGSDPKVESSSAPGLTSVSPVSTTSAASPEEEEESEDESEILEESPCGRWQKRREE
 VNQRNVPGIDSAYLAMDTTEEGVEVWNEVQF SERKNYKLQEEKVRAVFDNLIQLEHLNIVKFHKYWADIK
 ENKARVIFITEYMSSGSLKQFLKTKKNHKT MNEKAWKRWCTQILSALSYLHSCDPPPIHGNLTCDTIFI
 QHNLGIKIGSVAPDTINNHVKTCEEQKNLHFFAPEYGEVTNVTTAVDIYSFGMCALEMAVLEIQNGES
 SYVPQEAISSAIQLLEDPLQREFIQKCLQSEPARRPTARELLFHPALFEVPSLKLAAHCIVGHQHMPIE
 NALEEITKNMDSAVLAEIPAGPGREPQTLYSQSPAELDKFLEDVRNGIYPLTAFGLPRPQQPQQEEV
 TSPVPPSVKTPTEPAEVETRKVVLMQCNIESVEEGVKHHLTLLKLEDKLNRLSCDLM PNENIPELA
 AELVQLGFISEADQSRLTSLLEETLNKFNFNARNSTLNSAAVTVSS

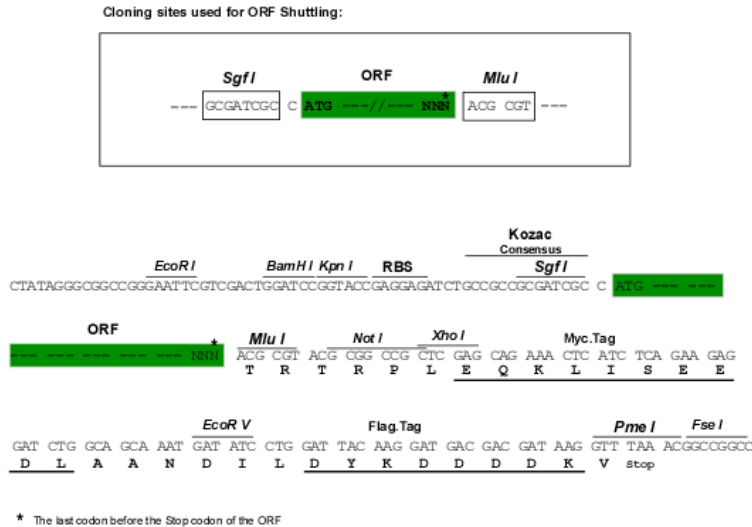
TRTRPLEQKLISEEDLAANDILDYKDDDDKV

Chromatograms:

https://cdn.origene.com/chromatograms/mk6588_g04.zip

Restriction Sites:

Sgfl-Mlul

Cloning Scheme:


ACCN: NM_013392

ORF Size: 1605 bp

OTI Disclaimer: The molecular sequence of this clone aligns with the gene accession number as a point of reference only. However, individual transcript sequences of the same gene can differ through naturally occurring variations (e.g. polymorphisms), each with its own valid existence. This clone is substantially in agreement with the reference, but a complete review of all prevailing variants is recommended prior to use. [More info](#)

OTI Annotation: This clone was engineered to express the complete ORF with an expression tag. Expression varies depending on the nature of the gene.

Components: The ORF clone is ion-exchange column purified and shipped in a 2D barcoded Matrix tube containing 10ug of transfection-ready, dried plasmid DNA (reconstitute with 100 ul of water).

- Reconstitution Method:**
1. Centrifuge at 5,000xg for 5min.
 2. Carefully open the tube and add 100ul of sterile water to dissolve the DNA.
 3. Close the tube and incubate for 10 minutes at room temperature.
 4. Briefly vortex the tube and then do a quick spin (less than 5000xg) to concentrate the liquid at the bottom.
 5. Store the suspended plasmid at -20°C. The DNA is stable for at least one year from date of shipping when stored at -20°C.

Note: Plasmids are not sterile. For experiments where strict sterility is required, filtration with 0.22um filter is required.

RefSeq: [NM_013392.4](#)

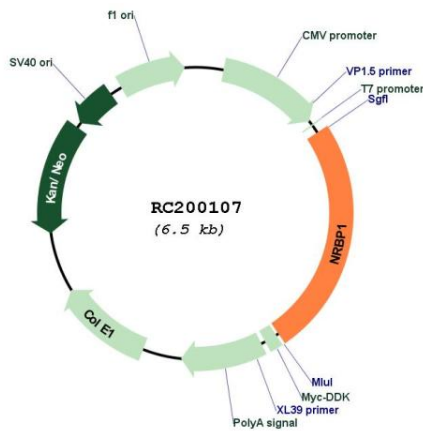
RefSeq Size: 2212 bp

RefSeq ORF: 1608 bp

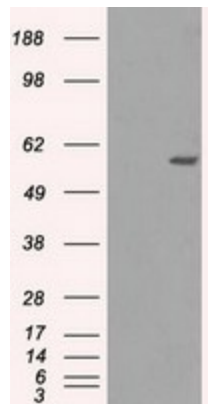
Locus ID: 29959

UniProt ID: [Q9UHY1](#)
Cytogenetics: 2p23.3
Domains: pkinase, TyrKc, S_TKc
Protein Families: Druggable Genome, Protein Kinase
MW: 59.8 kDa
Gene Summary: May play a role in subcellular trafficking between the endoplasmic reticulum and Golgi apparatus through interactions with the Rho-type GTPases. Binding to the NS3 protein of dengue virus type 2 appears to subvert this activity into the alteration of the intracellular membrane structure associated with flaviviral replication.[UniProtKB/Swiss-Prot Function]

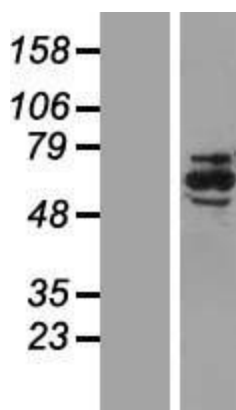
Product images:



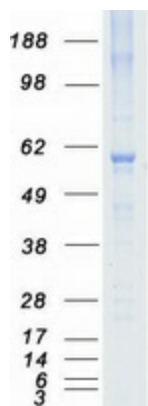
Circular map for RC200107



HEK293T cells were transfected with the pCMV6-ENTRY control (Cat# [PS100001], Left lane) or pCMV6-ENTRY NRBP1 (Cat# RC200107, Right lane) cDNA for 48 hrs and lysed. Equivalent amounts of cell lysates (5 ug per lane) were separated by SDS-PAGE and immunoblotted with anti-NRBP1 (Cat# [TA500437]). Positive lysates [LY415614] (100ug) and [LC415614] (20ug) can be purchased separately from OriGene.



Western blot validation of overexpression lysate (Cat# [LY415614]) using anti-DDK antibody (Cat# [TA50011-100]). Left: Cell lysates from untransfected HEK293T cells; Right: Cell lysates from HEK293T cells transfected with RC200107 using transfection reagent MegaTran 2.0 (Cat# [TT210002]).



Coomassie blue staining of purified NRBP1 protein (Cat# [TP300107]). The protein was produced from HEK293T cells transfected with NRBP1 cDNA clone (Cat# RC200107) using MegaTran 2.0 (Cat# [TT210002]).