

## Product datasheet for RC200104L1

### Aspartyl Aminopeptidase (DNPEP) (NM\_012100) Human Tagged Lenti ORF Clone

#### Product data:

Product Type:	Expression Plasmids
Product Name:	Aspartyl Aminopeptidase (DNPEP) (NM_012100) Human Tagged Lenti ORF Clone
Tag:	Myc-DDK
Symbol:	Aspartyl Aminopeptidase
Synonyms:	ASPEP; DAP
Mammalian Cell Selection:	None
Vector:	pLenti-C-Myc-DDK (PS100064)
E. coli Selection:	Chloramphenicol (34 ug/mL)
ORF Nucleotide Sequence:	The ORF insert of this clone is exactly the same as(RC200104).
Restriction Sites:	SgfI-RsrII
Cloning Scheme:	

Cloning sites used for ORF Shuttling:



\* The last codon before the Stop codon of the ORF.

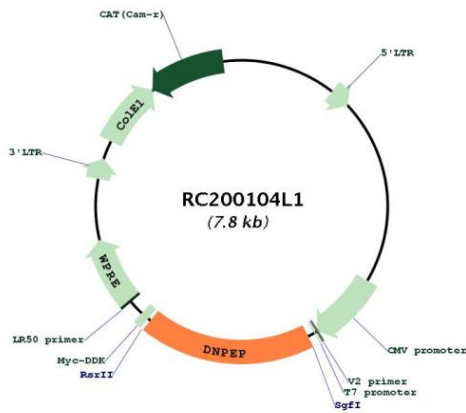
ACCN:	NM_012100
ORF Size:	1425 bp



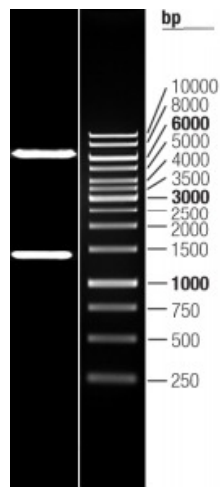
[View online »](#)

<b>OTI Disclaimer:</b>	The molecular sequence of this clone aligns with the gene accession number as a point of reference only. However, individual transcript sequences of the same gene can differ through naturally occurring variations (e.g. polymorphisms), each with its own valid existence. This clone is substantially in agreement with the reference, but a complete review of all prevailing variants is recommended prior to use. <a href="#">More info</a>
<b>OTI Annotation:</b>	This clone was engineered to express the complete ORF with an expression tag. Expression varies depending on the nature of the gene.
<b>Components:</b>	The ORF clone is ion-exchange column purified and shipped in a 2D barcoded Matrix tube containing 10ug of transfection-ready, dried plasmid DNA (reconstitute with 100 ul of water).
<b>Reconstitution Method:</b>	<ol style="list-style-type: none"><li>1. Centrifuge at 5,000xg for 5min.</li><li>2. Carefully open the tube and add 100ul of sterile water to dissolve the DNA.</li><li>3. Close the tube and incubate for 10 minutes at room temperature.</li><li>4. Briefly vortex the tube and then do a quick spin (less than 5000xg) to concentrate the liquid at the bottom.</li><li>5. Store the suspended plasmid at -20°C. The DNA is stable for at least one year from date of shipping when stored at -20°C.</li></ol>
<b>RefSeq:</b>	<a href="#">NM_012100.2</a> , <a href="#">NP_036232.1</a>
<b>RefSeq Size:</b>	2438 bp
<b>RefSeq ORF:</b>	1458 bp
<b>Locus ID:</b>	23549
<b>UniProt ID:</b>	<a href="#">Q9ULA0</a>
<b>Cytogenetics:</b>	2q35
<b>Domains:</b>	Peptidase_M18
<b>Protein Families:</b>	Druggable Genome, Protease
<b>MW:</b>	52.4 kDa
<b>Gene Summary:</b>	The protein encoded by this gene is an aminopeptidase which prefers acidic amino acids, and specifically favors aspartic acid over glutamic acid. It is thought to be a cytosolic protein involved in general metabolism of intracellular proteins. Several transcript variants encoding different isoforms have been found for this gene. [provided by RefSeq, Jan 2016]

Product images:



Circular map for RC200104L1



Double digestion of RC200104L1 using SgfI and RsrII