

Product datasheet for **RC200104**

Aspartyl Aminopeptidase (DNPEP) (NM_012100) Human Tagged ORF Clone

Product data:

Product Type:	Expression Plasmids
Product Name:	Aspartyl Aminopeptidase (DNPEP) (NM_012100) Human Tagged ORF Clone
Tag:	Myc-DDK
Symbol:	Aspartyl Aminopeptidase
Synonyms:	ASPEP; DAP
Mammalian Cell Selection:	Neomycin
Vector:	pCMV6-Entry (PS100001)
E. coli Selection:	Kanamycin (25 ug/mL)



[View online »](#)

ORF Nucleotide Sequence:

>RC200104 ORF sequence
 Red=Cloning site Blue=ORF Green=Tags(s)

TTTTGTAATACGACTCACTATAGGGCGGCCGGAATTCGTCGACTGGATCCGGTACCGAGGAGATCTGCC
 GCC**GCGATCGCC**

ATGCAAGTGGCCATGAACGGTAAGGCCCGCAAAGAGCGGTGCAGACTGCGGCTAAGGAACCTCAAGT
 TCGTGAACCGGAGTCCCTCTCCTTTCCATGCTGTGGCTGAATGCCGCAACCGCCTTCTCCAGGCTGGCTT
 CAGTGAACCAAGGAGACTGAGAAATGGAATATTAAGCCCGAGAGCAAGTACTTCATGACCAGGAACTCC
 TCCACCATCATAGCTTTTGTGTAGGGGGCCAGTACGTTCTGGCAATGGCTTCAGCCTCATCGGGGCC
 ACACGGACAGCCCTGCCTCCGGGTGAAACGTCGGTCTCGCCGACCCAGGTGGGCTTCCAGCAAGTCGG
 TGTGGAGACCTATGGTGGTGGGATCTGGAGCACCTGGTTTGACCGTGACCTGACTCTGGTGGACGCGTC
 ATTGTCAAGTGCCTACCTCAGTCCGGTGGAGCAGCAGCTGGTGCAGTGGAGCGGCCATTCTTCGCA
 TCCACACCTGGCCATCCATCTGCAGCGAAATATCAACGAGAACTTGGGCCAACACAGAGATGCATCT
 AGTCCCCATTCTGCCACAGCCATCCAGGAGGAGCTGGAGAAGGGGACTCCTGAGCCAGGGCCTCTCAAT
 GCTGTGGATGAGCGGCACCATTCGGTCCCTCATGTCCCTGCTCTGTGCCATCTGGGGCTGAGCCCCAAGG
 ACATAGTGGAGATGGAGCTCTGCCTTGACAGACCCAGCCTGCGGTCTTGGTGGTGCCTATGATGAGTT
 CATCTTTGCTCCTCGGCTGGACAATCTGCACAGCTGCTTCTGTGCCCTGCAGGCCTTGATAGATTCTGT
 GCAGGCCCTGGCTCCCTGGCCACAGAGCCTCACGTGCGCATGGTCACTCTATGACAACGAAGAGGTGG
 GGTCTGAGAGTGCACAGGGAGCAGTCACTGCTGACAGAGCTGGTGTGCGGGCGATCTCAGCCTCGTG
 CCAGCACCCGACAGCCTTCGAGGAAGCCATACCAAGTCTTTCATGATCAGCGCAGACATGGCCATGCT
 GTGCATCCCACTACCTGGACAAGCATGAGGAGAACCACCGGCCCTTATCCACAAGGGCCCCGTGATCA
 AGGTGAACAGCAAGCAACGCTATGCTTCAAACCGGTGTGAGAGCCCTGATCCGAGAGGTGGCCAA
 AGTCAAGGTCCCCTGCAGGATCTCATGGTCCGGAATGACACCCCTGTGGAACACCATTGGACCTATC
 TTGGCTTCTCGGCTGGGGCTGCGGGTGTGGATTTAGGCAGCCCCAACTGGCCATGCACTCTATCCGGG
 AGATGGCTGCACCACAGGAGTCTCCAGACCCTCACCTCTTCAAGGGTCTTTGAGCTGTTCCCTTC
 TCTAAGCCATAATCTCTTAGTGGAT

AG**GCGACCG**ACGCGTACGCGGCCGCTCGAGCAGAACTCATCTCAGAAGAGGATCTGGCAGCAAATGATATCC
 TGGATTACAAGGATGACGACGATAAGGTTAA

Protein Sequence:

>RC200104 protein sequence
 Red=Cloning site Green=Tags(s)

MQVAMNGKARKEAVQTAAKELLKFVNRSPSPFHAVAECRNRLQAGFSELKETEKWNIKPESKYFMTRNS
 STIIAFVGGQYVPGNGFSLIGAHTDSPCLRVKRRSRRSQVGFQVGVETYGGGIWSWFDRDLTLAGRV
 IVKPTSGRLEQLVHVERPILRIPHLAIHLQRNINENFGPNTEMHLVPIIATAIQEELEKGTPEPGLN
 AVDERHHSVLMSELLCAHLGLSPKDIVEMELCLADTQPAVLGGAYDEFIFAPRLDNLHSCFCALQALIDSC
 AGPGLATEPHVRMVTLYDNEEVGSESAQGAQSLLTELVLRRISASCQHPTAFEEAIPKSFMISADMAHA
 VHPNYLDKHEENHRPLFHKGPVIKVNKQRYASNAVSEALIREVANKVKVPLQDLMVRNDTPCGTTIGPI
 LASRLGLRVLDLGSPQLAMHSIREMACTGVLQTLTLFKGFFELFPSLSHNLLVD

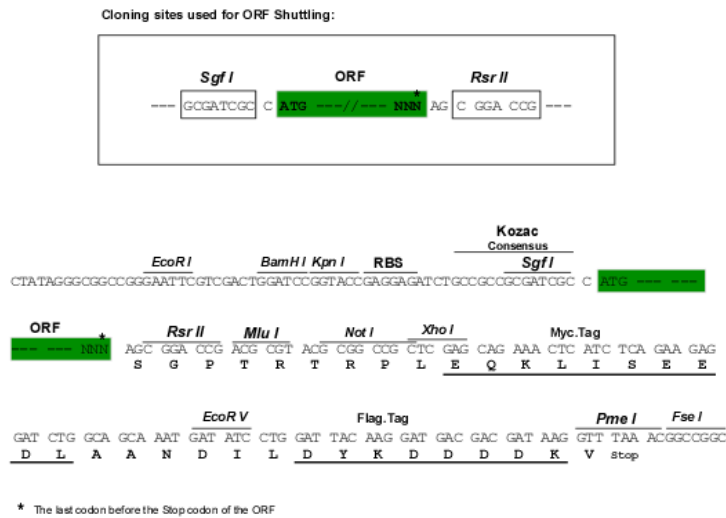
SGPTRTRPLEQKLI SEEDLAANDILDYKDDDDKV

Chromatograms:

https://cdn.origene.com/chromatograms/mk6190_g03.zip

Restriction Sites:

Sgfl-RsrII

Cloning Scheme:


ACCN: NM_012100

ORF Size: 1425 bp

OTI Disclaimer: The molecular sequence of this clone aligns with the gene accession number as a point of reference only. However, individual transcript sequences of the same gene can differ through naturally occurring variations (e.g. polymorphisms), each with its own valid existence. This clone is substantially in agreement with the reference, but a complete review of all prevailing variants is recommended prior to use. [More info](#)

OTI Annotation: This clone was engineered to express the complete ORF with an expression tag. Expression varies depending on the nature of the gene.

Components: The ORF clone is ion-exchange column purified and shipped in a 2D barcoded Matrix tube containing 10ug of transfection-ready, dried plasmid DNA (reconstitute with 100 ul of water).

Reconstitution Method:

1. Centrifuge at 5,000xg for 5min.
2. Carefully open the tube and add 100ul of sterile water to dissolve the DNA.
3. Close the tube and incubate for 10 minutes at room temperature.
4. Briefly vortex the tube and then do a quick spin (less than 5000xg) to concentrate the liquid at the bottom.
5. Store the suspended plasmid at -20°C. The DNA is stable for at least one year from date of shipping when stored at -20°C.

RefSeq: [NM_012100.1](#), [NP_036232.1](#)

RefSeq Size: 2438 bp

RefSeq ORF: 1458 bp

Locus ID: 23549

UniProt ID: [Q9ULA0](#)

Cytogenetics: 2q35

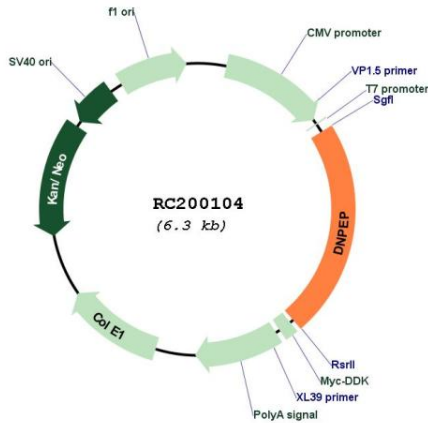
Domains: Peptidase_M18

Protein Families: Druggable Genome, Protease

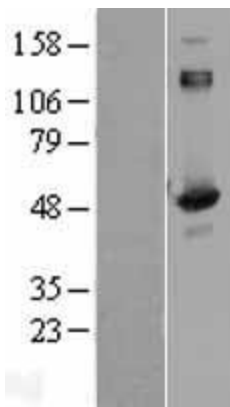
MW: 52.4 kDa

Gene Summary: The protein encoded by this gene is an aminopeptidase which prefers acidic amino acids, and specifically favors aspartic acid over glutamic acid. It is thought to be a cytosolic protein involved in general metabolism of intracellular proteins. Several transcript variants encoding different isoforms have been found for this gene. [provided by RefSeq, Jan 2016]

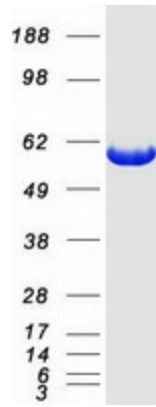
Product images:



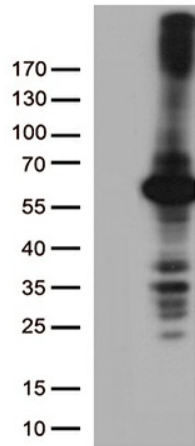
Circular map for RC200104



Western blot validation of overexpression lysate (Cat# [LY402151]) using anti-DDK antibody (Cat# [TA50011-100]). Left: Cell lysates from untransfected HEK293T cells; Right: Cell lysates from HEK293T cells transfected with RC200104 using transfection reagent MegaTran 2.0 (Cat# [TT210002]).



Coomassie blue staining of purified DNPEP protein (Cat# [TP300104]). The protein was produced from HEK293T cells transfected with DNPEP cDNA clone (Cat# RC200104) using MegaTran 2.0 (Cat# [TT210002]).



HEK293T cells were transfected with the pCMV6-ENTRY control (Cat# [PS100001], Left lane) or pCMV6-ENTRY DNPEP (Cat# RC200104, Right lane) cDNA for 48 hrs and lysed. Equivalent amounts of cell lysates (5 ug per lane) were separated by SDS-PAGE and immunoblotted with anti-DNPEP (Cat# [TA812760])(1:500). Positive lysates [LY402151] (100ug) and [LC402151] (20ug) can be purchased separately from OriGene.