

Product datasheet for RC200101

SLC35C1 (NM_018389) Human Tagged ORF Clone

Product data:

Product Type:	Expression Plasmids
Product Name:	SLC35C1 (NM_018389) Human Tagged ORF Clone
Tag:	Myc-DDK
Symbol:	SLC35C1
Synonyms:	CDG2C; FUCT1
Mammalian Cell Selection:	Neomycin
Vector:	pCMV6-Entry (PS100001)
E. coli Selection:	Kanamycin (25 ug/mL)
ORF Nucleotide Sequence:	>RC200101 ORF sequence Red=Cloning site Blue=ORF Green=Tags(s)

TTTTGTAATACGACTCACTATAGGGCGCCGGGAATTCGTCGACTGGATCCGGTACCGAGGAGATCTGCC
GCC**CGATCGCC**

ATGAATAGGGCCCTCTGAAGCGGTCCAGGATCCTGCACATGGCGCTGACCGGGCCTCAGACCCCTCTG
CAGAGGCAGAGGCCAACGGGGAGAAGCCCTTCTGCTGCGGGCATTGCAGATCGCGCTGGTGGTCTCCCT
CTACTCGGTCACCTCCATCTCCATGGTGTTCCTTAATAAGTACCTGCTGGACAGCCCTCCCTGCGGCTG
GACACCCCATCTTCGTACCTTCTACCAGTGCCTGGTGACCACGCTGCTGTGCAAAGGCCTCAGCGCTC
TGGCCCGCTGCTGCCCTGGTGGCGTGGACTTCCCAGCTTGGCCCTGGACCTCAGGGTGGCCCGCAGCGT
CCTGCCCTGTGCGTGGTCTTATCGGCATGATCACCTTCAATAACCTCTGCCTCAAGTACGTGCGTGTG
GCCTTCTACAATGTGGCCGCTCACTCACACCGTCTTCAACGTGCTGCTCTCCTACCTGCTGCTCAAGC
AGACCACCTCCTTCTATGCCCTGCTCACCTGCGGTATCATCATCGGGGGCTTCTGGCTTGGTGTGGACCA
GGAGGGGGCAGAAGGCACCCTGTGCTGGTGGGCACCGTCTTGGCGTGTGGCTAGCCTCTGTGCTCG
CTCAACGCCATCTACACCACGAAGGTGCTCCCGCGGTGGACGGCAGCATCTGGCGCCTGACTTTCTACA
ACAACGTCAACGCCTGCATCCTTCTGCCCCGCTCCTGCTGCTCGGGGAGCTTACAGCCCTGCGTGA
CTTTGCCAGCTGGGCAGTGGCCACTTCTGGGGATGATGACGCTGGCGGCCTGTTGGCTTGGCATC
GGCTACGTGACAGGACTGCAGATCAAGTTCACCGTCCGCTGACCCACAATGTGTCGGGCACGGCCAAG
CCTGTGCCAGACAGTGTGCGCGTCTACTACGAGGAGACCAAGAGCTTCTCTGGTGACGAGCAA
CATGATGGTGTGGCGGCTCCTCCGCTACACCTGGGTGAGGGCTGGGAGATGAAGAAGACTCCGGAG
GAGCCAGCCCCAAGACAGCGAGAAGAGCGCCATGGGGTG

ACGCGTACGCGGCCGCTCGAGCAGAACTCATCTCAGAAGAGGATCTGGCAGCAATGATATCCTGGATT
ACAAGGATGACGACGATAAGGTTAA



[View online »](#)

Protein Sequence: >RC200101 protein sequence
Red=Cloning site Green=Tags(s)

MNRAPLKRSRILHMLTGASDPSAEAEANGKPFLLRALQIALVVSLYSVTSISMVFLNKYLLDPSRLRL
 DTPIFVTFYQCLVTLLCKGLSALAACCPGAVDFPSLRDLDRVARSVLPLSVVFIGMITFNCLKYVGV
 AFYNVGRSLTTVFNVLLSYLLKQTTSFYALLTCGIIIGGFWLVDQEGAEGTSLWLTGTVFVGLASL CVS
 LNAIYTTKVLPAVDGSIWRLTFYNNVNACILFLPLLLLGLQALRDFALQLSAHFWGMMTLGGLFGFAI
 GYVTGLQIKFTSPLTHNVSGTAKACAQTVLAVLYYEETKSFLWWTSNMMVLGGSSAYTWVRGWEMKKTPE
 EPSPKDSEKSAMGV

TRTRPLEQKLISEEDLAANDILDYKDDDDKV

Chromatograms: https://cdn.origene.com/chromatograms/mk6386_e11.zip

Restriction Sites: SgfI-MluI

Cloning Scheme:



ACCN: NM_018389

ORF Size: 1092 bp

OTI Disclaimer: The molecular sequence of this clone aligns with the gene accession number as a point of reference only. However, individual transcript sequences of the same gene can differ through naturally occurring variations (e.g. polymorphisms), each with its own valid existence. This clone is substantially in agreement with the reference, but a complete review of all prevailing variants is recommended prior to use. [More info](#)

OTI Annotation: This clone was engineered to express the complete ORF with an expression tag. Expression varies depending on the nature of the gene.

Components: The ORF clone is ion-exchange column purified and shipped in a 2D barcoded Matrix tube containing 10ug of transfection-ready, dried plasmid DNA (reconstitute with 100 ul of water).

Reconstitution Method:

1. Centrifuge at 5,000xg for 5min.
2. Carefully open the tube and add 100ul of sterile water to dissolve the DNA.
3. Close the tube and incubate for 10 minutes at room temperature.
4. Briefly vortex the tube and then do a quick spin (less than 5000xg) to concentrate the liquid at the bottom.
5. Store the suspended plasmid at -20°C. The DNA is stable for at least one year from date of shipping when stored at -20°C.

Note: Plasmids are not sterile. For experiments where strict sterility is required, filtration with 0.22um filter is required.

RefSeq: [NM_018389.3](#), [NP_060859.3](#)

RefSeq Size: 3531 bp

RefSeq ORF: 1095 bp

Locus ID: 55343

UniProt ID: [Q96A29](#)

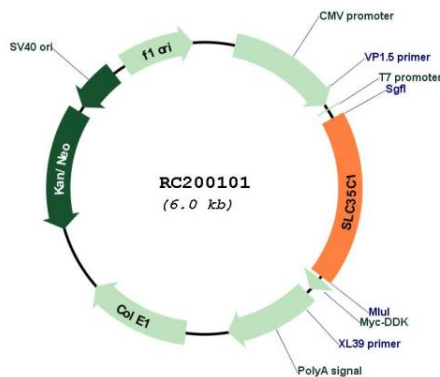
Cytogenetics: 11p11.2

Protein Families: Transmembrane

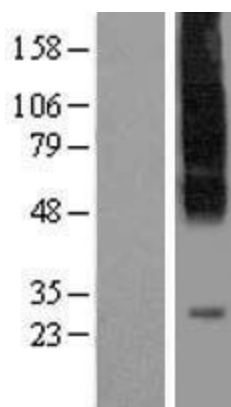
MW: 39.7 kDa

Gene Summary: This gene encodes a GDP-fucose transporter that is found in the Golgi apparatus. Mutations in this gene result in congenital disorder of glycosylation type IIc. Multiple transcript variants encoding different isoforms have been found for this gene. [provided by RefSeq, Feb 2009]

Product images:



Circular map for RC200101



Western blot validation of overexpression lysate (Cat# [LY413088]) using anti-DDK antibody (Cat# [TA50011-100]). Left: Cell lysates from untransfected HEK293T cells; Right: Cell lysates from HEK293T cells transfected with RC200101 using transfection reagent MegaTran 2.0 (Cat# [TT210002]).