

Product datasheet for **RC200086**

GOLPH2 (GOLM1) (NM_177937) Human Tagged ORF Clone

Product data:

Product Type:	Expression Plasmids
Product Name:	GOLPH2 (GOLM1) (NM_177937) Human Tagged ORF Clone
Tag:	Myc-DDK
Symbol:	GOLPH2
Synonyms:	bA379P1.3; C9orf155; GOLPH2; GP73; HEL46; PSEC0257
Mammalian Cell Selection:	Neomycin
Vector:	pCMV6-Entry (PS100001)
E. coli Selection:	Kanamycin (25 ug/mL)
ORF Nucleotide Sequence:	>RC200086 ORF sequence Red=Cloning site Blue=ORF Green=Tags(s)

TTTTGTAATACGACTCACTATAGGGCGGCCGGAATTCGTCGACTGGATCCGGTACCGAGGAGATCTGCC
GCC**CGATCGCC**

ATGGGCTTGGGAAACGGGCGTCGCAGCATGAAGTCGCCGCCCTCGTGCTGGCCGCCCTGGTGGCCTGCA
TCATCGTCTTGGGCTTCAACTACTGGATTGCGAGCTCCCGGAGCGTGACCTCCAGACACGGATCATGGA
GCTGGAAGGCAGGGTCCGAGGGCGGCTGCAGAGAGAGGCCCGTGGAGCTGAAGAAGAACGAGTCCAG
GGAGAGCTGGAGAAGCAGCGGGAGCAGCTTGACAAAATCCAGTCCAGCCACAACCTCCAGCTGGAGAGCG
TCAACAAGCTGTACCAGGACGAAAAGCGGTTTTGGTGAATAACATCACCACAGGTGAGAGGCTCATCCG
AGTGCTGCAAGACCAGTTAAAGACCCTGCAGAGGAATTACGGCAGGCTGCAGCAGGATGTCTCCAGTTT
CAGAAGAACCAGACCAACCTGGAGAGGAAGTTCTCTACGACCTGAGCCAGTGCATCAATCAGATGAAGG
AGGTGAAGGAACAGTGTGAGGAGCGAATAGAAGAGGTCACAAAAAGGGGAATGAAGCTGTAGCTCCAG
AGACCTGAGTGAAAAACAACGACCAGAGACAGCAGCTCCAAGCCCTCAGTGAAGCTCAGCCAGGCTGCAG
GCAGCAGGCTGCCACACAGAGGTGCCACAAGGGAAGGAAACGTGCTTGGTAAACAGCAAGTCCCAGA
CACCAGCCCCAGTCCGAAGTGGTTTTGGATTCAAAGAGACAAGTTGAGAAAGAGGAAACCAATGAGAT
CCAGGTGGTGAATGAGGAGCCTCAGAGGGACAGGCTGCCGAGGAGCCAGGCCGGGAGCAGGTGGTGGAA
GACAGACCTGTAGTGGAAGAGGCTTCGGGGGAGCCGGAAGTGGCCAGACCCACAGGTGCAGGCTG
CCCTGTCACTGAGCCAGGAAAATCCAGAGATGGAGGGCCCTGAGCGAGACCAAGCTTGTATCCCCGACGG
ACAGGAGGAGGAGCAGGAAGCTGCCGGGAAGGGAGAAAACAGCAGAAAACAGAGGAGAAAGATGACTAC
AACATGGATGAAAATGAAGCAGAATCTGAGACAGACAAGCAAGCAGCCCTGGCAGGGAATGACAGAAAAC
TAGATGTTTTTAATGTTGAAGATCAGAAAAGAGACACCATAAAATTTACTTGATCAGCGTGAAAAGCGGAA
TCATACACTC

ACGCGTACGCGGCCGCTCGAGCAGAAAACATCTCAGAAGAGGATCTGGCAGCAAATGATATCCTGGATT
ACAAGGATGACGACGATAAGGTTTAA



[View online »](#)

Protein Sequence: >RC200086 protein sequence
Red=Cloning site Green=Tags(s)

MGLGNRRSMKSPPLVLAALVACIIVLGFNYWIASRSVDLQTRIMELEGRVRRAAAERGAVELKKNEFQ
 GELEKQREQLDKIQSSSHNFQLESVNKLQDEKAVLVNNITTTGERLIRVLQDQLKTLQRNYGRLQQDVLQF
 QKNQTNLERKFSYDLQSQINQMKEVKEQCEERIEEVTKKGNEAVASRDLENNDQRQQLQALSEPQRLQ
 AAGLPHTEVPQGGKGNVLSKSKSQTPAPSSSEVVLDSKRQVEKEETNEIQVVNEEPQRDRLPQEPGREQVVE
 DRPVGGRGFGGAGELGQTPQVQAALSVSQENPEMEGPERDQLVIPDGQEEEQEAAGEGRNQKLRGEDDY
 NMDENEAESETDKQAALAGNDRNIDVFNVEDQKRDTINLLDQREKRNHTL

TRTRPLEQKLISEEDLAANDILDYKDDDDKV

Chromatograms: https://cdn.origene.com/chromatograms/mk6388_h06.zip

Restriction Sites: SgfI-MluI

Cloning Scheme:



* The last codon before the Stop codon of the ORF

ACCN: NM_177937

ORF Size: 1200 bp

OTI Disclaimer: The molecular sequence of this clone aligns with the gene accession number as a point of reference only. However, individual transcript sequences of the same gene can differ through naturally occurring variations (e.g. polymorphisms), each with its own valid existence. This clone is substantially in agreement with the reference, but a complete review of all prevailing variants is recommended prior to use. [More info](#)

OTI Annotation: This clone was engineered to express the complete ORF with an expression tag. Expression varies depending on the nature of the gene.

Components: The ORF clone is ion-exchange column purified and shipped in a 2D barcoded Matrix tube containing 10ug of transfection-ready, dried plasmid DNA (reconstitute with 100 ul of water).

Reconstitution Method:

1. Centrifuge at 5,000xg for 5min.
2. Carefully open the tube and add 100ul of sterile water to dissolve the DNA.
3. Close the tube and incubate for 10 minutes at room temperature.
4. Briefly vortex the tube and then do a quick spin (less than 5000xg) to concentrate the liquid at the bottom.
5. Store the suspended plasmid at -20°C. The DNA is stable for at least one year from date of shipping when stored at -20°C.

Note: Plasmids are not sterile. For experiments where strict sterility is required, filtration with 0.22um filter is required.

RefSeq: [NM_177937.2](#)

RefSeq Size: 3092 bp

RefSeq ORF: 1206 bp

Locus ID: 51280

UniProt ID: [Q8NBJ4](#)

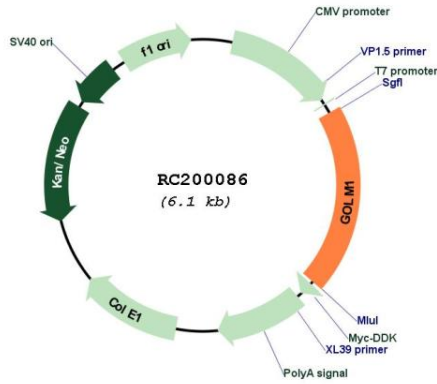
Cytogenetics: 9q21.33

Protein Families: Transmembrane

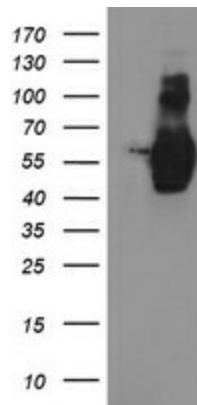
MW: 45.2 kDa

Gene Summary: The Golgi complex plays a key role in the sorting and modification of proteins exported from the endoplasmic reticulum. The protein encoded by this gene is a type II Golgi transmembrane protein. It processes proteins synthesized in the rough endoplasmic reticulum and assists in the transport of protein cargo through the Golgi apparatus. The expression of this gene has been observed to be upregulated in response to viral infection. Alternatively spliced transcript variants encoding the same protein have been described for this gene. [provided by RefSeq, Sep 2009]

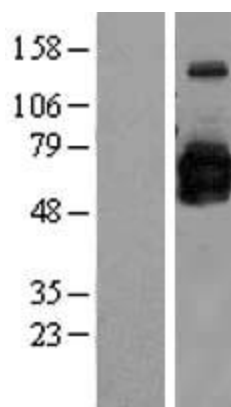
Product images:



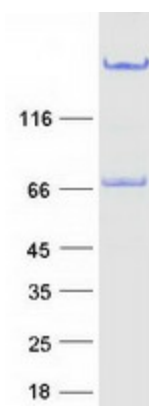
Circular map for RC200086



HEK293T cells were transfected with the pCMV6-ENTRY control (Cat# [PS100001], Left lane) or pCMV6-ENTRY GOLM1 (Cat# RC200086, Right lane) cDNA for 48 hrs and lysed. Equivalent amounts of cell lysates (5 ug per lane) were separated by SDS-PAGE and immunoblotted with anti-GOLM1(Cat# [TA504112]). Positive lysates [LY406091] (100ug) and [LC406091] (20ug) can be purchased separately from OriGene.



Western blot validation of overexpression lysate (Cat# [LY406091]) using anti-DDK antibody (Cat# [TA50011-100]). Left: Cell lysates from untransfected HEK293T cells; Right: Cell lysates from HEK293T cells transfected with RC200086 using transfection reagent MegaTran 2.0 (Cat# [TT210002]).



Coomassie blue staining of purified GOLM1 protein (Cat# [TP300086]). The protein was produced from HEK293T cells transfected with GOLM1 cDNA clone (Cat# RC200086) using MegaTran 2.0 (Cat# [TT210002]).