

Product datasheet for **RC200085**

CINP (NM_032630) Human Tagged ORF Clone

Product data:

Product Type: Expression Plasmids
Product Name: CINP (NM_032630) Human Tagged ORF Clone
Tag: Myc-DDK
Symbol: CINP
Mammalian Cell Selection: Neomycin
Vector: pCMV6-Entry (PS100001)
E. coli Selection: Kanamycin (25 ug/mL)
ORF Nucleotide Sequence: >RC200085 ORF sequence
 Red=Cloning site Blue=ORF Green=Tags(s)

TTTTGTAATACGACTCACTATAGGGCGGCCGGAATTCGTCGACTGGATCCGGTACCGAGGAGATCTGCC
 GCC**CGATCGCC**

ATGGAAGCAAAGACTCTTGGAACTGTAACGCCAGAAAACCTGTCTTATCTGTCAGTGAAGAAAAATTA
 AGGACAATGCGGCTGATTGGCACAATTTAATCCTGAAGTGGAAACCCCTCAATGATGCAGGTTTTACCAC
 TGCAAATAATATTGCCAATTGAAAATCAGTTTATTGAATAAAGACAAGATAGAAGTACAGCAGCAGC
 CCAGCCTCGAAGGAAAAATGAAGAAAAGGTGTGTCTGGAATATAACGAGGAAGTGGAGAAGCTGTGTGAGG
 AACTGCAGGCCACCTTGGATGGTTGACCAAAAATACAGGTGAAAATGAAAAGCTGTCTCACTACCAA
 GGAATTTGTGAACTAGAAAACCTACCATTATGGGGAGGAGAGTAAACGACCCCTCTGTTCCACAGTGG
 CCTACAACCCATTTCTATGAGGTTTCGCATAAGCTCTTGAGATGTACAGGAAGGAGCTGCTCCTGAAGC
 GCACGGTGGCCAAGGAGCTTGCCACACCGGGATCCCGACCTCACCTGAGCTACCTGTCCATGTGGCT
 GCACCAGCCCTATGTGGAGAGCGACAGTAGGCTGCATCTGGAGAGCATGCTGCTGGAGACAGGCCACCGA
 GCTCTC

ACGCGTACGCGGCCGCTCGAGCAGAAAACCTCATCTCAGAAGAGGATCTGGCAGCAAATGATATCCTGGATT
 ACAAGGATGACGACGATAAGGTTTAA

Protein Sequence: >RC200085 protein sequence
 Red=Cloning site Green=Tags(s)

MEAKTLGTVTPRKPVLSVSARKIKDNAADWHNLILKWETLNDAGFTTANNIANLKISSLNPKDKIELDSSS
 PASKENEKVCLEYNEELEKLCLELQATLDGLTKIQVKMEKLSSTTKGICELENYHYGEESKRPLFHTW
 PTHFYEVSHKLLEMYRKELLLKRTVAKELAHGDPDLTSLYLSMWLHQPYVESDSRHLHLESMLLETGHR
 AL

TRTRPLEQKLISEEDLAANDILDYKDDDDKV



[View online »](#)

Chromatograms: https://cdn.origene.com/chromatograms/mk6128_h09.zip

Restriction Sites: SgfI-MluI

Cloning Scheme:



ACCN: NM_032630

ORF Size: 636 bp

OTI Disclaimer: The molecular sequence of this clone aligns with the gene accession number as a point of reference only. However, individual transcript sequences of the same gene can differ through naturally occurring variations (e.g. polymorphisms), each with its own valid existence. This clone is substantially in agreement with the reference, but a complete review of all prevailing variants is recommended prior to use. [More info](#)

OTI Annotation: This clone was engineered to express the complete ORF with an expression tag. Expression varies depending on the nature of the gene.

Components: The ORF clone is ion-exchange column purified and shipped in a 2D barcoded Matrix tube containing 10ug of transfection-ready, dried plasmid DNA (reconstitute with 100 ul of water).

Reconstitution Method:

1. Centrifuge at 5,000xg for 5min.
2. Carefully open the tube and add 100ul of sterile water to dissolve the DNA.
3. Close the tube and incubate for 10 minutes at room temperature.
4. Briefly vortex the tube and then do a quick spin (less than 5000xg) to concentrate the liquid at the bottom.
5. Store the suspended plasmid at -20°C. The DNA is stable for at least one year from date of shipping when stored at -20°C.

RefSeq: [NM_032630.1](#)

RefSeq Size: 996 bp

RefSeq ORF: 639 bp

Locus ID: 51550

UniProt ID: [Q9BW66](#)

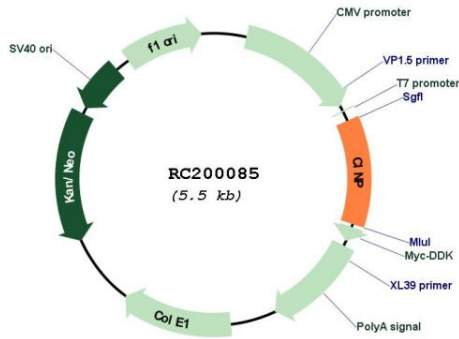
Cytogenetics: 14q32.31

Protein Families: Druggable Genome

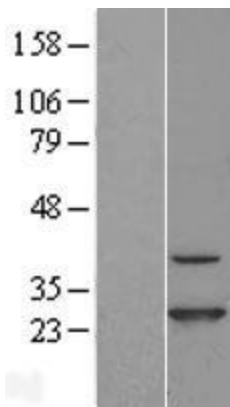
MW: 24.3 kDa

Gene Summary: The protein encoded by this gene is reported to be a component of the DNA replication complex as well as a genome-maintenance protein. It may interact with proteins important for replication initiation and has been shown to bind chromatin at the G1 phase of the cell cycle and dissociate from chromatin with replication initiation. It may also serve to regulate checkpoint signaling as part of the DNA damage response. Alternative splicing results in multiple transcript variants. [provided by RefSeq, Feb 2016]

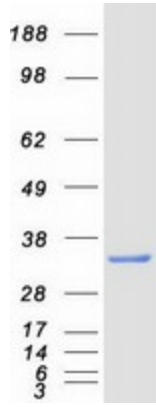
Product images:



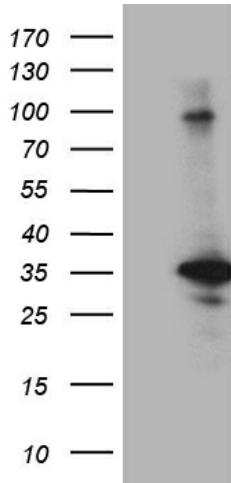
Circular map for RC200085



Western blot validation of overexpression lysate (Cat# [LY403179]) using anti-DDK antibody (Cat# [TA50011-100]). Left: Cell lysates from untransfected HEK293T cells; Right: Cell lysates from HEK293T cells transfected with RC200085 using transfection reagent MegaTran 2.0 (Cat# [TT210002]).



Coomassie blue staining of purified CINP protein (Cat# [TP300085]). The protein was produced from HEK293T cells transfected with CINP cDNA clone (Cat# RC200085) using MegaTran 2.0 (Cat# [TT210002]).



HEK293T cells were transfected with the pCMV6-ENTRY control (Cat# [PS100001], Left lane) or pCMV6-ENTRY CINP (Cat# RC200085, Right lane) cDNA for 48 hrs and lysed. Equivalent amounts of cell lysates (5 ug per lane) were separated by SDS-PAGE and immunoblotted with anti-CINP antibody (Cat# [TA812290]). Positive lysates [LY403179] (100ug) and [LC403179] (20ug) can be purchased separately from OriGene.