



**Protein Sequence:** >RC200080 protein sequence  
Red=Cloning site Green=Tags(s)

MSLCEDMLLCNYRKCRIKLSGYAWVTACSHIFCDQHSGGEFSRSPAICPACNSTLSGKLDIVRTELSPE  
 EYKAMVLAGLRPEIVLDISSRALAFWYQVHQRLEYQYNFKAEGHLKQMEKIYTOQQIQSKDVELTSMK  
 GEVTSMKKVL EEYKKKFSDISEKLMERNRQYQKLQGLYDSLRLRNITIANHEGTLEPSMIAQSGVLGFPL  
 GNNSKFPLDNTPVNRNRGDGDGFQFRPFFAGSPTAPEPSNSFFSFVSPSRELEQQQVSSRAFKVKRI

TRTRPLEQKLISEEDLAANDILDYKDDDDKV

**Chromatograms:** [https://cdn.origene.com/chromatograms/mk6396\\_a10.zip](https://cdn.origene.com/chromatograms/mk6396_a10.zip)

**Restriction Sites:** SgfI-MluI

**Cloning Scheme:**

Cloning sites used for ORF Shuttling:



\* The last codon before the Stop codon of the ORF

**ACCN:** NM\_182851

**ORF Size:** 831 bp

**OTI Disclaimer:** The molecular sequence of this clone aligns with the gene accession number as a point of reference only. However, individual transcript sequences of the same gene can differ through naturally occurring variations (e.g. polymorphisms), each with its own valid existence. This clone is substantially in agreement with the reference, but a complete review of all prevailing variants is recommended prior to use. [More info](#)

**OTI Annotation:** This clone was engineered to express the complete ORF with an expression tag. Expression varies depending on the nature of the gene.

**Components:** The ORF clone is ion-exchange column purified and shipped in a 2D barcoded Matrix tube containing 10ug of transfection-ready, dried plasmid DNA (reconstitute with 100 ul of water).

**Reconstitution Method:**

1. Centrifuge at 5,000xg for 5min.
2. Carefully open the tube and add 100ul of sterile water to dissolve the DNA.
3. Close the tube and incubate for 10 minutes at room temperature.
4. Briefly vortex the tube and then do a quick spin (less than 5000xg) to concentrate the liquid at the bottom.
5. Store the suspended plasmid at -20°C. The DNA is stable for at least one year from date of shipping when stored at -20°C.

**RefSeq:** [NM\\_182851.1](#), [NP\\_878271.1](#)

**RefSeq Size:** 1681 bp

**RefSeq ORF:** 833 bp

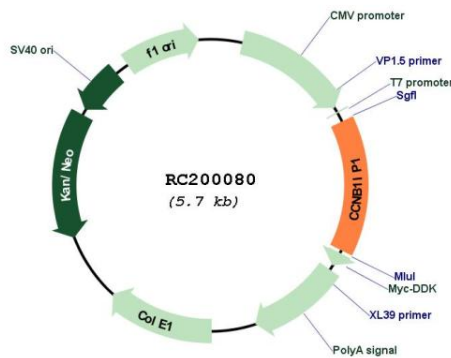
**Locus ID:** 57820

**Cytogenetics:** 14q11.2

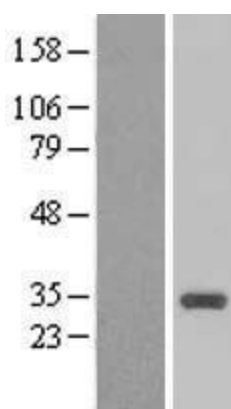
**MW:** 31.5 kDa

**Gene Summary:** HEI10 is a member of the E3 ubiquitin ligase family and functions in progression of the cell cycle through G(2)/M.[supplied by OMIM, Apr 2004]

**Product images:**



Circular map for RC200080



Western blot validation of overexpression lysate (Cat# [LY405384]) using anti-DDK antibody (Cat# [TA50011-100]). Left: Cell lysates from untransfected HEK293T cells; Right: Cell lysates from HEK293T cells transfected with [RC214140] using transfection reagent MegaTran 2.0 (Cat# [TT210002]).