

## Product datasheet for **RC200077**

### WDR12 (NM\_018256) Human Tagged ORF Clone

#### Product data:

Product Type:	Expression Plasmids
Product Name:	WDR12 (NM_018256) Human Tagged ORF Clone
Tag:	Myc-DDK
Symbol:	WDR12
Synonyms:	YTM1
Mammalian Cell Selection:	Neomycin
Vector:	pCMV6-Entry (PS100001)
E. coli Selection:	Kanamycin (25 ug/mL)



[View online »](#)

**ORF Nucleotide Sequence:**

>RC200077 ORF sequence  
 Red=Cloning site Blue=ORF Green=Tags(s)

TTTTGTAATACGACTCACTATAGGGCGGCCGGAATTCGTCGACTGGATCCGGTACCGAGGAGATCTGCC  
 GCC**CGCATCGCC**

ATGGCTCAGCTCCAACACGCTTCTACACTGATAACAAGAAATATGCCGTAGATGATGTTCCCTTCTCAA  
 TCCTGCTGCCTCTGAAATTGCCGACCTTAGTAACATCATCAATAAACTACTAAAGGACAAAAATGAGTT  
 CCACAAACATGTGGAGTTTGATTTCCCTTATTAAGGGCCAGTTTCTGCGAATGCCCTTGGACAAACACATG  
 GAAATGGAGAACATCTCATCAGAAGAAGTTGTGGAAATAGAATACGTGGAGAAGTATACTGCACCCACAGC  
 CAGAGCAATGCATGTTCCATGATGACTGGATCAGTTCAATTAAGGGGCAGAGGAATGGATCTTGACTGG  
 TTCTTATGATAAGACTTCTCGGATCTGGTCTTGGAAAGGAAAGTCAATAATGACAATTGTGGACATACG  
 GATGTTGTAAGATGTGGCCTGGGTGAAAAAGATAGTTTGCCTGCTTATTATTGAGTGCTTCTATGG  
 ATCAGACTATTCTTATGGGAGTGGAAATGTAGAGAGAAACAAAGTAAAGCCCTACACTGCTGTAGAGG  
 TCATGCTGGAAGTGTAGATTCTATAGCTGTTGATGGCTCAGGAATAAATTTGCAGTGGCTCCTGGGAT  
 AAGATGCTAAAGATCTGGTCTACAGTCCCTACAGATGAAGAAGATGAAATGGAGGAGTCCACAAATCGAC  
 CAAGAAAGAAACAGAAGACAGAACAGATTGGGACTAACAAGGACTCCCATAGTGACCTCTCTGGCCACAT  
 GGAGGCAGTTTCCCTCAGTTCTGTGGTCAGATGCTGAAGAAATCTGCAGTGCATCTTGGGACCATAACAAT  
 AGAGTGTGGGATGTTGAGTCTGGCAGTCTTAAGTCAACTTTGACAGGAAATAAAGTGTAAATTGATTT  
 CCTATTCTCCACTTTGTAACGTTTAGCATCTGGAAGCACAGATAGGCATATCAGACTGTGGGATCCCCG  
 AACTAAAGATGGTCTTTGGTGTGCTGTCCTAACGTCACATACTGGTGGGTGACATCAGTAAATGG  
 TCTCCTACCCATGAACAGCAGCTGATTTAGGATCTTTAGATAACATTGTTAAGCTGTGGGATACAAGAA  
 GTTGTAAAGGCTCCTCTATGATCTGGCTGCTCATGAAGACAAAGTTCTGAGTGTAGACTGGACAGACAC  
 AGGGCTACTTCTGAGTGGAGGAGCAGACAATAAATTGTATTCTACAGATATTCACCTACCACTCCCAT  
 GTTGGGGCA

**ACGCGT**ACGCGGCCGCTCGAGCAGAACTCATCTCAGAAGAGGATCTGGCAGCAATGATATCCTGGATT  
 ACAAGGATGACGACGATAAGGTTTAA

**Protein Sequence:**

>RC200077 protein sequence  
 Red=Cloning site Green=Tags(s)

MAQLQTRFYTDNKKYAVDDVPPFIPAASEIADLSNIINKLLKDKNEFHKHVEFDFLIKGQFLRMPLDKHM  
 EMENISSEEVVEIEYVEKYTAPQPEQCMFHDDWISSIKGAEWILTGSYDKTSRIWSLEGKSIMTIVGHT  
 DVVKDVAWVKKDSL SCLLL SASMDQTILLWEWNVERNKV KALHCCRGHAGSVDSIAVDGSGTKFCSGSWD  
 KMLKIWSTVPTDEEDEMEESTNRPRKKQKTEQLGLTRTPIVTL SGHMEAVSSVLWSDAEEIC SASWDHTI  
 RVWDVESGSLKSTLTGNKVFNCISYSPLCKRLASGSTRHIRLWDPRTKDGSLVLSLTSHTGWVTSVKW  
 SPTHEQQLISGSLDNIVKLWDRSCKAPLYDLAAHEDKVL SVDWDTGLLLSGGADNKLYSYRYSPTTSH  
 VGA

**TR**TRPLEQKLISEEDLAANDILDYKDDDDKV

**Chromatograms:**

[https://cdn.origene.com/chromatograms/mk6406\\_f10.zip](https://cdn.origene.com/chromatograms/mk6406_f10.zip)

**Restriction Sites:**

Sgfl-Mlul

**Cloning Scheme:**


**ACCN:** NM\_018256

**ORF Size:** 1269 bp

**OTI Disclaimer:** The molecular sequence of this clone aligns with the gene accession number as a point of reference only. However, individual transcript sequences of the same gene can differ through naturally occurring variations (e.g. polymorphisms), each with its own valid existence. This clone is substantially in agreement with the reference, but a complete review of all prevailing variants is recommended prior to use. [More info](#)

**OTI Annotation:** This clone was engineered to express the complete ORF with an expression tag. Expression varies depending on the nature of the gene.

**Components:** The ORF clone is ion-exchange column purified and shipped in a 2D barcoded Matrix tube containing 10ug of transfection-ready, dried plasmid DNA (reconstitute with 100 ul of water).

- Reconstitution Method:**
1. Centrifuge at 5,000xg for 5min.
  2. Carefully open the tube and add 100ul of sterile water to dissolve the DNA.
  3. Close the tube and incubate for 10 minutes at room temperature.
  4. Briefly vortex the tube and then do a quick spin (less than 5000xg) to concentrate the liquid at the bottom.
  5. Store the suspended plasmid at -20°C. The DNA is stable for at least one year from date of shipping when stored at -20°C.

**RefSeq:** [NM\\_018256.4](#)

**RefSeq Size:** 2299 bp

**RefSeq ORF:** 1272 bp

**Locus ID:** 55759

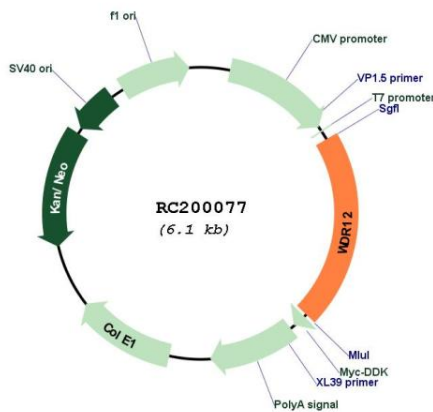
**UniProt ID:** [Q9GZL7](#)

**Cytogenetics:** 2q33.2

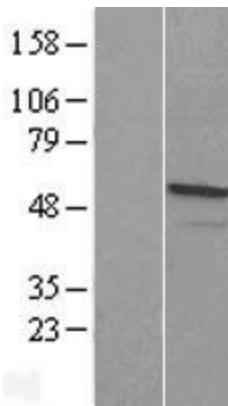
**Domains:** WD40  
**MW:** 47.7 kDa

**Gene Summary:** This gene encodes a member of the WD repeat protein family. WD repeats are minimally conserved regions of approximately 40 amino acids typically bracketed by gly-his and trp-asp (GH-WD), which may facilitate formation of heterotrimeric or multiprotein complexes. Members of this family are involved in a variety of cellular processes, including cell cycle progression, signal transduction, apoptosis, and gene regulation. This protein is highly similar to the mouse WD repeat domain 12 protein at the amino acid level. The protein encoded by this gene is a component of a nucleolar protein complex that affects maturation of the large ribosomal subunit.[provided by RefSeq, Dec 2008]

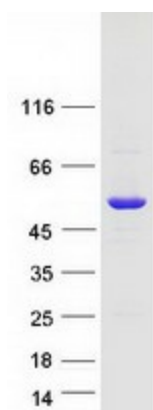
**Product images:**



Circular map for RC200077



Western blot validation of overexpression lysate (Cat# [LY413195]) using anti-DDK antibody (Cat# [TA50011-100]). Left: Cell lysates from untransfected HEK293T cells; Right: Cell lysates from HEK293T cells transfected with RC200077 using transfection reagent MegaTran 2.0 (Cat# [TT210002]).



Coomassie blue staining of purified WDR12 protein (Cat# [TP300077]). The protein was produced from HEK293T cells transfected with WDR12 cDNA clone (Cat# RC200077) using MegaTran 2.0 (Cat# [TT210002]).