

## Product datasheet for **RC200074**

### SWAP70 (NM\_015055) Human Tagged ORF Clone

#### Product data:

Product Type:	Expression Plasmids
Product Name:	SWAP70 (NM_015055) Human Tagged ORF Clone
Tag:	Myc-DDK
Symbol:	SWAP70
Synonyms:	HSPC321; SWAP-70
Vector:	pCMV6-Entry (PS100001)
E. coli Selection:	Kanamycin (25 ug/mL)
Cell Selection:	Neomycin



[View online »](#)

**ORF Nucleotide Sequence:**

>RC200074 ORF sequence  
 Red=Cloning site Blue=ORF Green=Tags(s)

TTTTGTAATACGACTCACTATAGGGCGGCCGGGAATTCGTCGACTGGATCCGGTACCGAGGAGATCTGCC  
 GCC**CGGATCGCC**

ATGGGGAGCTTGAAGGAGGAGCTGCTCAAAGCCATCTGGCAGCCTTACCCGACTCGACCAGGACCACA  
 CGGCAAGGTCTCCAAGTCCCAGCTCAAGTCTTTCCATAACCTGTGCACGGTCTGAAGTTCTCA  
 TGACCCAGTTGCCCTTGAAGAGCACTTCAGGGATGATGATGAGGGTCCAGTGTCCAACCAGGGCTACATG  
 CCTTATTTAAACAGGTTCACTTTGGAAAAGTCCAAGACAACCTTGACAAGATTGAATCAATAGGATGT  
 GTTGGACCCTCTGTGTCAAAAAAACCTCACAAGAATCCCTGCTCATTACAGAAGAAGATGCATTTAA  
 AATATGGGTTATTTCACTTTTATCTGAGGACAAGTATCCATTAATTATTGTGTGAGAAGAGATTGAA  
 TACCTGCTTAAGAAGCTTACAGAAGCTATGGGAGGAGTTGGCAGCAAGAACAATTTGAACATTAAAA  
 TCAACTTTGATGACAGTAAAAATGGCCTTCTGCATGGGAACCTATTGAGCTTATTGAAATGGACAGTT  
 TAGCAAAGGCATGGACCGCAGACTGTGTCTATGGCAATTAATGAAGCTTTAATGAACCTATATTAGAT  
 GTGTTAAAGCAGGGTTACATGATGAAAAAGGGCCACAGACGGAAAACTGGACTGAAAGATGGTTTGTAC  
 TAAAACCAACATAATTTCTTACTATGTGAGTGAGGATCTGAAGGATAAGAAAGGAGACATTCTCTTGGA  
 TGAAAAATTGCTGTGTAGAGTCTTGCTGACAAAGATGGAAGAAATGCCTTTTTCTGTAATGTTTT  
 GATAAGACTTTTGAATCAGTGTTCAGATAAGAAGAAGAAACAGGAGTGGATTCAAGCCATTCTTCTA  
 CTATTCATCTGTTGAAGTGGGCAGCCCTCCACCACACAAAGAAGCCCGCCAGCGTCGGAAGAAGTCCG  
 GAAGAAGCAGCTGGCTGAACAAGAGGAAGTGGAGCGACAATGAAGGAACCCAGGCCCAACGAAAGC  
 AAGCAGCAGGAGCTGGAGGCCGTGCGGAAGAACTGGAGGAAGCAGCATCTCGTGCAGCAGAAGAGGAAA  
 AGAAACGCCTTCAGACTCAAGTGAACCTCAGGCCAGTTTCAAGCAGAGCTGGAAGAGAGAAGCTTAT  
 CAGACAGCAGATGGAAGAAGAGTGTCTCAAAAGTCTTGAAGTGAAGCAGTATTACAGCGAGTACGG  
 GAGCTGGAAGACATGTACCTAAAGCTGCAGGAGGCTCTTGAAGATGAGAGACAGGCCCGGAAGATGAAG  
 AGACAGTGCAGGAGCTTCAAGCCAGGTTGTTGGAGGAAGAGTCTTCAAGAGGGCTGAACTAGAAAAGTG  
 GCATTTGGAGCAGCAGCAGGCCATTAGACAACCGAGGCGGAGAAGCAGGAGTTGGAGAATCAGCGTGT  
 CTGAAGGAACAGGCCCTGCAGGAGGCCATGGAGCAGCTGGAGCAGCTTGAAGTGAACGGAAGCAAGCAC  
 TTGAGCAGTACGAGGAAGTTAAAAAGAAGCTGGAGATGGCAACTAATAAGACCAAGAGCTGGAAGGACAA  
 AGTGGCCCATCATGAAGGATTAATTCGACTGATAGAACCAGGTTCAAAGAACCCTCACCTGATCACTAAC  
 TGGGGACCTGCAGCTTCTACTGAGGCAGAACTTGAAGAGAGAGAAGAACTGGAAGAGAAAAAGACCA  
 CGGAG

**ACGCGT**ACGCGGCCGCTCGAGCAGAACTCATCTCAGAAGAGGATCTGGCAGCAAATGATATCCTGGATT  
 ACAAGGATGACGACGATAAGGTTTAA

**Protein Sequence:**

>RC200074 protein sequence  
 Red=Cloning site Green=Tags(s)

MGSLKEELLKAIWHAFTALDQDHSQKSKSQLKVL SHNLCTVLKVPHPVVALEEHFRDDDEGPVSNQGYM  
 PYLNRF ILEKVDNFDKIEFNRCWTLCKVKNLTKNPLLITEEDAFKIWWIFNFLSEDKYPLIIVSEEIE  
 YLLKLLTEAMGGWQEQEFHYKINFDDSKNGLSAWELIELIGNQFSKGMQRQTVSMINEVFNELLILD  
 VLKQGYMMKKGHRKNWTERWFLKPNII SYVSEDLKDKKGDILLDENCCVESLPDKDGKCLFLVKCF  
 DKTFEISASDKKKKQEWIQAIIHSTIHLKLGSPPHKEARQRREL RKKQLAEQEELERQMKELQAANES  
 KQEQLEAVRKKLEEAASRAAEKRLQTQVELQARFSTELEREKLI RQQMEEQVAQKSSELEQLQRVR  
 ELEDMYLKLQEALDERQARQDEETVRKLQARLLEEESSKRAELEKWHLEQQQA IQTTEAEKQELNQRV  
 LKEQALQEAMEQLELELERKQALEQYEEVKKLEMATNKTKSWKDKVAHHEGLIRLIEPGSKNPHLITN  
 WGPAAFTEAELEEREKNWKEKTTTE

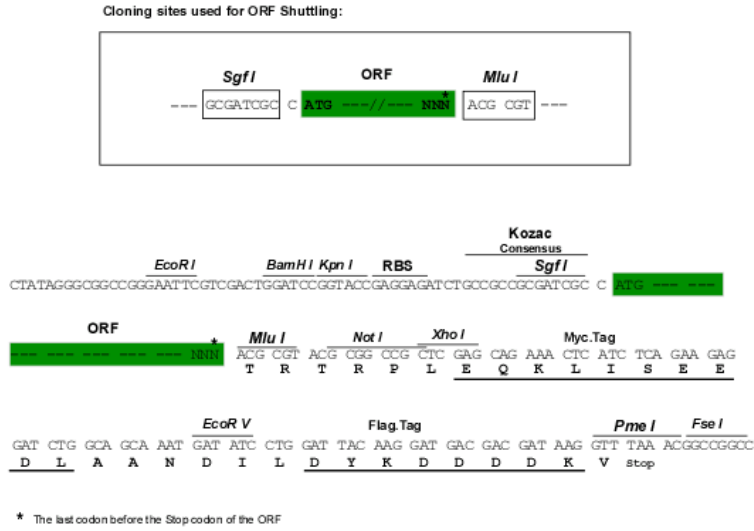
**TR**TRPLEQKLI SEEDLAANDILDYKDDDDKV

**Chromatograms:**

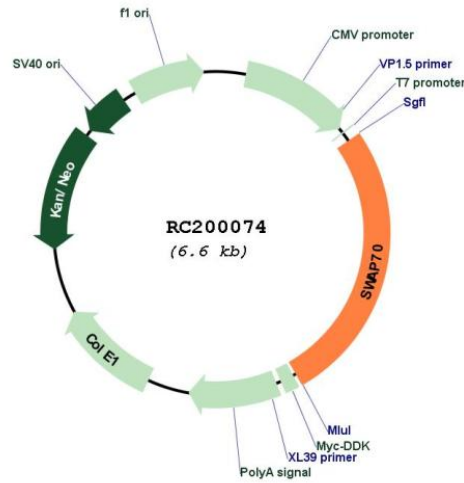
[https://cdn.origene.com/chromatograms/mk6238\\_h06.zip](https://cdn.origene.com/chromatograms/mk6238_h06.zip)

Restriction Sites: SgfI-MluI

Cloning Scheme:



Plasmid Map:

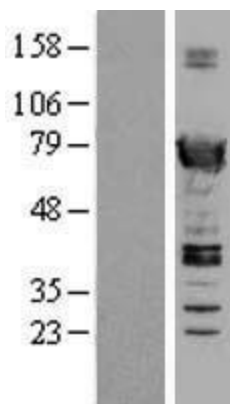


ACCN: NM\_015055

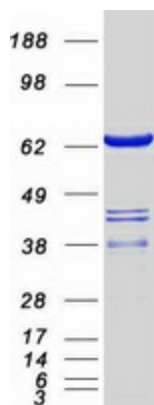
ORF Size: 1755 bp

<b>OTI Disclaimer:</b>	The molecular sequence of this clone aligns with the gene accession number as a point of reference only. However, individual transcript sequences of the same gene can differ through naturally occurring variations (e.g. polymorphisms), each with its own valid existence. This clone is substantially in agreement with the reference, but a complete review of all prevailing variants is recommended prior to use. <a href="#">More info</a>
<b>OTI Annotation:</b>	This clone was engineered to express the complete ORF with an expression tag. Expression varies depending on the nature of the gene.
<b>Components:</b>	The ORF clone is ion-exchange column purified and shipped in a 2D barcoded Matrix tube containing 10ug of transfection-ready, dried plasmid DNA (reconstitute with 100 ul of water).
<b>Reconstitution Method:</b>	<ol style="list-style-type: none"><li>1. Centrifuge at 5,000xg for 5min.</li><li>2. Carefully open the tube and add 100ul of sterile water to dissolve the DNA.</li><li>3. Close the tube and incubate for 10 minutes at room temperature.</li><li>4. Briefly vortex the tube and then do a quick spin (less than 5000xg) to concentrate the liquid at the bottom.</li><li>5. Store the suspended plasmid at -20°C. The DNA is stable for at least one year from date of shipping when stored at -20°C.</li></ol>
<b>RefSeq:</b>	<a href="#">NM_015055.4</a>
<b>RefSeq Size:</b>	4882 bp
<b>RefSeq ORF:</b>	1758 bp
<b>Locus ID:</b>	23075
<b>UniProt ID:</b>	<a href="#">Q9UH65</a>
<b>Cytogenetics:</b>	11p15.4
<b>MW:</b>	69 kDa
<b>Gene Summary:</b>	Phosphatidylinositol 3,4,5-trisphosphate-dependent guanine nucleotide exchange factor (GEF) which, independently of RAS, transduces signals from tyrosine kinase receptors to RAC. It also mediates signaling of membrane ruffling. Regulates the actin cytoskeleton as an effector or adapter protein in response to agonist stimulated phosphatidylinositol (3,4)-bisphosphate production and cell protrusion (By similarity).[UniProtKB/Swiss-Prot Function]

## Product images:



Western blot validation of overexpression lysate (Cat# [LY414823]) using anti-DDK antibody (Cat# [TA50011-100]). Left: Cell lysates from untransfected HEK293T cells; Right: Cell lysates from HEK293T cells transfected with RC200074 using transfection reagent MegaTran 2.0 (Cat# [TT210002]).



Coomassie blue staining of purified SWAP70 protein (Cat# [TP300074]). The protein was produced from HEK293T cells transfected with SWAP70 cDNA clone (Cat# RC200074) using MegaTran 2.0 (Cat# [TT210002]).