

Product datasheet for **RC200068**

CHMP2A (NM_014453) Human Tagged ORF Clone

Product data:

Product Type:	Expression Plasmids
Product Name:	CHMP2A (NM_014453) Human Tagged ORF Clone
Tag:	Myc-DDK
Symbol:	CHMP2A
Synonyms:	BC-2; BC2; CHMP2; VPS2; VPS2A
Mammalian Cell Selection:	Neomycin
Vector:	pCMV6-Entry (PS100001)
E. coli Selection:	Kanamycin (25 ug/mL)
ORF Nucleotide Sequence:	>RC200068 ORF sequence Red=Cloning site Blue=ORF Green=Tags(s)

TTTTGTAATACGACTCACTATAGGGCGCCGGGAATTCGTCGACTGGATCCGGTACCGAGGAGATCTGCC
GCC**CGATCGCC**

ATGGACCTATTGTTCTGGGCGCCGGAAGACGCCAGAGGAGCTACTGCGGCAGAACCAGAGGGCCCTGAACC
GTGCCATGCGGGAGCTGGACCGCGAGCGACAGAACTAGAGACCCAGGAGAAGAAAATCATTGCAGACAT
TAAGAAGATGGCCAAGCAAGGCCAGATGGATGCTGTTTCGCATCATGGCAAAGACTTGGTGCGCACCCGG
CGCTATGTGCGCAAGTTTGTATTGATGCGGGCCAACTCCAGGCTGTGTCCCTCAAGATCCAGACACTCA
AGTCCAACAACCTCGATGGCACAAGCCATGAAGGGTGTACCAAGGCCATGGGCACCATGAACAGACAGCT
GAAGTTGCCCCAGATCCAGAAGATCATGATGGAGTTTGAGCGGCAGGCAGAGATCATGGATATGAAGGAG
GAGATGATGAATGATGCCATTGATGATGCCATGGGTGATGAGGAAGATGAAGAGGAGAGTGATGCTGTGG
TGTCCCAGTTCTGGATGAGCTGGGACTTAGCCTAACAGATGAGCTGTGCGAACCTCCCCTCAACTGGGGG
CTCGCTTAGTGTGGCTGCTGGTGGGAAAAAAGCAGAGGCCCGCAGCCTCAGCCCTAGCTGATGCTGATGCA
GACCTGGAGGAACGGCTTAAGAACCTGCGGAGGGAC

ACGCGTACGCGGGCCGCTCGAGCAGAACTCATCTCAGAAGAGGATCTGGCAGCAAATGATATCCTGGATT
ACAAGGATGACGACGATAAGGTTTAA



[View online »](#)

Reconstitution Method:

1. Centrifuge at 5,000xg for 5min.
2. Carefully open the tube and add 100ul of sterile water to dissolve the DNA.
3. Close the tube and incubate for 10 minutes at room temperature.
4. Briefly vortex the tube and then do a quick spin (less than 5000xg) to concentrate the liquid at the bottom.
5. Store the suspended plasmid at -20°C. The DNA is stable for at least one year from date of shipping when stored at -20°C.

RefSeq: [NM_014453.4](#)

RefSeq Size: 941 bp

RefSeq ORF: 669 bp

Locus ID: 27243

UniProt ID: [O43633](#)

Cytogenetics: 19q13.43

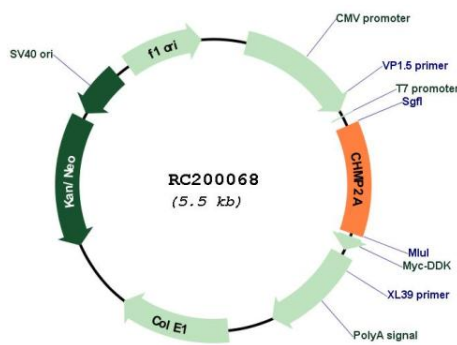
Domains: DUF279

Protein Pathways: Endocytosis

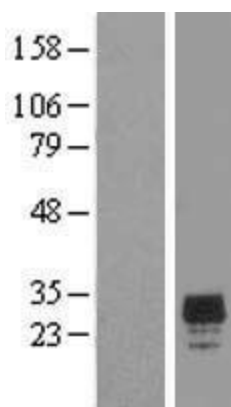
MW: 25.1 kDa

Gene Summary: CHMP2A belongs to the chromatin-modifying protein/charged multivesicular body protein (CHMP) family. These proteins are components of ESCRT-III (endosomal sorting complex required for transport III), a complex involved in degradation of surface receptor proteins and formation of endocytic multivesicular bodies (MVBs). Some CHMPs have both nuclear and cytoplasmic/vesicular distributions, and one such CHMP, CHMP1A (MIM 164010), is required for both MVB formation and regulation of cell cycle progression (Tsang et al., 2006 [PubMed 16730941]).[supplied by OMIM, Mar 2008]

Product images:



Circular map for RC200068



Western blot validation of overexpression lysate (Cat# [LY404873]) using anti-DDK antibody (Cat# [TA50011-100]). Left: Cell lysates from untransfected HEK293T cells; Right: Cell lysates from HEK293T cells transfected with [RC218563] using transfection reagent MegaTran 2.0 (Cat# [TT210002]).