

Product datasheet for **RC200062**

LMCD1 (NM_014583) Human Tagged ORF Clone

Product data:

Product Type:	Expression Plasmids
Product Name:	LMCD1 (NM_014583) Human Tagged ORF Clone
Tag:	Myc-DDK
Symbol:	LMCD1
Vector:	pCMV6-Entry (PS100001)
E. coli Selection:	Kanamycin (25 ug/mL)
Cell Selection:	Neomycin
ORF Nucleotide Sequence:	>RC200062 ORF sequence Red=Cloning site Blue=ORF Green=Tags(s)

TTTTGTAATACGACTCACTATAGGGCGGCCGGGAATTCGTCGACTGGATCCGGTACCGAGGAGATCTGCC
GCC**CGATCGC**C

ATGGCAAAGTGGCTAAGGACCTCAACCCAGGAGTAAAAAGATGTCCCTGGGCCAGCTGCAGTCAGCAA
GAGGTGTGGCATGTTGGGATGCAAGGGGACGTGTTCCGGCTTCGAGCCACATTCATGGAGAAAAATATG
CAAGCTTTGCAAATGCAGCCAAGAGGACCCTGCCTAACATCTGACCTAGAAGACGATCGGAAAAATTGGC
CGCTTGCTGATGGACTCCAAGTATCCACCCTCACTGCTCGGGTAAAGGCGGGGACGGCATCCGGATTT
ACAAGAGGAACCGGATGATCATGACCAACCCTATTGCTACTGGGAAAGATCCCACTTTTGACACCATCAC
CTACGAGTGGGCTCCCCCTGGAGTCAACCCAGAACTGGGACTGCAGTACATGGAGCTCATCCCCAAGGAG
AAGCAGCCAGTGACAGGCACAGAGGGTGCCTTTACCGCCGCCGAGCTCATGCACCAGCTCCCCATCT
ATGACCAGGATCCCTCGCGCTGCCGTGGACTTTTGGAGAATGAGTTGAACTGATGGAAGAATTTGTCAA
GCAATAAAGAGCGAGGCCCTCGCGTGGGAGAAGTGGCCCTCCCGGGCAGGGTGGCTTGCCCAAGGAG
GAGGGGAAGCAGCAGGAAAAGCCAGAGGGGCGAGAGACCCTGCTGCTACCACCAACGGCAGTCTCAGTG
ACCCGTCAAAGAAGTGAATACGTCTGCGAGCTCTGCAAGGGAGCGGCCCTCTGACAGCCCCGTGGT
CTACTCGACAGGGCAGGCTACAACAAGCAGTGGCACCCACCTGCTTTGTGTGTCCAAGTGTCTCCGAG
CCGCTGGTGGACCTCATCTACTTCTGGAAGGATGGTGCACCCTGGTGGCGCCGCACTACTGCGAGAGTC
TGCGGCCCCGGTGTCTCCGGCTGCGATGAGATAATTCGCTGAGGACTACCAGCGTGTGGAAGATCTGGC
CTGGCACCGAAAGCACTTTGTCTGTGAGGGTGTGAGCAGCTGCTGAGCGGCCGGCGTACATCGTCACC
AAGGGTCAGTCTGTGCCCAACTGCAGCAAGTCCAACGCTCC

ACGCGTACGCGGCCGCTCGAGCAGAACTCATCTCAGAAGAGGATCTGGCAGCAAATGATATCTGGATT
ACAAGGATGACGACGATAAGGTTTAA



[View online »](#)

Protein Sequence: >RC200062 protein sequence
 Red=Cloning site Green=Tags(s)

MAKVAKDLNPGVKKMSLGQLQSARGVACLGCKGTCSGFEPHSWRKICKSCKCSQEDHCLTSDLEDDRKIG
 RLLMDSKYSTLTARVKGGDGIRIYKRNRMIMTNPATGKDPTFDITTYEWAPPVGTQKLGQYMEIIPKE
 KQPVVTGTEGAFYRRRQLMHQLPIYDQDPSRCRGLLENELKLMEEFVKQYKSEALGVGEVALPGQGLPKE
 EGKQKEKPEGAETTAATTNGSLSDPSKEVEYVCELCKGAAPPDSPVVYS DRAGYNKQWHPTCFVCAKCS
 PLVDLIYFWKDGAPWCGRHYCESLRPRCSGCDEIIFAEDYQRVEDLAWHRKHVCEGCEQLLSGRAYIVT
 KGQLLCPTCSKSKRS

TRTRPLEQKLISEEDLAANDILDYKDDDDKV

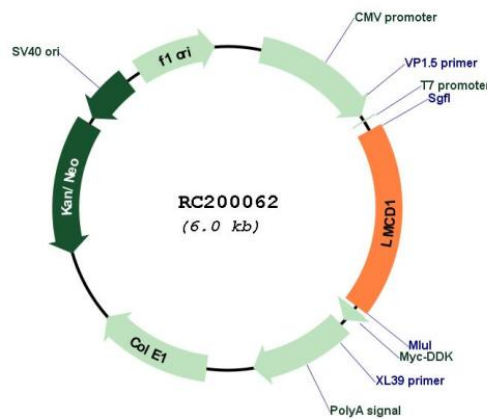
Chromatograms: https://cdn.origene.com/chromatograms/mk6178_g04.zip

Restriction Sites: Sgfl-MluI

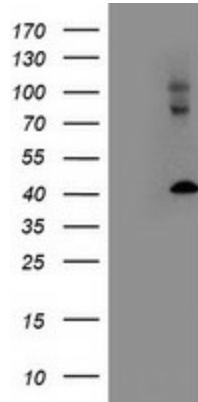
Cloning Scheme:



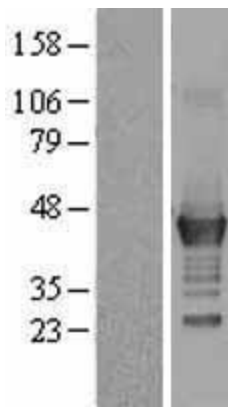
Plasmid Map:



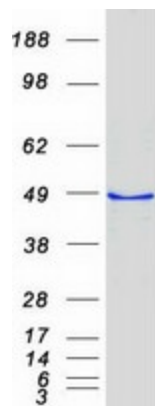
ACCN:	NM_014583
ORF Size:	1095 bp
OTI Disclaimer:	The molecular sequence of this clone aligns with the gene accession number as a point of reference only. However, individual transcript sequences of the same gene can differ through naturally occurring variations (e.g. polymorphisms), each with its own valid existence. This clone is substantially in agreement with the reference, but a complete review of all prevailing variants is recommended prior to use. More info
OTI Annotation:	This clone was engineered to express the complete ORF with an expression tag. Expression varies depending on the nature of the gene.
Components:	The ORF clone is ion-exchange column purified and shipped in a 2D barcoded Matrix tube containing 10ug of transfection-ready, dried plasmid DNA (reconstitute with 100 ul of water).
Reconstitution Method:	<ol style="list-style-type: none">1. Centrifuge at 5,000xg for 5min.2. Carefully open the tube and add 100ul of sterile water to dissolve the DNA.3. Close the tube and incubate for 10 minutes at room temperature.4. Briefly vortex the tube and then do a quick spin (less than 5000xg) to concentrate the liquid at the bottom.5. Store the suspended plasmid at -20°C. The DNA is stable for at least one year from date of shipping when stored at -20°C.
RefSeq:	NM_014583.4
RefSeq Size:	1757 bp
RefSeq ORF:	1098 bp
Locus ID:	29995
UniProt ID:	Q9NZU5
Cytogenetics:	3p25.3
Domains:	LIM
MW:	40.8 kDa
Gene Summary:	This gene encodes a member of the LIM-domain family of zinc finger proteins. The encoded protein contains an N-terminal cysteine-rich domain and two C-terminal LIM domains. The presence of LIM domains suggests involvement in protein-protein interactions. The protein may act as a co-regulator of transcription along with other transcription factors. Alternate splicing results in multiple transcript variants of this gene. [provided by RefSeq, May 2013]

Product images:


HEK293T cells were transfected with the pCMV6-ENTRY control (Cat# [PS100001], Left lane) or pCMV6-ENTRY LMCD1 (Cat# RC200062, Right lane) cDNA for 48 hrs and lysed. Equivalent amounts of cell lysates (5 ug per lane) were separated by SDS-PAGE and immunoblotted with anti-LMCD1 (Cat# [TA503139]). Positive lysates [LY402349] (100ug) and [LC402349] (20ug) can be purchased separately from OriGene.



Western blot validation of overexpression lysate (Cat# [LY402349]) using anti-DDK antibody (Cat# [TA50011-100]). Left: Cell lysates from untransfected HEK293T cells; Right: Cell lysates from HEK293T cells transfected with RC200062 using transfection reagent MegaTran 2.0 (Cat# [TT210002]).



Coomassie blue staining of purified LMCD1 protein (Cat# [TP300062]). The protein was produced from HEK293T cells transfected with LMCD1 cDNA clone (Cat# RC200062) using MegaTran 2.0 (Cat# [TT210002]).