

Product datasheet for **RC200056**

PPP2R1A (NM_014225) Human Tagged ORF Clone

Product data:

Product Type:	Expression Plasmids
Product Name:	PPP2R1A (NM_014225) Human Tagged ORF Clone
Tag:	Myc-DDK
Symbol:	PPP2R1A
Synonyms:	MRD36; PP2A-Aalpha; PP2AA; PP2AAALPHA; PR65A
Mammalian Cell Selection:	Neomycin
Vector:	pCMV6-Entry (PS100001)
E. coli Selection:	Kanamycin (25 ug/mL)



[View online »](#)

ORF Nucleotide Sequence:

>RC200056 ORF sequence
 Red=Cloning site Blue=ORF Green=Tags(s)

TTTTGTAATACGACTCACTATAGGGCGGCCGGGAATTCGTCGACTGGATCCGGTACCGAGGAGATCTGCC
 GCC**CGGATCGCC**

ATGGCGCGGCCGACGGCGAGCTCGCTGATACCCATCGCGGTGCTCATAGACGAACCTCCGAATGAGG
 ACGTTTCAGCTTCGCCTCAACAGCATCAAGAAGCTGTCCACCATCGCCTTGGCCCTTGGGGTTGAAAAGGAC
 CCGAAGTGAGCTTCTGCCTTTCCTTACAGATACCATCTATGATGAAGATGAGGTCCTCTGGCCCTGGCA
 GAACAGCTGGAAACCTTCACTACCCTGGTGGGAGGCCAGAGTACGTGCACTGCCTGCTGCCACCCTGG
 AGTCGCTGGCCACAGTGGAGGAGACAGTGGTGGGACAAGGCAGTGGAGTCTTACGGCCATCTCACA
 CGAGCACTCGCCCTCTGACCTGGAGGCGCACTTTGTGCCGCTAGTGAAGCGGCTGGCGGGCGGCGACTGG
 TTCACCTCCGCACTCGGCCTGCGGCCTTTCTCCGCTGCTACCCCGAGTGTCCAGTGTGTGAAGG
 CGGAACCTCGACAGTACTCCGGAACCTGTGCTCAGATGACACCCCATGGTGGCGGGGGCCGAGCCTC
 CAAGCTGGGGGAGTTTGCCAAGGTGCTGGAGCTGGACAACGTCAAGAGTGAGATCATCCCATGTTCTCC
 AACCTGGCCTCTGACGAGCAGGACTCGGTGCGGCTGCTGGCGGTGGAGGCGTGCCTGAACATCGCCAGC
 TTCTGCCCCAGGAGGATCTGGAGGCCCTGGTATGCCACTCTGCGCCAGGCCGCTGAAGACAAGTCTTG
 GCGCGTCCGCTACATGGTGGCTGACAAGTTCACAGAGCTCCAGAAAGCAGTGGGGCTGAGATCACCAAG
 ACAGACCTGGTCCCTGCCTTCCAGAACCTGATGAAAGACTGTGAGGCCGAGGTGAGGGCCGAGCCTCCC
 ACAAGGTCAAAGAGTTCTGTGAAAACCTCTCAGCTGACTGTGGGAGAATGTGATCATGTCCAGATCTT
 GCCCTGCATCAAGGAGCTGGTGTCCGATGCCAACCAACATGTCAAGTCTGCCCTGGCCTCAGTCATCATG
 GGTCTCTCTCCATCTTGGGCAAAGACAACACCATCGAGCACCTTTGCCCTCTTCTGGCTCAGCTGA
 AGGATGAGTGGCTGAGGTACGGCTGAACATCATCTAACCTGGACTGTGTGAACGAGGTGATTGGCAT
 CCGGCAGCTGTCCAGTCCCTGCTCCCTGCCATTGTGGAGCTGGCTGAGGACGCCAAGTGGCGGGTGGCG
 CTGGCCATCATTGAGTACATGCCCTCCTGGCTGGACAGCTGGGAGTGGAGTTCTTTGATGAGAACTTA
 ACTCCTTGTGCATGGCCTGGCTTGTGGATCATGTATATGCCATCCGCGAGGCAGCCACCAGCAACCTGAA
 GAAGCTAGTGGAAAAGTTTGGGAAGGAGTGGGCCATGCCACAATCATCCCAAGGTCTTGGCCATGTCC
 GGAGACCCCAACTACCTGCACCGCATGACTACGCTCTTCTGCATCAATGTGCTGTCTGAGGTCTGTGGC
 AGGACATACCACCAAGCACATGCTACCCAGGTTCTGCGCATGGCTGGGACCCGGTGGCCATGTCCG
 CTTCAATGTGGCCAAGTCTCTGCAGAAGATAGGGCCATCCTGGACAACAGCACCTTGCAGAGTGAAGTC
 AAGCCCATCTAGAGAAGCTGACCCAGGACCAGGATGTGGACGTCAAATACTTTGCCAGGAGGCTCTGA
 CTGTTCTGTCTCGCC

ACGCGTACGCGGCCGCTCGAGCAGAAACTCATCTCAGAAGAGGATCTGGCAGCAAATGATATCCTGGATT
 ACAAGGATGACGACGATAAGGTTTAA

Protein Sequence:

>RC200056 protein sequence
 Red=Cloning site Green=Tags(s)

MAAADGDDSLYPIAVLIDELRNEDVQLRLNSIKKLSIALALGVERTRSELLPFLTDIYDEDEVLLALA
 EQLGTFITL VGGPEYVHCLLPPLSLATVEETVVRDKAVESLRAISHEHSPDLEAHFVPLVKRLAGGDW
 FTSRTSACGLFSVCYPRVSSAVKAELRQYFRNLCSDDTPMVRRAAASKLGEFAKVLDELNDVKSEIIPMFS
 NLASDEQDSVRLLAVEACVNIAQLLPQEDLEALVMPTLRQAAEDKSWRVRYMVAADKFTLQKAVGPEITK
 TDLVPAFQNLMDCEAEVRAAASHKVKEFCENLSADCRENVIMSQILPCIKELVSDANQHVKVSALASVIM
 GLSPILGKDNTIEHLLPLFLAQLKDECPEVRLNIISNLDYNEVIGIRQLSQSLLPAIVELAEADAKWRVR
 LAIEYMPLLAGQLGVEFFDEKLNLSLMAWLVDHYAIREAATSNLKKLVEKFGKEWAHATIIPKVLAMS
 GDPNYLHRMTTLFCINVLSEVCGQDITTKHMLPTVLRMAGDPVANVRFVAKSLQKIGPILDNSTLQSEV
 KPILEKLTQDQDVVQYFAQEALTVLSLA

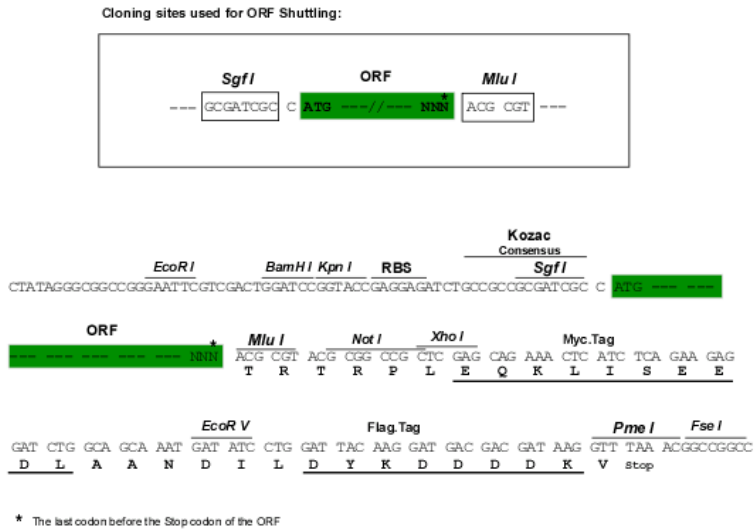
TRTRPLEQKLISEEDLAANDILDYKDDDDKV

Chromatograms:

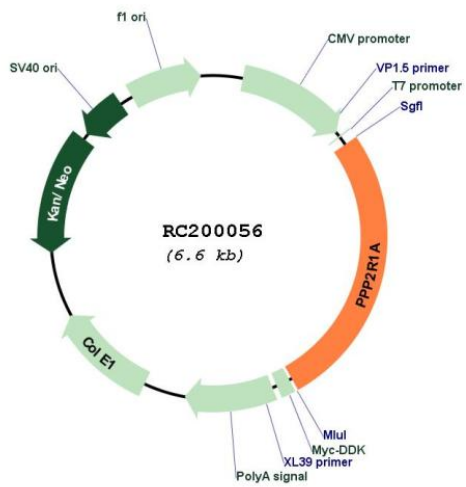
https://cdn.origene.com/chromatograms/mk6153_e06.zip

Restriction Sites: SgfI-MluI

Cloning Scheme:



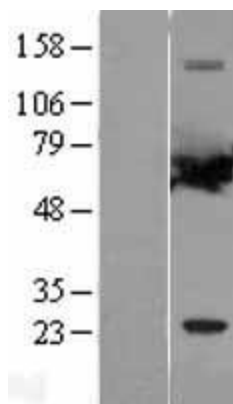
Plasmid Map:



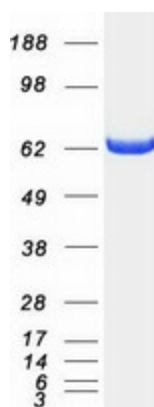
ACCN: NM_014225

ORF Size: 1767 bp

OTI Disclaimer:	The molecular sequence of this clone aligns with the gene accession number as a point of reference only. However, individual transcript sequences of the same gene can differ through naturally occurring variations (e.g. polymorphisms), each with its own valid existence. This clone is substantially in agreement with the reference, but a complete review of all prevailing variants is recommended prior to use. More info
OTI Annotation:	This clone was engineered to express the complete ORF with an expression tag. Expression varies depending on the nature of the gene.
Components:	The ORF clone is ion-exchange column purified and shipped in a 2D barcoded Matrix tube containing 10ug of transfection-ready, dried plasmid DNA (reconstitute with 100 ul of water).
Reconstitution Method:	<ol style="list-style-type: none"> 1. Centrifuge at 5,000xg for 5min. 2. Carefully open the tube and add 100ul of sterile water to dissolve the DNA. 3. Close the tube and incubate for 10 minutes at room temperature. 4. Briefly vortex the tube and then do a quick spin (less than 5000xg) to concentrate the liquid at the bottom. 5. Store the suspended plasmid at -20°C. The DNA is stable for at least one year from date of shipping when stored at -20°C.
RefSeq:	NM_014225.6
RefSeq Size:	2519 bp
RefSeq ORF:	1770 bp
Locus ID:	5518
UniProt ID:	P30153
Cytogenetics:	19q13.41
Domains:	HEAT, HEAT_PBS
Protein Families:	Druggable Genome, Phosphatase, Transcription Factors
Protein Pathways:	Long-term depression, Oocyte meiosis, TGF-beta signaling pathway, Tight junction, Wnt signaling pathway
MW:	65.3 kDa
Gene Summary:	This gene encodes a constant regulatory subunit of protein phosphatase 2. Protein phosphatase 2 is one of the four major Ser/Thr phosphatases, and it is implicated in the negative control of cell growth and division. It consists of a common heteromeric core enzyme, which is composed of a catalytic subunit and a constant regulatory subunit, that associates with a variety of regulatory subunits. The constant regulatory subunit A serves as a scaffolding molecule to coordinate the assembly of the catalytic subunit and a variable regulatory B subunit. This gene encodes an alpha isoform of the constant regulatory subunit A. Alternatively spliced transcript variants have been described. [provided by RefSeq, Apr 2010]

Product images:

Western blot validation of overexpression lysate (Cat# [LY402290]) using anti-DDK antibody (Cat# [TA50011-100]). Left: Cell lysates from untransfected HEK293T cells; Right: Cell lysates from HEK293T cells transfected with RC200056 using transfection reagent MegaTran 2.0 (Cat# [TT210002]).



Coomassie blue staining of purified PPP2R1A protein (Cat# [TP300056]). The protein was produced from HEK293T cells transfected with PPP2R1A cDNA clone (Cat# RC200056) using MegaTran 2.0 (Cat# [TT210002]).