

Product datasheet for **RC200055**

METTL11A (NTMT1) (NM_014064) Human Tagged ORF Clone

Product data:

Product Type:	Expression Plasmids
Product Name:	METTL11A (NTMT1) (NM_014064) Human Tagged ORF Clone
Tag:	Myc-DDK
Symbol:	METTL11A
Synonyms:	AD-003; C9orf32; HOMET1A; METTL11A; NRMT; NRMT1; NTM1A
Mammalian Cell Selection:	Neomycin
Vector:	pCMV6-Entry (PS100001)
E. coli Selection:	Kanamycin (25 ug/mL)
ORF Nucleotide Sequence:	>RC200055 ORF sequence Red=Cloning site Blue=ORF Green=Tags(s)

TTTTGTAATACGACTCACTATAGGGCGGCCGGAATTCGTCGACTGGATCCGGTACCGAGGAGATCTGCC
GCC**CGATCGCC**

ATGACGAGCGAGGTGATAGAAGACGAGAAGCAATTCTATTCCAAGGCCAAGACCTACTGGAACAAATCC
CACCCACGGTGGACGGCATGCTTGGGGGTATGGCCACATCTCCAGCATCGACATCAACAGCTCCCGGAA
GTTTCTGCAGAGGTTTTTGAGGGAAGGCCGAACAAGACAGGAACGTCTGTGCCCTGGACTGTGGAGCT
GGCATTGGGAGGATCACCAAGCGGCTGCTCCTGCCGTGTTGAGAGGTTGGATATGGTCGACATAACGG
AGGACTTCTGGTCAAGCCAAGACCTACCTGGGGGAGGAGGCAAGAGGTTGAGGAACACTTCTGTTG
TGGGCTCCAGGACTTACCCCGGAGCCGACTTACGACGTGATCTGGATCCAGTGGGTGATAGGCCAC
CTCACCGATCAGCACCTGGCCGAGTTCTGCGGCGCTGCAAGGGCAGCCTCCGCCCAACGGCATCATCG
TCATCAAAGACAACATGGCCAGGAGGGCGTGATTCTGGACGACGTGGACAGCAGCGTGTCCCGGGACCT
TGACGTGGTCCGAGGATCATCTGCAGTGCAGGCCTCAGCCTCCTGGCCGAGGAGGCAAGGAGAACCTC
CCCGATGAGATCTACCATGTCTATAGCTTTGCCCTGAGA

ACGCGTACGCGGGCGCTCGAGCAGAACTCATCTCAGAAGAGGATCTGGCAGCAAATGATATCCTGGATT
ACAAGGATGACGACGATAAGGTTTAA



[View online »](#)

Protein Sequence: >RC200055 protein sequence
 Red=Cloning site Green=Tags(s)

MTSEVIEDEKQFYSAKAKTYWKQIPPTVDGMLGGYGHISIDINSSRKFLQRFLREGPNKGTSCALDCGA
 GIGRITKRLLLPLFREVDMDITEDFLVQAKTYLGEEGKRVRYFCCLQDFTPEPDSYDVIWIQWVIGH
 LTDQHLAEFLRRCKGSLRPNGIIVIKDNMAQEGVILDDVDSSVCRDLDVVRRRIICSAGLSLLAEERQENL
 PDEIYHVVSFALR

TRTRPLEQKLISEEDLAANDILDYKDDDDKV

Chromatograms: https://cdn.origene.com/chromatograms/mk6385_g08.zip

Restriction Sites: SgfI-MluI

Cloning Scheme:

Cloning sites used for ORF Shuttling:



* The last codon before the Stop codon of the ORF

ACCN: NM_014064

ORF Size: 669 bp

OTI Disclaimer: The molecular sequence of this clone aligns with the gene accession number as a point of reference only. However, individual transcript sequences of the same gene can differ through naturally occurring variations (e.g. polymorphisms), each with its own valid existence. This clone is substantially in agreement with the reference, but a complete review of all prevailing variants is recommended prior to use. [More info](#)

OTI Annotation: This clone was engineered to express the complete ORF with an expression tag. Expression varies depending on the nature of the gene.

Components: The ORF clone is ion-exchange column purified and shipped in a 2D barcoded Matrix tube containing 10ug of transfection-ready, dried plasmid DNA (reconstitute with 100 ul of water).

Reconstitution Method:

1. Centrifuge at 5,000xg for 5min.
2. Carefully open the tube and add 100ul of sterile water to dissolve the DNA.
3. Close the tube and incubate for 10 minutes at room temperature.
4. Briefly vortex the tube and then do a quick spin (less than 5000xg) to concentrate the liquid at the bottom.
5. Store the suspended plasmid at -20°C. The DNA is stable for at least one year from date of shipping when stored at -20°C.

RefSeq: [NM_014064.4](#)

RefSeq Size: 1536 bp

RefSeq ORF: 672 bp

Locus ID: 28989

UniProt ID: [Q9BV86](#)

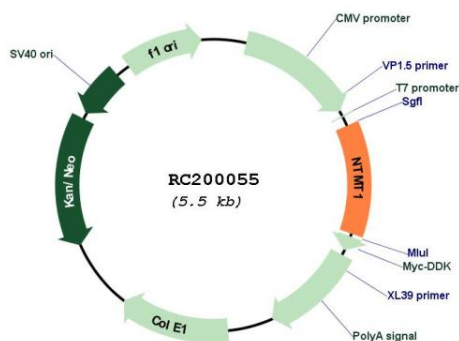
Cytogenetics: 9q34.11

Protein Families: Druggable Genome

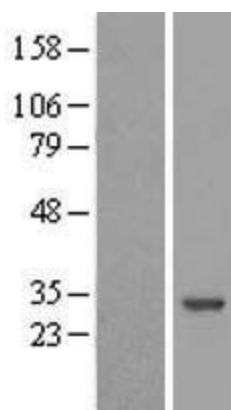
MW: 25.4 kDa

Gene Summary: The METTL11A gene encodes an N-terminal methyltransferase for the RAN (MIM 601179) guanine nucleotide exchange factor regulator of chromosome condensation 1 (RCC1; MIM 179710). METTL11A enzyme alpha-N-methylates other protein targets such as SET (MIM 600960) and RB (MIM 180200).[supplied by OMIM, Nov 2010]

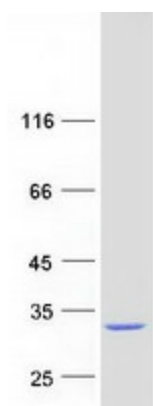
Product images:



Circular map for RC200055



Western blot validation of overexpression lysate (Cat# [LY415489]) using anti-DDK antibody (Cat# [TA50011-100]). Left: Cell lysates from untransfected HEK293T cells; Right: Cell lysates from HEK293T cells transfected with RC200055 using transfection reagent MegaTran 2.0 (Cat# [TT210002]).



Coomassie blue staining of purified NTMT1 protein (Cat# [TP300055]). The protein was produced from HEK293T cells transfected with NTMT1 cDNA clone (Cat# RC200055) using MegaTran 2.0 (Cat# [TT210002]).