

Product datasheet for **RC200054**

RPL36 (NM_015414) Human Tagged ORF Clone

Product data:

Product Type: Expression Plasmids
Product Name: RPL36 (NM_015414) Human Tagged ORF Clone
Tag: Myc-DDK
Symbol: RPL36
Synonyms: L36
Mammalian Cell Selection: Neomycin
Vector: pCMV6-Entry (PS100001)
E. coli Selection: Kanamycin (25 ug/mL)
ORF Nucleotide Sequence: >RC200054 ORF sequence
Red=Cloning site Blue=ORF Green=Tags(s)

TTTTGTAATACGACTCACTATAGGGCGGCCGGAATTCGTCGACTGGATCCGGTACCGAGGAGATCTGCC
GCC**CGATCGCC**

ATGGCCCTACGCTACCCTATGGCCGTGGGCCTCAACAAGGGCCACAAAGTGACCAAGAACGTGAGCAAGC
CCAGGCACAGCCGACGCCGCGGGCGTCTGACCAAAACACACCAAGTTCGTGCGGGACATGATTCGGGAGGT
GTGTGGCTTTGCCCGTACGAGCGGCGGCCATGGAGTTACTGAAGGTCTCCAAGGACAAACGGGCCCTC
AAATTTATCAAGAAAAGGGTGGGACGCACATCCGCGCCAAGAGGAAGCGGGAGGAGCTGAGCAACGTAC
TGCCGCCATGAGGAAAGCTGCTCCAAGAAAGAC

ACGCGTACGCGGCCGCTCGAGCAGAAACTCATCTCAGAAGAGGATCTGGCAGCAAATGATATCCTGGATT
ACAAGGATGACGACGATAAGGTTTAA

Protein Sequence: >RC200054 protein sequence
Red=Cloning site Green=Tags(s)
MALRYPMAVGLNKGHKVTKNVSKPRHSRRRLTKHTKFVRDMIREVCGFAPYERRAMELLKVSQDKRAL
KFIKRVRGTHIRAKRKREELSNVLAAMRKAANKD

TRTRPLEQKLISEEDLAANDILDYKDDDDKV

Chromatograms: https://cdn.origene.com/chromatograms/mk6407_b06.zip

Restriction Sites: SgfI-MluI



[View online »](#)

Cloning Scheme:


ACCN: NM_015414

ORF Size: 315 bp

OTI Disclaimer: The molecular sequence of this clone aligns with the gene accession number as a point of reference only. However, individual transcript sequences of the same gene can differ through naturally occurring variations (e.g. polymorphisms), each with its own valid existence. This clone is substantially in agreement with the reference, but a complete review of all prevailing variants is recommended prior to use. [More info](#)

OTI Annotation: This clone was engineered to express the complete ORF with an expression tag. Expression varies depending on the nature of the gene.

Components: The ORF clone is ion-exchange column purified and shipped in a 2D barcoded Matrix tube containing 10ug of transfection-ready, dried plasmid DNA (reconstitute with 100 ul of water).

- Reconstitution Method:**
1. Centrifuge at 5,000xg for 5min.
 2. Carefully open the tube and add 100ul of sterile water to dissolve the DNA.
 3. Close the tube and incubate for 10 minutes at room temperature.
 4. Briefly vortex the tube and then do a quick spin (less than 5000xg) to concentrate the liquid at the bottom.
 5. Store the suspended plasmid at -20°C. The DNA is stable for at least one year from date of shipping when stored at -20°C.

RefSeq: [NM_015414.4](#)

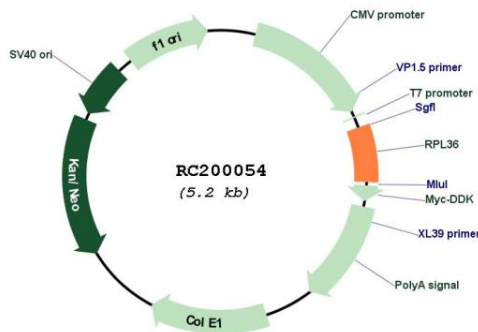
RefSeq Size: 557 bp

RefSeq ORF: 318 bp

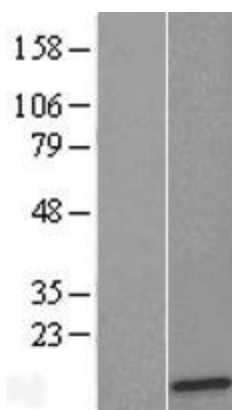
Locus ID: 25873

UniProt ID:	Q9Y3U8
Cytogenetics:	19p13.3
Domains:	Ribosomal_L36e
Protein Families:	Druggable Genome
Protein Pathways:	Ribosome
MW:	12.3 kDa
Gene Summary:	Ribosomes, the organelles that catalyze protein synthesis, consist of a small 40S subunit and a large 60S subunit. Together these subunits are composed of 4 RNA species and approximately 80 structurally distinct proteins. This gene encodes a ribosomal protein that is a component of the 60S subunit. The protein belongs to the L36E family of ribosomal proteins. It is located in the cytoplasm. Transcript variants derived from alternative splicing exist; they encode the same protein. As is typical for genes encoding ribosomal proteins, there are multiple processed pseudogenes of this gene dispersed through the genome. [provided by RefSeq, Jul 2008]

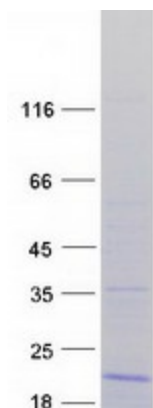
Product images:



Circular map for RC200054



Western blot validation of overexpression lysate (Cat# [LY409479]) using anti-DDK antibody (Cat# [TA50011-100]). Left: Cell lysates from untransfected HEK293T cells; Right: Cell lysates from HEK293T cells transfected with [RC213376] using transfection reagent MegaTran 2.0 (Cat# [TT210002]).



Coomassie blue staining of purified RPL36 protein (Cat# [TP300054]). The protein was produced from HEK293T cells transfected with RPL36 cDNA clone (Cat# RC200054) using MegaTran 2.0 (Cat# [TT210002]).