

Product datasheet for RC200052L1

MRPL18 (NM_014161) Human Tagged Lenti ORF Clone

Product data:

Product Type:	Expression Plasmids
Product Name:	MRPL18 (NM_014161) Human Tagged Lenti ORF Clone
Tag:	Myc-DDK
Symbol:	MRPL18
Synonyms:	HSPC071; L18mt; MRP-L18
Mammalian Cell Selection:	None
Vector:	pLenti-C-Myc-DDK (PS100064)
E. coli Selection:	Chloramphenicol (34 ug/mL)
ORF Nucleotide Sequence:	The ORF insert of this clone is exactly the same as(RC200052).
Restriction Sites:	SgfI-MluI
Cloning Scheme:	

Cloning sites used for ORF Shuttling:



* The last codon before the Stop codon of the ORF.

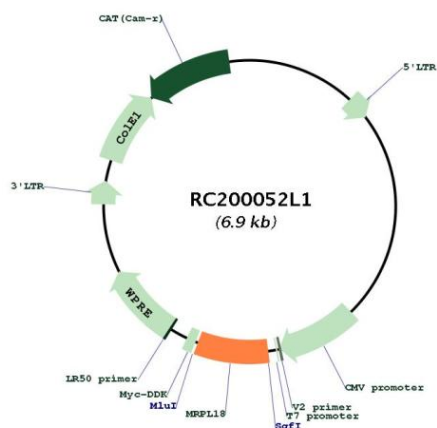
ACCN:	NM_014161
ORF Size:	540 bp



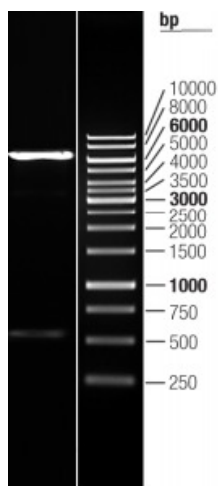
[View online »](#)

OTI Disclaimer:	The molecular sequence of this clone aligns with the gene accession number as a point of reference only. However, individual transcript sequences of the same gene can differ through naturally occurring variations (e.g. polymorphisms), each with its own valid existence. This clone is substantially in agreement with the reference, but a complete review of all prevailing variants is recommended prior to use. More info
OTI Annotation:	This clone was engineered to express the complete ORF with an expression tag. Expression varies depending on the nature of the gene.
Components:	The ORF clone is ion-exchange column purified and shipped in a 2D barcoded Matrix tube containing 10ug of transfection-ready, dried plasmid DNA (reconstitute with 100 ul of water).
Reconstitution Method:	<ol style="list-style-type: none"> 1. Centrifuge at 5,000xg for 5min. 2. Carefully open the tube and add 100ul of sterile water to dissolve the DNA. 3. Close the tube and incubate for 10 minutes at room temperature. 4. Briefly vortex the tube and then do a quick spin (less than 5000xg) to concentrate the liquid at the bottom. 5. Store the suspended plasmid at -20°C. The DNA is stable for at least one year from date of shipping when stored at -20°C.
RefSeq:	NM_014161.2
RefSeq Size:	994 bp
RefSeq ORF:	543 bp
Locus ID:	29074
UniProt ID:	Q9H0U6
Cytogenetics:	6q25.3
MW:	20.6 kDa
Gene Summary:	This nuclear gene encodes a protein component of the larger 39S subunit of mitochondrial ribosome. This protein may also aid in the import of nuclear-encoded 5S rRNA into mitochondria. Alternative splicing results in multiple transcript variants, most of which are not predicted to encode a protein. A pseudogene of this gene is found on chromosome 16. [provided by RefSeq, Jan 2016]

Product images:



Circular map for RC200052L1



Double digestion of RC200052L1 using SgfI and MluI