

## Product datasheet for **RC200052**

### MRPL18 (NM\_014161) Human Tagged ORF Clone

#### Product data:

|                           |   |
|---------------------------|---|
| Product Type:             | Expression Plasmids   |
| Product Name:             | MRPL18 (NM_014161) Human Tagged ORF Clone                         |
| Tag:                      | Myc-DDK   |
| Symbol:                   | MRPL18  |
| Synonyms:                 | HSPC071; L18mt; MRP-L18   |
| Mammalian Cell Selection: | Neomycin  |
| Vector:                   | pCMV6-Entry (PS100001)  |
| E. coli Selection:        | Kanamycin (25 ug/mL)  |
| ORF Nucleotide Sequence:  | >RC200052 ORF sequence<br>Red=Cloning site Blue=ORF Green=Tags(s) |

TTTGTAAACGACTCACTATAGGGCGGCCGGAATTCGTCGACTGGATCCGGTACCGAGGAGATCTGCC  
 GCC**CGATCGCC**

ATGGCGCTTCGGTCGCGGTTTTGGGGTTGTTCTCGGTTTGCAGGAACCTGGGTGCAGGTTGCAGCCC  
 TGTCACACAGCTCCGAGCCGGCAGCGAAACCTGAAGTGGACCCTGTGGAAATGAAGCTGTCGCCCCAGA  
 ATTCACCAACCGGAACCCCGGAACCTGGAGCTTTTATCTGTAGCCAGGAAAGAGCGGGGCTGGCGGACG  
 GTGTTTCCCTCCCGTGAATCTGGCACAGGTTGCGAGTTATAAGGACTCAGCATCATGTAGAAGCACTTG  
 TGGAGCATCAGAAATGGCAAGGTTGTGGTTTCGGCTCCACTCGTGAGTGGGCTATTAAGGACACCTTTA  
 TAGTACCAGAAATGTGGTGGCTTGTGAGAGTATAGGACGAGTGCTGGCACAGAGATGCTTAGAGGCGGGA  
 ATCAACTTCATGGTCTACCAACCAACCCCGTGGGAGGCAGCCTCAGACTCGATGAAACGACTACAAAGTG  
 CCATGACAGAAGGTGGTGTGGTTCTACGGGAACCTCAGAGAATCTATGAA

**ACGCGT**ACGCGGCCGCTCGAGCAGAACTCATCTCAGAAGAGGATCTGGCAGCAAATGATATCCTGGATT  
 ACAAGGATGACGACGATAAGGTTTAA

|                   |  |
|-------------------|--|
| Protein Sequence: | >RC200052 protein sequence<br>Red=Cloning site Green=Tags(s) |
|-------------------|--|

MALRSRFWGLFSVCRNPGCRFAALSTSSEPAAKPEVDPVENEAVAPEFTNRNPNRLELLSVARKERGWR  
 VFPSREFWHRLRVIRTQHHVEALVEHQNGKVVVSASTREWAIAKKHLYSTRNVVACESIGRVLAQRCL  
 EAGINFMVYQPTPWEAASDSMKRLQSAMTEGGVVLREPQRIYE

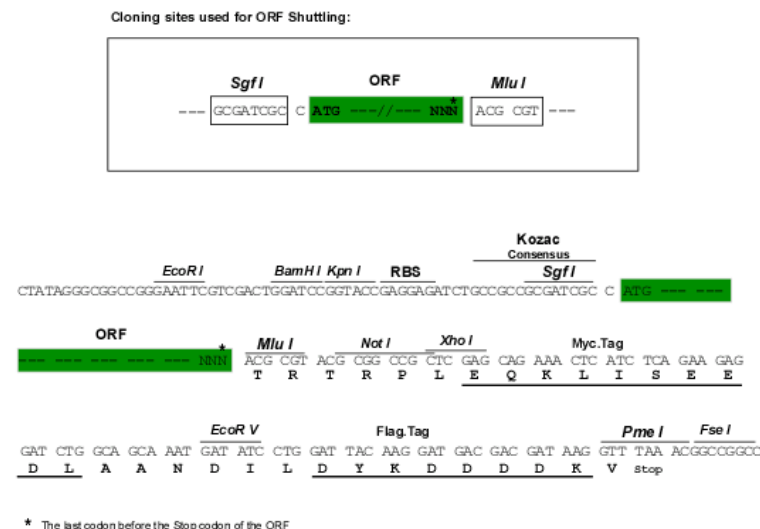
**TR**TRPLEQKLISEEDLAANDILDYKDDDDKV

|                |   |
|----------------|---|
| Chromatograms: | <a href="https://cdn.origene.com/chromatograms/mk6080_c01.zip">https://cdn.origene.com/chromatograms/mk6080_c01.zip</a> |
|----------------|---|


[View online »](#)

Restriction Sites: Sgfl-MluI

### Cloning Scheme:



ACCN: NM 014161

ORF Size: 540 bp

**OTI Disclaimer:** The molecular sequence of this clone aligns with the gene accession number as a point of reference only. However, individual transcript sequences of the same gene can differ through naturally occurring variations (e.g. polymorphisms), each with its own valid existence. This clone is substantially in agreement with the reference, but a complete review of all prevailing variants is recommended prior to use. More info

**OTI Annotation:** This clone was engineered to express the complete ORF with an expression tag. Expression varies depending on the nature of the gene.

**Components:** The ORF clone is ion-exchange column purified and shipped in a 2D barcoded Matrix tube containing 10ug of transfection-ready, dried plasmid DNA (reconstitute with 100 ul of water).

**Reconstitution Method:**

1. Centrifuge at 5,000xg for 5min.
2. Carefully open the tube and add 100ul of sterile water to dissolve the DNA.
3. Close the tube and incubate for 10 minutes at room temperature.
4. Briefly vortex the tube and then do a quick spin (less than 5000xg) to concentrate the liquid at the bottom.
5. Store the suspended plasmid at -20°C. The DNA is stable for at least one year from date of shipping when stored at -20°C.

**Note:** Plasmids are not sterile. For experiments where strict sterility is required, filtration with 0.22um filter is required.

RefSeq: NM 014161.5

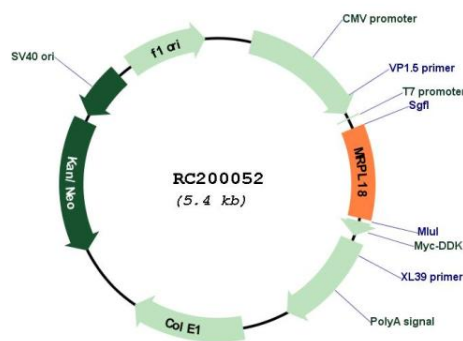
RefSeq Size: 994 bp

RefSeq ORF: 543 bp

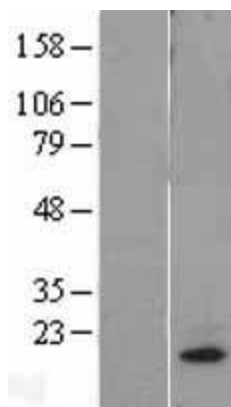
**Locus ID:** 29074  
**UniProt ID:** [Q9H0U6](#)  
**Cytogenetics:** 6q25.3  
**MW:** 20.6 kDa

**Gene Summary:** This nuclear gene encodes a protein component of the larger 39S subunit of mitochondrial ribosome. This protein may also aid in the import of nuclear-encoded 5S rRNA into mitochondria. Alternative splicing results in multiple transcript variants, most of which are not predicted to encode a protein. A pseudogene of this gene is found on chromosome 16. [provided by RefSeq, Jan 2016]

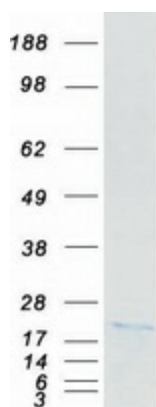
## Product images:



Circular map for RC200052



Western blot validation of overexpression lysate (Cat# [LY402283]) using anti-DDK antibody (Cat# [TA50011-100]). Left: Cell lysates from untransfected HEK293T cells; Right: Cell lysates from HEK293T cells transfected with RC200052 using transfection reagent MegaTran 2.0 (Cat# [TT210002]).



Coomassie blue staining of purified MRPL18 protein (Cat# [TP300052]). The protein was produced from HEK293T cells transfected with MRPL18 cDNA clone (Cat# RC200052) using MegaTran 2.0 (Cat# [TT210002]).