

## Product datasheet for **RC200046**

### **SNX17 (NM\_014748) Human Tagged ORF Clone**

#### **Product data:**

Product Type:	Expression Plasmids
Product Name:	SNX17 (NM_014748) Human Tagged ORF Clone
Tag:	Myc-DDK
Symbol:	SNX17
Vector:	pCMV6-Entry (PS100001)
E. coli Selection:	Kanamycin (25 ug/mL)
Cell Selection:	Neomycin



[View online »](#)

**ORF Nucleotide Sequence:**

>RC200046 ORF sequence  
 Red=Cloning site Blue=ORF Green=Tags(s)

TTTTGTAATACGACTCACTATAGGGCGGCCGGGAATTCGTCGACTGGATCCGGTACCGAGGAGATCTGCC  
 GCC**CGCATCGCC**

ATGCACCTTTCCATTCCCGAAACCGAGTCCCGCAGCGGGACAGCGCGGCTCCGCCTACGTGGCCTATA  
 ACATTCACGTGAATGGAGTCTGCACTGTGCGGTGCGCTACAGCCAGCTCCTGGGCTGCACGAGCAGCT  
 TCGGAAGGAGTATGGGGCCAATGTGCTTCTGCACTCCCGCCAAAGAAGCTTTTCTCTGACTCCTGCT  
 GAGGTAGAACAGAGGAGAGAGCAGTTAGAGAAGTACATGCAAGCTGTTCCGCAAGACCCATTGCTTGGGA  
 GCAGCGAGACTTTCAACAGTTTCTGCGTGGGCAACAACAGGAGACACAGCAGGTCCCCACAGAGGAAGT  
 GTCCTTGGAAAGTCTGCTCAGCAACGGGCAGAAAGTTCTGGTCAACGTGCTAACTCAGATCAGACTGAG  
 GATGCTCTGGAGGCTGTAGCTGCAAAGCTGGATCTTCCAGATGACTTGATTGGATACTTTAGTCTATTCT  
 TAGTTCGAGAAAAAGAGGATGGAGCCTTTTCTTTGTACGGAAGTTGCAAGAGTTTGAGCTGCCTTATGT  
 GTCTGTACCAGCCTTCGGAGTCAAGAGTATAAGATTGTGCTAAGGAAGATTATTGGGACTCTGCCTAT  
 GATGACGATGTATGGAGAACCAGGTTGGCCTGAACCTGCTTTATGCTCAGACGGTATCAGATATTGAGC  
 GTGGGTGGATCTTGGTACCAAGGAACAGCACCCGCAACTCAAATCTCTGCAAGAGAAAAGTCTCCAAGAA  
 GGAGTTCTGAGACTGGCCAGACGCTGCGGCACTATGGTACTTGCCTTTGATGCCTGTGTGGCTGAC  
 TTCCAGAAAAGGACTGTCTGTGGTGGTGGAGCGGGCAACAGTGGAGCTCAGCTGCAGCTCCGCTGC  
 CTGGCCAGCAACTCCGAGAAGGCTCCTCCGGGTACCCGCATGCGATGCTGGCGGGTCACTCCTCTGT  
 ACCATTGCCAGTGAAGCAGCAGCAGCCAGGCGGGGCGGGGTGAGGTGCGCCTGGAAGTGGCTTTT  
 GAATACCTCATGAGCAAGGACCGGCTACAGTGGGTCAACATCACTAGCCCCAGGCTATCATGATGAGCA  
 TCTGCTTGCAGTCCATGGTTGATGAAGTGGTGAAGAAATCTGGCGGCAGTATCAGGAAGATGCTGCG  
 CCGGCGGGTGGGGGTACTCTGAGACGCTCAGACAGCCAGCAAGCAGTGAAGTCCCACCACTGCTTGAG  
 TCACCTGATGCCACCCGGGAGTCTATGGTCAAACCTCTCAAGTAAGCTGAGTGCCGTGAGCTTGGGGGAA  
 TTGGCAGTCCCAGCACAGATGCCAGTGGCAGTGTCCACGGCAATTTGCTTTCGAGGCGATTGGAGA  
 TGAGGATCTG

**ACGCGT**ACGCGGCCGCTCGAGCAGAAACTCATCTCAGAAGAGGATCTGGCAGCAAATGATATCCTGGATT  
 ACAAGGATGACGACGATAAGGTTTAA

**Protein Sequence:**

>RC200046 protein sequence  
 Red=Cloning site Green=Tags(s)

MHFSIPETESRSGDSGGSAYVAYNIHVNGVLHCRVRYSQLLGLHEQLRKEYGANVLPAPPPKFLSLTPA  
 EVEQRRELEKYMQAVRQDPLLGSSETFNFLRRAQQETQQVPTTEVSLEVLVLSNGQKLVNVLTSQTE  
 DVLEAVAAKLDLPDDLIGYFSLFLVREKEDGAFSFRKLEQEFELPYVSVTSLRSQEKIVLRKSYWDSAY  
 DDDVMENRVGLNLLYAQTVSDIERGWILVTKEQHRQLKSLQEKVSKKEFLRLAQLRHGYLRFDACVAD  
 FPEKDCPVVVSAGNSELQLRLPGQQLREGSFRVTRMRCWRVTSVPLPSGSTSSPGRGRGEVRLLELAF  
 EYLMKDRLQWVTITSPQAIMMSICLQSMVDELMVKKSGGSIRKMLRRRVGGTLRRSDSQAVKSPPLLE  
 SPDATRESMVKLSKLSAVSLRIGISPSTDASASDVHGNFAFEGIGDEDL

**TR**TRPLEQKLISEEDLAANDILDYKDDDDKV

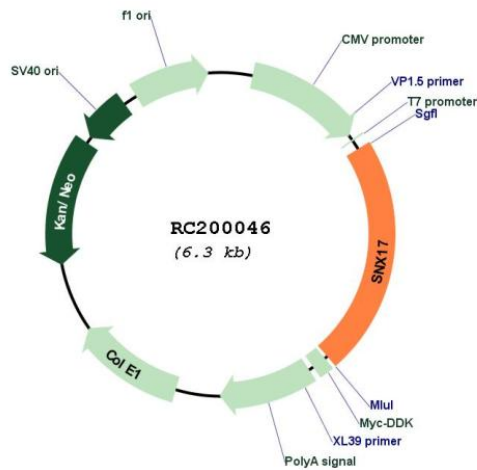
**Chromatograms:**

[https://cdn.origene.com/chromatograms/mk6177\\_c05.zip](https://cdn.origene.com/chromatograms/mk6177_c05.zip)

**Restriction Sites:**

Sgfl-Mlul

**Cloning Scheme:**

**Plasmid Map:**


**ACCN:** NM\_014748

**ORF Size:** 1410 bp

**OTI Disclaimer:** The molecular sequence of this clone aligns with the gene accession number as a point of reference only. However, individual transcript sequences of the same gene can differ through naturally occurring variations (e.g. polymorphisms), each with its own valid existence. This clone is substantially in agreement with the reference, but a complete review of all prevailing variants is recommended prior to use. [More info](#)

**OTI Annotation:** This clone was engineered to express the complete ORF with an expression tag. Expression varies depending on the nature of the gene.

**Components:** The ORF clone is ion-exchange column purified and shipped in a 2D barcoded Matrix tube containing 10ug of transfection-ready, dried plasmid DNA (reconstitute with 100 ul of water).

**Reconstitution Method:**

1. Centrifuge at 5,000xg for 5min.
2. Carefully open the tube and add 100ul of sterile water to dissolve the DNA.
3. Close the tube and incubate for 10 minutes at room temperature.
4. Briefly vortex the tube and then do a quick spin (less than 5000xg) to concentrate the liquid at the bottom.
5. Store the suspended plasmid at -20°C. The DNA is stable for at least one year from date of shipping when stored at -20°C.

**RefSeq:** [NM\\_014748.4](#)

**RefSeq Size:** 2475 bp

**RefSeq ORF:** 1413 bp

**Locus ID:** 9784

**UniProt ID:** [Q15036](#)

**Cytogenetics:** 2p23.3

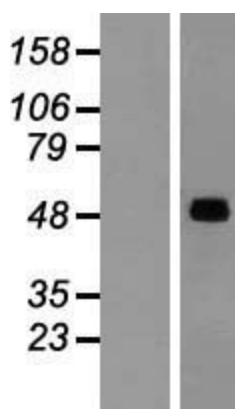
**Domains:** PX

**Protein Families:** Druggable Genome

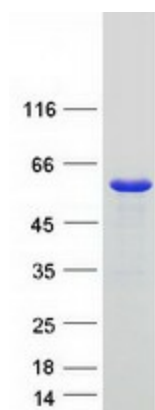
**MW:** 52.9 kDa

**Gene Summary:** This gene encodes a member of the sorting nexin family. Members of this family contain a phox (PX) domain, which is a phosphoinositide binding domain, and are involved in intracellular trafficking. This protein does not contain a coiled coil region, like some family members, but contains a B41 domain. This protein interacts with the cytoplasmic domain of P-selectin, and may function in the intracellular trafficking of P-selectin. Alternative splicing results in multiple transcript variants encoding different isoforms. [provided by RefSeq, May 2012]

### Product images:



Western blot validation of overexpression lysate (Cat# [LY415066]) using anti-DDK antibody (Cat# [TA50011-100]). Left: Cell lysates from untransfected HEK293T cells; Right: Cell lysates from HEK293T cells transfected with RC200046 using transfection reagent MegaTran 2.0 (Cat# [TT210002]).



Coomassie blue staining of purified SNX17 protein (Cat# [TP300046]). The protein was produced from HEK293T cells transfected with SNX17 cDNA clone (Cat# RC200046) using MegaTran 2.0 (Cat# [TT210002]).