

## Product datasheet for **RC200042**

### **Bcl rambo (BCL2L13) (NM\_015367) Human Tagged ORF Clone**

#### **Product data:**

Product Type:	Expression Plasmids
Product Name:	Bcl rambo (BCL2L13) (NM_015367) Human Tagged ORF Clone
Tag:	Myc-DDK
Symbol:	Bcl rambo
Synonyms:	BCL-RAMBO; Bcl2-L-13; MIL1
Mammalian Cell Selection:	Neomycin
Vector:	pCMV6-Entry (PS100001)
E. coli Selection:	Kanamycin (25 ug/mL)



[View online »](#)

**ORF Nucleotide Sequence:**

>RC200042 ORF sequence  
 Red=Cloning site Blue=ORF Green=Tags(s)

TTTTGTAATACGACTCACTATAGGGCGGCCGGAATTCGTCGACTGGATCCGGTACCGAGGAGATCTGCC  
 GCC**CGGATCGCC**

ATGGCGTCTCTTCTACTGTGCCTCTGGGATTTCACTATGAAACAAAGTATGTTGTTCTCAGCTACTTGG  
 GACTCCTCTCTCAAGAGAAGCTGCAAGAGCAACATCTTTCTCACCCCAAGGGTTCAACTAGATATAGC  
 TTCACAATCTCTGGATCAAGAAATTTTATTAAGTTAAACTGAAATTGAAGAAGAGCTAAAATCTCTG  
 GACAAAGAAATTTCTGAAGCCTTACCAGCACAGGCTTTGACCGTCACACTTCTCCAGTGTTCAGCCCTG  
 CCAATCCAGAAAGCTCAATGGAAGACTGCTTGGCCATCTTGGAGAAAAAGTGTCCAGGAACTGAAAGA  
 GCCTCTCCATAAAGCATTGCAAATGCTCCTGAGCCAGCCAGTGACATATCAGGCATTTGGGAATGTACA  
 CTGGAGACCACAGTTCATGCCAGCGCTGGAATAAGATTTGGTGCCTCTGGTTTGTCTACGACAAATGC  
 TTTTGAATTGACAAGACGTGGTCAAGAACCTTTGAGCGCACTGTGCAGTTTGGCGTGACATACCTGGA  
 GGACTATTCGGCAGAGTACATCATTAGCAAGGTGGCTGGGCACTGTGTTTAGTCTTGAGTCAGAGGAG  
 GAGGAATACCCTGGAATCACTGCAGAAGATAGCAATGACATTTACATCCTGCCAGCGACAACCTCTGGAC  
 AAGTCAGTCCCCAGAGTCTCCAAGTGTGACCACTTCTGGCAGTCTGAGAGCTTACCTGTGTCAGTGTG  
 AGCTAGCCAGAGTTGGCACACAGAAAGCCTGCCAGTGTCACTAGGCCCTGAGTCTGGCAGCAGATTGCA  
 ATGGATCTGAAGAAGTAAAAGCTTAGACAGCAACGGAGCTGGAGAGAAGAGTGAACAACCTCCTCTA  
 ATTCTGACATTGTGCACGTGGAGAAAGAAGAGGTGCCCGAGGGCATGGAAGAGGCTGTGTGGCTTCTGT  
 GGTCTTGGCAGCGCGGAGCTGCAAGAGGCACTTCTGAAGCCCCAGTCCCTTGCTTCCACATCACT  
 GCCACCTCCCTGCTGGGACAAGGGAATCTGACACAGAAGTATCACAGTTGAGAAATCCAGCCCTGCTA  
 CATCTCTGTTTGTAGAATTGATGAAGAAGAGGTGAAAGCAGCAACAACCTGAACCTACTGAAGTGGAGGA  
 GGTGGTCCCGCACTGGAACCCACAGAAACGCTGCTGAGTGAGAAGGAGATAAACGCAAGGGAAGAGAGC  
 CTGTGGAAGAGCTGTCCCTGCCAGCAGAGAAGAGCCCGTCCCGCTGTGAGGCAAGTCTAGACTGT  
 CCCCCCGCGTGAGATGAAGCCCATGCCGCTGTCTGAGGGCAAGTCTATACTGCTGTTTGGAGGGCTGCT  
 TGCTGTTGCCATCTGGCAGTGGCCATCGGGTAGCCCTGGCTCTGAGAAAGAA

**ACGCGT**ACGCGGCCGCTCGAGCAGAAACTCATCTCAGAAGAGGATCTGGCAGCAATGATATCTGGATT  
 ACAAGGATGACGACGATAAGGTTTAA

**Protein Sequence:**

>RC200042 protein sequence  
 Red=Cloning site Green=Tags(s)

MASSTVPLGFHYETKYVVL SYLGLLSQEKLQEQLSSPQGVQLDIASQSLDQEILLKVKTEIEEELKSL  
 DKEISEAFTSTGFRHTSPVFS PANPESSMEDCLAHLGEKVSQELKEPLHKALQMLLSQPVTYQAFRECT  
 LETTVHASGWNKILVPLVLLRQMLLELTRRGQEPLSALLQFGVTYLEDYSAEYIIQQGGWTVFSLESEE  
 EYYPGITAEDSNDIYILPSDMSGVSPPESTVTTSWQSESLPVLSASQSWHTESLPVSLGPESWQQIA  
 MDPEEVKSLDSNGAGEKSENSSNSDIHVHEKEEVPEGMEEAAVASVVLPARELQEALPEAPAPLLPHIT  
 ATSLLGTRSDTEVITVEKSSPATSLFVELDEEEVKAATTEPTEVEEVPALPTETLLSEKEINAREES  
 LVEELSPASEKKPVPPSEGKSR LSPAGEMKPMPLSEGKSI LLFGGAAVA I LAVAIGVALALRKK

**TR**TRPLEQKLI SEEDLAANDILDYKDDDDKV

**Chromatograms:**

[https://cdn.origene.com/chromatograms/mk6408\\_h05.zip](https://cdn.origene.com/chromatograms/mk6408_h05.zip)

**Restriction Sites:**

Sgfl-Mlul

**Cloning Scheme:**



**ACCN:** NM\_015367

**ORF Size:** 1455 bp

**OTI Disclaimer:** The molecular sequence of this clone aligns with the gene accession number as a point of reference only. However, individual transcript sequences of the same gene can differ through naturally occurring variations (e.g. polymorphisms), each with its own valid existence. This clone is substantially in agreement with the reference, but a complete review of all prevailing variants is recommended prior to use. [More info](#)

**OTI Annotation:** This clone was engineered to express the complete ORF with an expression tag. Expression varies depending on the nature of the gene.

**Components:** The ORF clone is ion-exchange column purified and shipped in a 2D barcoded Matrix tube containing 10ug of transfection-ready, dried plasmid DNA (reconstitute with 100 ul of water).

**Reconstitution Method:**

1. Centrifuge at 5,000xg for 5min.
2. Carefully open the tube and add 100ul of sterile water to dissolve the DNA.
3. Close the tube and incubate for 10 minutes at room temperature.
4. Briefly vortex the tube and then do a quick spin (less than 5000xg) to concentrate the liquid at the bottom.
5. Store the suspended plasmid at -20°C. The DNA is stable for at least one year from date of shipping when stored at -20°C.

**RefSeq:** [NM\\_015367.4](#)

**RefSeq Size:** 5132 bp

**RefSeq ORF:** 1458 bp

**Locus ID:** 23786

**UniProt ID:** [Q9BXK5](#)

**Cytogenetics:** 22q11.21

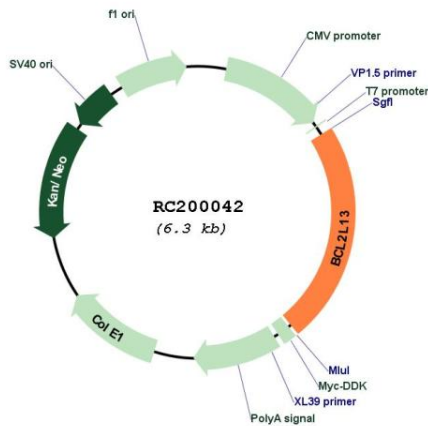
**Domains:** Bcl-2

**Protein Families:** Druggable Genome, Transmembrane

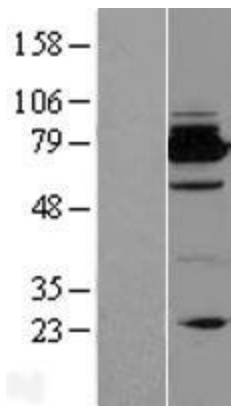
**MW:** 52.7 kDa

**Gene Summary:** This gene encodes a mitochondrially-localized protein with conserved B-cell lymphoma 2 homology motifs. Overexpression of the encoded protein results in apoptosis. Alternatively spliced transcript variants have been observed for this gene. [provided by RefSeq, Jul 2012]

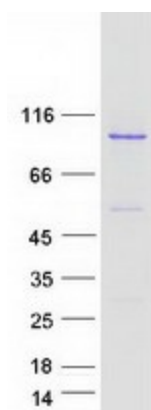
**Product images:**



Circular map for RC200042



Western blot validation of overexpression lysate (Cat# [LY414596]) using anti-DDK antibody (Cat# [TA50011-100]). Left: Cell lysates from untransfected HEK293T cells; Right: Cell lysates from HEK293T cells transfected with RC200042 using transfection reagent MegaTran 2.0 (Cat# [TT210002]).



Coomassie blue staining of purified BCL2L13 protein (Cat# [TP300042]). The protein was produced from HEK293T cells transfected with BCL2L13 cDNA clone (Cat# RC200042) using MegaTran 2.0 (Cat# [TT210002]).