

Product datasheet for RC200041

SNX24 (NM_014035) Human Tagged ORF Clone

Product data:

Product Type: Expression Plasmids
Product Name: SNX24 (NM_014035) Human Tagged ORF Clone
Tag: Myc-DDK
Symbol: SNX24
Synonyms: PRO1284; SBBI31
Mammalian Cell Selection: Neomycin
Vector: pCMV6-Entry (PS100001)
E. coli Selection: Kanamycin (25 ug/mL)
ORF Nucleotide Sequence: >RC200041 ORF sequence
 Red=Cloning site Blue=ORF Green=Tags(s)

TTTTGTAATACGACTCACTATAGGGCGCCGGGAATTCGTCGACTGGATCCGGTACCGAGGAGATCTGCC
 GCCCGCATCGCC

ATGGAGGTCTACATCCCCTCTTCGCTATGAAGAGAGCGACCTGGAGCGGGGATACACGGTGTTTAAGA
 TAGAAGTGCTAATGAATGGAAGAAAACATTTTGTGAAAAGAGATACAGCGAATTCATGCTTTGCACAA
 AAAGCTTAAGAAATGTATAAAAACCTCCAGAAATCCCTTCTAAACATGTTAGGAACTGGGTCCCCAAAGTC
 TTGGAACAGCGACGACAAGGCTTGAAACATACTTACAGGCTGTCATTTAGAAAATGAAGAACTCCCA
 AACTGTTTCTTGATTTCTAAATGTGCGACACTTGCCCTCTCTACCAAAGGCAGAAAGTTGTGGATCTTT
 TGATGAAACAGAGTCTGAAGAGTCAAGCAAAGTGTCCACCGCCTGTGCTGCTGTTCTCAGGGATCCA
 TATGTCTTGCTGCAGCCAGCGATTTTCCAATGTGGTTATTGAAGGAGTCTCCATGGGATATTTTACC
 CTCATCTACAGCCAGG

ACGCGTACGCGGCCGCTCGAGCAGAAACTCATCTCAGAAGAGGATCTGGCAGCAAATGATATCCTGGATT
 ACAAGGATGACGACGATAAGGTTTAA

Protein Sequence: >RC200041 protein sequence
 Red=Cloning site Green=Tags(s)

MEVYIPSFYEESDLERGYTVFKIEVLMNGRKHFEVKRYSEFHALHKLKKCIKTPKIPSKHVRNWVPKV
 LEQRRQGLETYLQAVILENEELPKLFLDFLNVRHLPKPAESCGSFDTESESSKLSHQPVLLFLRDP
 YVLPAAADFNNVIEGLVHGIFPHLQPR

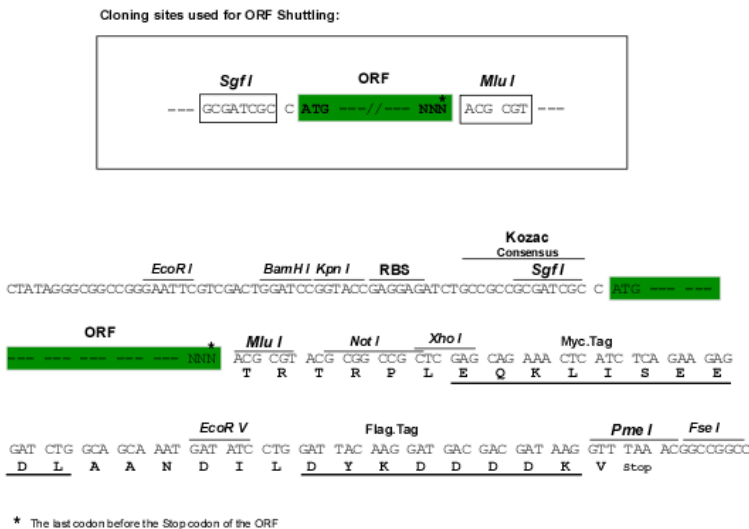
TRTRPLEQKLISEEDLAANDILDYKDDDDKV

Chromatograms: https://cdn.origene.com/chromatograms/mk6052_b04.zip



Restriction Sites: SgfI-MluI

Cloning Scheme:



ACCN: NM_014035

ORF Size: 507 bp

OTI Disclaimer: The molecular sequence of this clone aligns with the gene accession number as a point of reference only. However, individual transcript sequences of the same gene can differ through naturally occurring variations (e.g. polymorphisms), each with its own valid existence. This clone is substantially in agreement with the reference, but a complete review of all prevailing variants is recommended prior to use. [More info](#)

OTI Annotation: This clone was engineered to express the complete ORF with an expression tag. Expression varies depending on the nature of the gene.

Components: The ORF clone is ion-exchange column purified and shipped in a 2D barcoded Matrix tube containing 10ug of transfection-ready, dried plasmid DNA (reconstitute with 100 ul of water).

Reconstitution Method:

1. Centrifuge at 5,000xg for 5min.
2. Carefully open the tube and add 100ul of sterile water to dissolve the DNA.
3. Close the tube and incubate for 10 minutes at room temperature.
4. Briefly vortex the tube and then do a quick spin (less than 5000xg) to concentrate the liquid at the bottom.
5. Store the suspended plasmid at -20°C. The DNA is stable for at least one year from date of shipping when stored at -20°C.

RefSeq: [NM_014035.4](#)

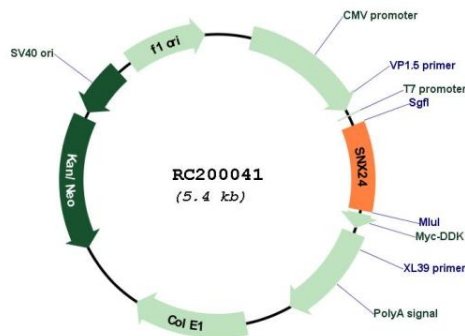
RefSeq Size: 2140 bp

RefSeq ORF: 510 bp

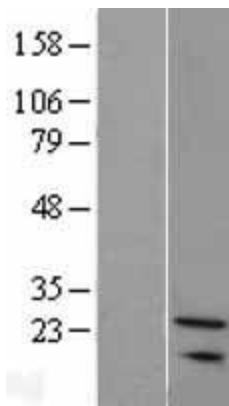
Locus ID: 28966

UniProt ID: [Q9Y343](#)

Cytogenetics: 5q23.2
Domains: PX
MW: 19.8 kDa
Gene Summary: May be involved in several stages of intracellular trafficking.[UniProtKB/Swiss-Prot Function]

Product images:


Circular map for RC200041



Western blot validation of overexpression lysate (Cat# [LY402269]) using anti-DDK antibody (Cat# [TA50011-100]). Left: Cell lysates from untransfected HEK293T cells; Right: Cell lysates from HEK293T cells transfected with RC200041 using transfection reagent MegaTran 2.0 (Cat# [TT210002]).