

## Product datasheet for RC200035

### EXOSC3 (NM\_016042) Human Tagged ORF Clone

#### Product data:

Product Type:	Expression Plasmids
Product Name:	EXOSC3 (NM_016042) Human Tagged ORF Clone
Tag:	Myc-DDK
Symbol:	EXOSC3
Synonyms:	bA3J10.7; CGI-102; hRrp-40; p10; PCH1B; RRP40; Rrp40p
Mammalian Cell Selection:	Neomycin
Vector:	pCMV6-Entry (PS100001)
E. coli Selection:	Kanamycin (25 ug/mL)
ORF Nucleotide Sequence:	>RC200035 ORF sequence Red=Cloning site Blue=ORF Green=Tags(s)

TTTTGTAATACGACTCACTATAGGGCGGCCGGAATTCGTCGACTGGATCCGGTACCGAGGAGATCTGCC  
GCC**CGATCGCC**

ATGGCCGAACCTGCGTCTGTCGCGGCTGAATCTCTCGCGGGCAGCAGGGCGCGCTGCACGCACAGTAC  
TAGGTCAGGTGGTGTCCCGGTGAGGAGCTGCTCCTGCCGGAACAGGAGGACGCGGAAGGCCCTGGGG  
TGCAGTGGAGCGACCGTTGAGCCTGAATGCTAGAGCGTCTCGCGGTGCGCGTTGTATGCGGTCCGGC  
CTTCGGCGCTGTGGGACCGCTGCTGGTCACCAAGTGCAGCGCCTCCGTCACAAGGAGCCCGCAGTG  
GCAGCGCGCGGTGTTTACTGGTGGACTCTCAGCAGAAGCGGTATGTTCCAGTAAAAGGAGACCATGT  
GATTGGCATAGTGACAGCTAAATCTGGAGATATATTCAAAGTTGATGTTGGAGGGAGTGACCAGCTTCT  
TTGCTTACTTGTCAATTTGAAGGTGCAACTAAAAGAAACAGACCAATGTGCAGTTGGAGATCTCATCT  
ATGGCCAATTTGTGGTTGCTAATAAAGACATGGAACCAGAGATGGTCTGTATTGACAGCTGTGGACGAGC  
CAATGGAATGGTGTCAATGGACAGGATGGTCTGCTTTTTAAAGTGAAGTCTGGGCTTAATTAGAAAGCTA  
TTAGCTCCAGATTGTGAAATCATACAGGAAGTGGGAAAACCTATCCACTGGAGATAGTATTTGGAATGA  
ATGGAAGAATATGGGTTAAGGCAAAAACCATCCAGCAGACTTTAATTTGGCAAACATTTAGAAGCTTG  
TGAACACATGACGTGAGTCAAAGAAAACAGATCTTCTCCAGATTGGCAGAAAAGT

**ACGCGT**ACGCGGCCGCTCGAGCAGAAACTCATCTCAGAAGAGGATCTGGCAGCAAATGATATCCTGGATT  
ACAAGGATGACGACGATAAGGTTTAA



[View online »](#)

**Protein Sequence:** >RC200035 protein sequence  
 Red=Cloning site Green=Tags(s)

MAEPASVAAESLAGSRARAARTVLGQVVLPGEELLPEQEDAEGPGGAVRPLSLNARACSRVRRVVCVGG  
 LRRCGDRLLVTKCGRRLRHKEPGSGSGGGVYVWVDSQKRYVPVKGHDHVIIVTAKSGDIFKVDVGGSEPAS  
 LSYLSFEGATKRNRPNVQVGDLYGQFVANKDMEPEMVCIDSCGRANGMGVIGQDGLLKVTLGLIRKL  
 LAPDCEIIQEVGKLYPLEIVFGMNGRIWVKAKTIQQTLILANILEACEHMTSDQRKQIFSRLAES

TRTRPLEQKLISEEDLAANDILDYKDDDDKV

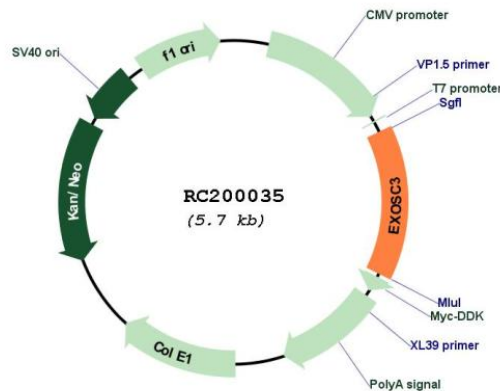
**Chromatograms:** [https://cdn.origene.com/chromatograms/mk6387\\_d06.zip](https://cdn.origene.com/chromatograms/mk6387_d06.zip)

**Restriction Sites:** SgfI-MluI

**Cloning Scheme:**



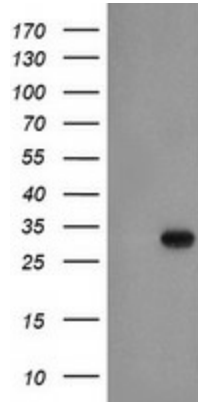
**Plasmid Map:**



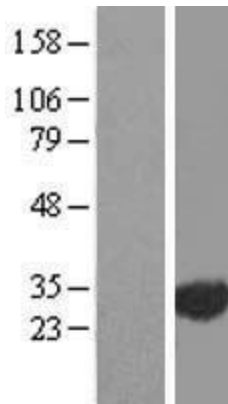
**ACCN:** NM\_016042

**ORF Size:** 825 bp

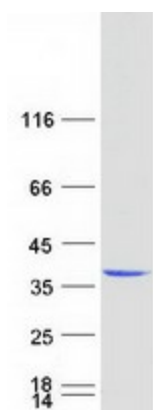
<b>OTI Disclaimer:</b>	The molecular sequence of this clone aligns with the gene accession number as a point of reference only. However, individual transcript sequences of the same gene can differ through naturally occurring variations (e.g. polymorphisms), each with its own valid existence. This clone is substantially in agreement with the reference, but a complete review of all prevailing variants is recommended prior to use. <a href="#">More info</a>
<b>OTI Annotation:</b>	This clone was engineered to express the complete ORF with an expression tag. Expression varies depending on the nature of the gene.
<b>Components:</b>	The ORF clone is ion-exchange column purified and shipped in a 2D barcoded Matrix tube containing 10ug of transfection-ready, dried plasmid DNA (reconstitute with 100 ul of water).
<b>Reconstitution Method:</b>	<ol style="list-style-type: none"><li>1. Centrifuge at 5,000xg for 5min.</li><li>2. Carefully open the tube and add 100ul of sterile water to dissolve the DNA.</li><li>3. Close the tube and incubate for 10 minutes at room temperature.</li><li>4. Briefly vortex the tube and then do a quick spin (less than 5000xg) to concentrate the liquid at the bottom.</li><li>5. Store the suspended plasmid at -20°C. The DNA is stable for at least one year from date of shipping when stored at -20°C.</li></ol>
<b>RefSeq:</b>	<a href="#">NM_016042.4</a>
<b>RefSeq Size:</b>	1857 bp
<b>RefSeq ORF:</b>	828 bp
<b>Locus ID:</b>	51010
<b>UniProt ID:</b>	<a href="#">Q9NQT5</a>
<b>Cytogenetics:</b>	9p13.2
<b>Protein Families:</b>	Stem cell - Pluripotency
<b>Protein Pathways:</b>	RNA degradation
<b>MW:</b>	29.6 kDa
<b>Gene Summary:</b>	This gene encodes a non-catalytic component of the human exosome, a complex with 3'-5' exoribonuclease activity that plays a role in numerous RNA processing and degradation activities. Related pseudogenes of this gene are found on chromosome 19 and 21. Alternatively spliced transcript variants encoding different isoforms have been described. [provided by RefSeq, Jun 2012]

**Product images:**

HEK293T cells were transfected with the pCMV6-ENTRY control (Cat# [PS100001], Left lane) or pCMV6-ENTRY EXOSC3 (Cat# RC200035, Right lane) cDNA for 48 hrs and lysed. Equivalent amounts of cell lysates (5 ug per lane) were separated by SDS-PAGE and immunoblotted with anti-EXOSC3 (Cat# [TA504794]). Positive lysates [LY414229] (100ug) and [LC414229] (20ug) can be purchased separately from OriGene.



Western blot validation of overexpression lysate (Cat# [LY414229]) using anti-DDK antibody (Cat# [TA50011-100]). Left: Cell lysates from untransfected HEK293T cells; Right: Cell lysates from HEK293T cells transfected with RC200035 using transfection reagent MegaTran 2.0 (Cat# [TT210002]).



Coomassie blue staining of purified EXOSC3 protein (Cat# [TP300035]). The protein was produced from HEK293T cells transfected with EXOSC3 cDNA clone (Cat# RC200035) using MegaTran 2.0 (Cat# [TT210002]).