

## Product datasheet for **RC200033**

### Mitochondrial ribosomal protein L11 (MRPL11) (NM\_016050) Human Tagged ORF Clone

#### Product data:

**Product Type:** Expression Plasmids  
**Tag:** Myc-DDK  
**Symbol:** Mitochondrial ribosomal protein L11  
**Synonyms:** CGI-113; L11MT; MRP-L11  
**Mammalian Cell Selection:** Neomycin  
**Vector:** pCMV6-Entry (PS100001)  
**E. coli Selection:** Kanamycin (25 ug/mL)  
**ORF Nucleotide Sequence:** >RC200033 ORF sequence  
 Red=Cloning site Blue=ORF Green=Tags(s)

TTTTGTAATACGACTCACTATAGGGCGGCCGGAATTCGTCGACTGGATCCGGTACCGAGGAGATCTGCC  
 GCC**CGCATCGCC**

ATGTCAAAGCTCGGCCGGGCCCGGGGCTCAGGAAGCCCGAGGTCGGCGGTGTAATCCGGGCGATCG  
 TGGCGGAGGCTGGCCATGCCCGGGCCCCACTAGGCCCAAGTCTGGGTCAGAGAGGCGTTTCCATCAA  
 CCAGTTTTGCAAGGAGTTCAATGAGAGGACAAAGGACATCAAGGAAGGCATTCTCTGCCTACCAAGATT  
 TTAGTGAAGCCTGACAGGACATTTGAAATTAAGATTGGACAGCCCACTGTTTCTACTTCTGAAGGCAG  
 CAGCTGGGATTGAAAAGGGGGCCCGGCAACAGGGAAGAGGTGGCAGGCCTGGTGACCTTGAAGCATGT  
 GTATGAGATTGCCCGCATCAAAGCTCAGGATGAGGCATTTGCCCTGCAGGATGTACCCCTGTCGTCTGTT  
 GTCCGCTCCATCATCGGGTCTGCCCCTTCTGCGCATTCGCGTGGTGAAGGACCTCAGTTCAGAAGAGC  
 TTGCAGCTTTCCAGAAGGAACGAGCCATCTTCTGGCTGCTCAGAAGGAGGCAGATTTGGCTGCCAAGA  
 AGAAGCTGCCAAGAAG

A**CGCGT**ACGCGGCCGCTCGAGCAGAACTCATCTCAGAAGAGGATCTGGCAGCAAATGATATCTGGATT  
 ACAAGGATGACGACGATAAGGTTTAA

**Protein Sequence:** >RC200033 protein sequence  
 Red=Cloning site Green=Tags(s)

MSKLGRAARGLRKPEVGGVIRAIVRAGLAMPGPPLGPVLGQRGVSINQFCKEFNERTKDIKEGIPLPTKI  
 LVKPDRTFEIKIGQPTVSYFLKAAAGIEKGARQTGKEVAGLVTLKHVYEIARIKAQDEAFALQDVPLSSV  
 VRSIIGSARSLGIRVVKDLSSEELAAAFQKERAIFLAAQKEADLAAQEAAKK

TRTRPLEQKLISEEDLAANDILDYKDDDDKV

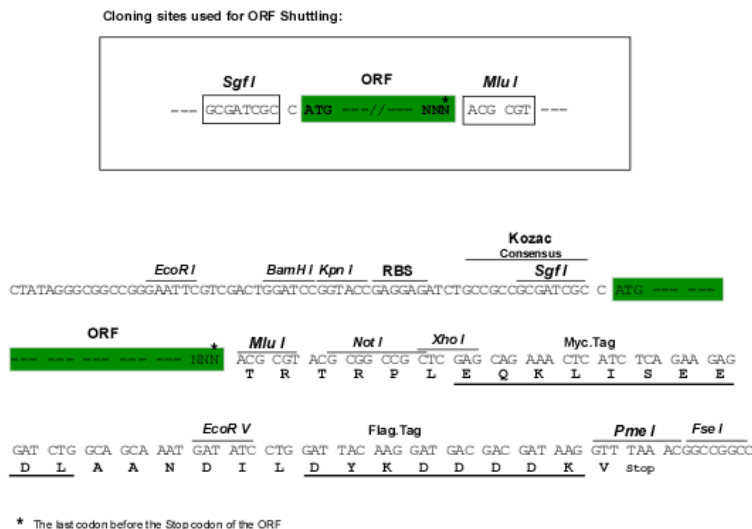
**Chromatograms:** [https://cdn.origene.com/chromatograms/mk6393\\_d05.zip](https://cdn.origene.com/chromatograms/mk6393_d05.zip)



[View online »](#)

Restriction Sites: Sgfl-MluI

### Cloning Scheme:



ACCN: NM\_016050

ORF Size: 576 bp

**OTI Disclaimer:** The molecular sequence of this clone aligns with the gene accession number as a point of reference only. However, individual transcript sequences of the same gene can differ through naturally occurring variations (e.g. polymorphisms), each with its own valid existence. This clone is substantially in agreement with the reference, but a complete review of all prevailing variants is recommended prior to use. [More info](#)

**OTI Annotation:** This clone was engineered to express the complete ORF with an expression tag. Expression varies depending on the nature of the gene.

**Components:** The ORF clone is ion-exchange column purified and shipped in a 2D barcoded Matrix tube containing 10ug of transfection-ready, dried plasmid DNA (reconstitute with 100 ul of water).

**Reconstitution Method:**

1. Centrifuge at 5,000xg for 5min.
2. Carefully open the tube and add 100ul of sterile water to dissolve the DNA.
3. Close the tube and incubate for 10 minutes at room temperature.
4. Briefly vortex the tube and then do a quick spin (less than 5000xg) to concentrate the liquid at the bottom.
5. Store the suspended plasmid at -20°C. The DNA is stable for at least one year from date of shipping when stored at -20°C.

**Note:** Plasmids are not sterile. For experiments where strict sterility is required, filtration with 0.22um filter is required.

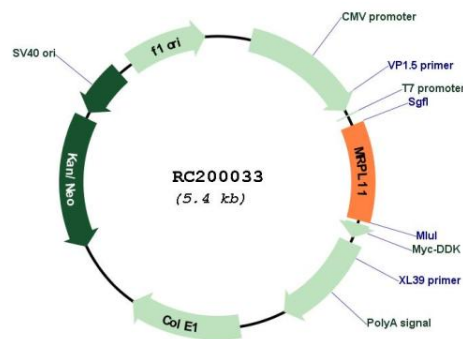
RefSeq: [NM\\_016050.5](#)

RefSeq Size: 1622 bp

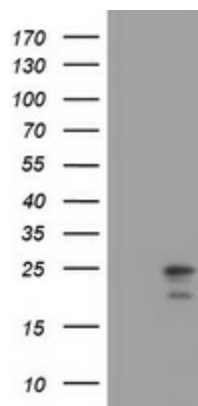
RefSeq ORF: 579 bp

Locus ID:	65003
UniProt ID:	<a href="#">Q9Y3B7</a>
Cytogenetics:	11q13.2
Domains:	Ribosomal_L11
MW:	20.7 kDa
Gene Summary:	This nuclear gene encodes a 39S subunit component of the mitochondrial ribosome. Alternative splicing results in multiple transcript variants. Pseudogenes for this gene are found on chromosomes 5 and 12. [provided by RefSeq, May 2014]

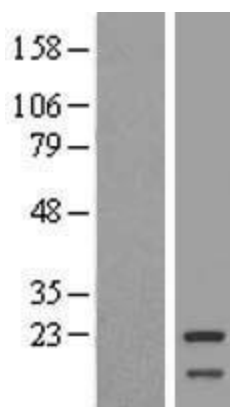
## Product images:



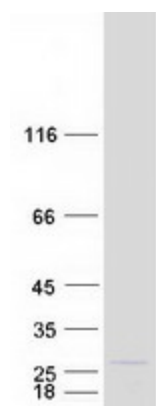
Circular map for RC200033



HEK293T cells were transfected with the pCMV6-ENTRY control (Cat# [PS100001], Left lane) or pCMV6-ENTRY MRPL11 (Cat# RC200033, Right lane) cDNA for 48 hrs and lysed. Equivalent amounts of cell lysates (5 ug per lane) were separated by SDS-PAGE and immunoblotted with anti-MRPL11(Cat# [TA505299]). Positive lysates [LY414217] (100ug) and [LC414217] (20ug) can be purchased separately from OriGene.



Western blot validation of overexpression lysate (Cat# [LY414217]) using anti-DDK antibody (Cat# [TA50011-100]). Left: Cell lysates from untransfected HEK293T cells; Right: Cell lysates from HEK293T cells transfected with RC200033 using transfection reagent MegaTran 2.0 (Cat# [TT210002]).



Coomassie blue staining of purified MRPL11 protein (Cat# [TP300033]). The protein was produced from HEK293T cells transfected with MRPL11 cDNA clone (Cat# RC200033) using MegaTran 2.0 (Cat# [TT210002]).