

Product datasheet for **RC200031**

MRPS7 (NM_015971) Human Tagged ORF Clone

Product data:

Product Type:	Expression Plasmids
Product Name:	MRPS7 (NM_015971) Human Tagged ORF Clone
Tag:	Myc-DDK
Symbol:	MRPS7
Synonyms:	bMRP27a; COXPD34; MRP-S; MRP-S7; RP-S7; RPMS7; S7mt
Vector:	pCMV6-Entry (PS100001)
E. coli Selection:	Kanamycin (25 ug/mL)
Cell Selection:	Neomycin
ORF Nucleotide Sequence:	>RC200031 ORF sequence Red=Cloning site Blue=ORF Green=Tags(s)

TTTTGTAATACGACTCACTATAGGGCGCCGGAATTCGTCGACTGGATCCGGTACCGAGGAGATCTGCC
GCC**CGATCGCC**

ATGTTGCCCCCGCAGTGAAGGTTGCCGAGGATGGTCGGCCTGGCGTTGGCGTGC GGCGGGCTGTCT
TGCAGCTTCCAGGGCTAACTCAGGTGAGATGGAGCCGCTATAGTCCTGAATCAAGGATCCCTTGATTGA
CAAGGAATATTATCGCAAGCCAGTGGAGGAGCTAACTGAGGAGGAGAAATATGTTCCGGGAGCTCAAGAAG
ACTCAGCTCATCAAAGCTGCTCCAGCAGGAAAACAAGTTCTGTGTTTGAAGACCCAGTCATCAGTAAAT
TCACCAACATGATGATGATAGGAGGAAACAAAGTACTGGCCAGATCCCTCATGATTCAGACTCTGGAAGC
TGTGAAAAGGAAGCAGTTTGAAGAATACCATGCCGCTTCTGCAGAGGAACAGGCAACCATCGAACGCAAC
CCCTACACCATCTTCCATCAAGCACTGAAAAACTGTGAGCCTATGATTGGGCTGGTACCCATCCTCAAGG
GAGGCCGTTTCTACCAGGTCCCTGTACCCCTACCCGACCGGCGTCGCCGCTTCTAGCCATGAAGTGGAT
GATCACTGAGTGCCGGGATAAAAAGCACCAGCGGACACTGATGCCGAGAAGCTGTCACACAAGCTGCTG
GAGGCTTCCATAACCAGGGCCCGTGATCAAGAGGAAGCATGACTTGCACAAGATGGCAGAGGCCAACCC
GTGCCCTGGCCCACTACCGCTGGTGG

ACGCGTACGCGGCCGCTCGAGCAGAAACTCATCTCAGAAGAGGATCTGGCAGCAAATGATATCCTGGATT
ACAAGGATGACGACGATAAGGTTTAA



[View online »](#)

Protein Sequence: >RC200031 protein sequence
 Red=Cloning site Green=Tags(s)

MVAPAVKVARGWVSLALGVRAVLQLPGLTQVRWSRYSPEFKDPLIDKEYYRKPVEELTEEEKYVRELKK
 TQLIKAAPAGKTSVVFEDPVISKFNTMMMIGGNKVLARSLMIQTLEAVKRKQFEKYHAASAEQATIERN
 PYTIFHQALKNCEPMIGLVPILKGRFYQVPVPLPDRRRRFLAMKWMITECRDKKHQRTLMPKLSHKLL
 EAFHNQGPVIKRRKHLHKMAEANRALAHYRWW

TRTRPLEQKLISEEDLAANDILDYKDDDDKV

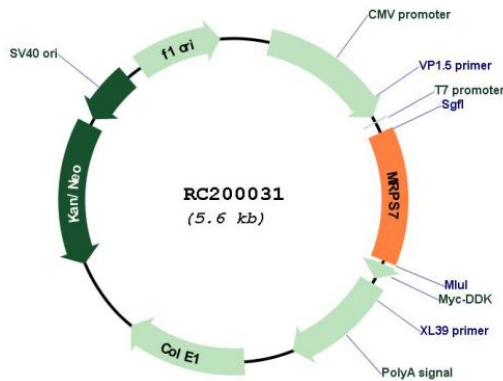
Chromatograms: https://cdn.origene.com/chromatograms/mk6388_a02.zip

Restriction Sites: SgfI-MluI

Cloning Scheme:



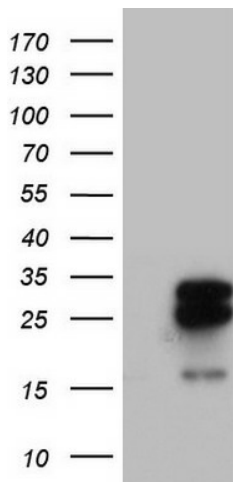
Plasmid Map:



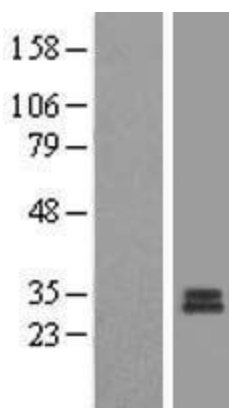
ACCN: NM_015971

ORF Size:	726 bp
OTI Disclaimer:	The molecular sequence of this clone aligns with the gene accession number as a point of reference only. However, individual transcript sequences of the same gene can differ through naturally occurring variations (e.g. polymorphisms), each with its own valid existence. This clone is substantially in agreement with the reference, but a complete review of all prevailing variants is recommended prior to use. More info
OTI Annotation:	This clone was engineered to express the complete ORF with an expression tag. Expression varies depending on the nature of the gene.
RefSeq:	NM_015971.2 , NP_057055.1
RefSeq Size:	1432 bp
RefSeq ORF:	729 bp
Locus ID:	51081
UniProt ID:	Q9Y2R9 , A0A024R8L0
Domains:	Ribosomal_S7
MW:	28.2 kDa
Gene Summary:	Mammalian mitochondrial ribosomal proteins are encoded by nuclear genes and help in protein synthesis within the mitochondrion. Mitochondrial ribosomes (mitoribosomes) consist of a small 28S subunit and a large 39S subunit. They have an estimated 75% protein to rRNA composition compared to prokaryotic ribosomes, where this ratio is reversed. Another difference between mammalian mitoribosomes and prokaryotic ribosomes is that the latter contain a 5S rRNA. Among different species, the proteins comprising the mitoribosome differ greatly in sequence, and sometimes in biochemical properties, which prevents easy recognition by sequence homology. This gene encodes a 28S subunit protein. In the prokaryotic ribosome, the comparable protein is thought to play an essential role in organizing the 3' domain of the 16 S rRNA in the vicinity of the P- and A-sites. Pseudogenes corresponding to this gene are found on chromosomes 8p and 12p. [provided by RefSeq, Jul 2008]

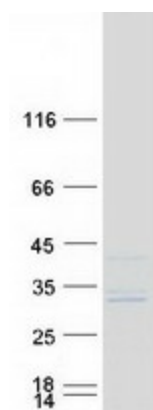
Product images:



HEK293T cells were transfected with the pCMV6-ENTRY control (Cat# [PS100001], Left lane) or pCMV6-ENTRY MRPS7 (Cat# RC200031, Right lane) cDNA for 48 hrs and lysed. Equivalent amounts of cell lysates (5 ug per lane) were separated by SDS-PAGE and immunoblotted with anti-MRPS7(Cat# [TA803297]). Positive lysates [LY414276] (100ug) and [LC414276] (20ug) can be purchased separately from OriGene.



Western blot validation of overexpression lysate (Cat# [LY414276]) using anti-DDK antibody (Cat# [TA50011-100]). Left: Cell lysates from untransfected HEK293T cells; Right: Cell lysates from HEK293T cells transfected with RC200031 using transfection reagent MegaTran 2.0 (Cat# [TT210002]).



Coomassie blue staining of purified MRPS7 protein (Cat# [TP300031]). The protein was produced from HEK293T cells transfected with MRPS7 cDNA clone (Cat# RC200031) using MegaTran 2.0 (Cat# [TT210002]).