

Product datasheet for RC200028L3

METTL9 (NM_016025) Human Tagged Lenti ORF Clone

Product data:

| | |
|---------------------------|--|
| Product Type: | Expression Plasmids |
| Product Name: | METTL9 (NM_016025) Human Tagged Lenti ORF Clone |
| Tag: | Myc-DDK |
| Symbol: | METTL9 |
| Synonyms: | CGI-81; DREV; DREV1; PAP1 |
| Mammalian Cell Selection: | Puromycin |
| Vector: | pLenti-C-Myc-DDK-P2A-Puro (PS100092) |
| E. coli Selection: | Chloramphenicol (34 ug/mL) |
| ORF Nucleotide Sequence: | The ORF insert of this clone is exactly the same as(RC200028). |
| Restriction Sites: | SgfI-MluI |
| Cloning Scheme: | |

Cloning sites used for ORF Shuttling:



* The last codon before the Stop codon of the ORF.

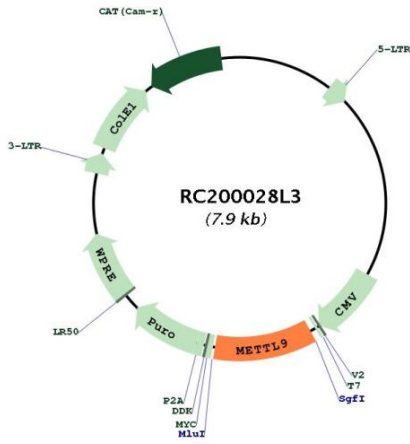
| | |
|-----------|-----------|
| ACCN: | NM_016025 |
| ORF Size: | 954 bp |



[View online »](#)

| | |
|-------------------------------|---|
| OTI Disclaimer: | The molecular sequence of this clone aligns with the gene accession number as a point of reference only. However, individual transcript sequences of the same gene can differ through naturally occurring variations (e.g. polymorphisms), each with its own valid existence. This clone is substantially in agreement with the reference, but a complete review of all prevailing variants is recommended prior to use. More info |
| OTI Annotation: | This clone was engineered to express the complete ORF with an expression tag. Expression varies depending on the nature of the gene. |
| Components: | The ORF clone is ion-exchange column purified and shipped in a 2D barcoded Matrix tube containing 10ug of transfection-ready, dried plasmid DNA (reconstitute with 100 ul of water). |
| Reconstitution Method: | <ol style="list-style-type: none">1. Centrifuge at 5,000xg for 5min.2. Carefully open the tube and add 100ul of sterile water to dissolve the DNA.3. Close the tube and incubate for 10 minutes at room temperature.4. Briefly vortex the tube and then do a quick spin (less than 5000xg) to concentrate the liquid at the bottom.5. Store the suspended plasmid at -20°C. The DNA is stable for at least one year from date of shipping when stored at -20°C. |
| RefSeq: | NM_016025.3 , NP_057109.2 |
| RefSeq Size: | 3267 bp |
| RefSeq ORF: | 957 bp |
| Locus ID: | 51108 |
| UniProt ID: | Q9H1A3 |
| Cytogenetics: | 16p12.2 |
| Domains: | DREV |
| MW: | 32.4 kDa |
| Gene Summary: | Protein-histidine N-methyltransferase that specifically catalyzes 1-methylhistidine (pro-methylhistidine) methylation of target proteins (PubMed:33563959). Mediates methylation of proteins with a His-x-His (HxH) motif (where 'x' is preferably a small amino acid) (PubMed:33563959). Catalyzes methylation of target proteins such as S100A9, NDUFB3, SLC39A5, SLC39A7, ARMC6 and DNAJB12; 1-methylhistidine modification may affect the binding of zinc and other metals to its target proteins (PubMed:33563959). Constitutes the main methyltransferase for the 1-methylhistidine modification in cell (PubMed:33563959). [UniProtKB/Swiss-Prot Function] |

Product images:



Circular map for RC200028L3