

Product datasheet for **RC200026**

GAL4 (LGALS4) (NM_006149) Human Tagged ORF Clone

Product data:

Product Type: Expression Plasmids
Product Name: GAL4 (LGALS4) (NM_006149) Human Tagged ORF Clone
Tag: Myc-DDK
Symbol: GAL4
Synonyms: GAL4; L36LBP
Mammalian Cell Selection: Neomycin
Vector: pCMV6-Entry (PS100001)
E. coli Selection: Kanamycin (25 ug/mL)
ORF Nucleotide Sequence: >RC200026 representing NM_006149
Red=Cloning site Blue=ORF Green=Tags(s)

TTTTGTAATACGACTCACTATAGGGCGGCCGGAATTCGTCGACTGGATCCGGTACCGAGGAGATCTGCC
GCC**CGATCGCC**

ATGGCCTATGTCCCGCACCGGGCTACCAGCCACCTACAACCCGACGCTGCCTTACTACCAGCCCATCC
CGGGCGGGCTCAACGTGGGAATGTCTGTTTACATCCAAGGAGTGGCCAGCGAGCACATGAAGCGTTCTT
CGTGAACTTTGTGGTTGGGCAGGATCCGGGCTCAGACGTCGCCTTCCACTTCAATCCGCGGTTTGACGGC
TGGGACAAGGTGGTCTTCAACACGTTGCAGGGCGGAAGTGGGGCAGCGAGGAGAGGAAGAGGAGCATGC
CCTTCAAAAAGGGTGCCGCTTTGAGCTGGTCTTCATAGTCCTGGCTGAGCACTACAAGGTGGTAA
TGGAAATCCCTTCTATGAGTACGGGCACCGGCTTCCCCTACAGATGGTCAACCCACCTGCAAGTGGATGGG
GATCTGCAACTTCAATCAATCAACTTCATCGGAGGCCAGCCCCTCCGGCCCCAGGACCCCCGATGATGC
CACCTTACCCTGGTCCCGGACATTGCCATCAACAGCTGAACAGCCTGCCACCATGGAAGGACCCCCAAC
CTTCAACCCGCTGTGCCATATTTCCGGAGGCTGCAAGGAGGGCTCACAGCTCGAAGAACCATCATCATC
AAGGGCTATGTGCTCCACAGGCAAGAGCTTTGCTATCAACTTCAAGGTGGGCTCTCAGGGGACATAG
CTCTGCACATTAATCCCCGCATGGGCAACGGTACCGTGGTCCGGAACAGCCTTCTGAATGGCTCGTGGG
ATCCGAGGAGAAGAAGATCACCCACAACCCATTTGGTCCCGGACAGTTCTTTGATCTGCCATTGCTGT
GGCTTGGATCGCTCAAGGTTTACGCCAATGCCAGCACCTTTTGACTTTGCCATCGCCTCTCGGCC
TCCAGAGGGTGGACACATTGAAATCCAGGGTATGTACCTTGTCTATGTCCAGATC

ACGCGTACGCGGCCGCTCGAGCAGAAACTCATCTCAGAAGAGGATCTGGCAGCAAATGATATCCTGGATT
ACAAGGATGACGACGATAAGGTTTAA



[View online »](#)

Protein Sequence: >RC200026 representing NM_006149
Red=Cloning site Green=Tags(s)

MAYVYPAGYQPTYNPTLPYYQPIPGGLNVGMSVYIQGVASEHMKRFFVNFVVGQDPGSDVAFHFNPRFDG
 WDKVVFNTLQGGKVGSEERKRSMPFKKGA AFELVFI VLAEHYKVVVNGNPFYEYGHRLPLQM VTHLQVDG
 DLQLQSINFIGGQPLRPQPPMPPYPGPGHCHQQLNSLPTMEGPPTFNPPVPYFGR LQGGLTARRTIII
 KGYVPPTGKSF AINFKVGS SGI ALHINPRMNGT VVRNSLLNGSWGSEEK KITHNPF GPGQFFDLSIRC
 GLDRFKVYANGQHLDF AHRLSAFQRVDTLEIQGDVTL SYVQI

TRTRPLEQKLISEEDLAANDILDYKDDDDKV

Chromatograms: https://cdn.origene.com/chromatograms/mg3090_e09.zip

Restriction Sites: SgfI-MluI

Cloning Scheme:



ACCN: NM_006149

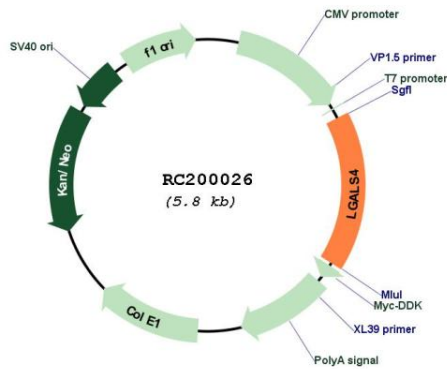
ORF Size: 969 bp

OTI Disclaimer: Due to the inherent nature of this plasmid, standard methods to replicate additional amounts of DNA in E. coli are highly likely to result in mutations and/or rearrangements. Therefore, OriGene does not guarantee the capability to replicate this plasmid DNA. Additional amounts of DNA can be purchased from OriGene with batch-specific, full-sequence verification at a reduced cost. Please contact our customer care team at custsupport@origene.com or by calling 301.340.3188 option 3 for pricing and delivery.

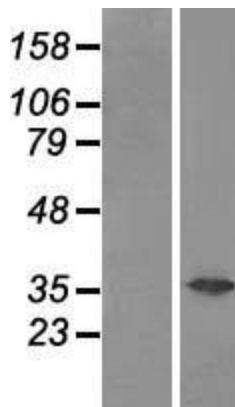
The molecular sequence of this clone aligns with the gene accession number as a point of reference only. However, individual transcript sequences of the same gene can differ through naturally occurring variations (e.g. polymorphisms), each with its own valid existence. This clone is substantially in agreement with the reference, but a complete review of all prevailing variants is recommended prior to use. [More info](#)

OTI Annotation:	This clone was engineered to express the complete ORF with an expression tag. Expression varies depending on the nature of the gene.
Components:	The ORF clone is ion-exchange column purified and shipped in a 2D barcoded Matrix tube containing 10ug of transfection-ready, dried plasmid DNA (reconstitute with 100 ul of water).
Reconstitution Method:	<ol style="list-style-type: none">1. Centrifuge at 5,000xg for 5min.2. Carefully open the tube and add 100ul of sterile water to dissolve the DNA.3. Close the tube and incubate for 10 minutes at room temperature.4. Briefly vortex the tube and then do a quick spin (less than 5000xg) to concentrate the liquid at the bottom.5. Store the suspended plasmid at -20°C. The DNA is stable for at least one year from date of shipping when stored at -20°C.
Note:	Plasmids are not sterile. For experiments where strict sterility is required, filtration with 0.22um filter is required.
RefSeq:	NM_006149.4
RefSeq Size:	1117 bp
RefSeq ORF:	972 bp
Locus ID:	3960
UniProt ID:	P56470
Cytogenetics:	19q13.2
MW:	35.8 kDa
Gene Summary:	The galectins are a family of beta-galactoside-binding proteins implicated in modulating cell-cell and cell-matrix interactions. The expression of this gene is restricted to small intestine, colon, and rectum, and it is underexpressed in colorectal cancer. [provided by RefSeq, Jul 2008]

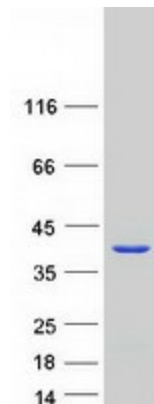
Product images:



Circular map for RC200026



Western blot validation of overexpression lysate (Cat# [LY416836]) using anti-DDK antibody (Cat# [TA50011-100]). Left: Cell lysates from untransfected HEK293T cells; Right: Cell lysates from HEK293T cells transfected with RC200026 using transfection reagent MegaTran 2.0 (Cat# [TT210002]).



Coomassie blue staining of purified LGALS4 protein (Cat# [TP300026]). The protein was produced from HEK293T cells transfected with LGALS4 cDNA clone (Cat# RC200026) using MegaTran 2.0 (Cat# [TT210002]).