

## Product datasheet for **RC200024**

### DBR1 (NM\_016216) Human Tagged ORF Clone

#### Product data:

Product Type:	Expression Plasmids
Product Name:	DBR1 (NM_016216) Human Tagged ORF Clone
Tag:	Myc-DDK
Symbol:	DBR1
Mammalian Cell Selection:	Neomycin
Vector:	pCMV6-Entry (PS100001)
E. coli Selection:	Kanamycin (25 ug/mL)



[View online »](#)

**ORF Nucleotide Sequence:**

>RC200024 ORF sequence  
 Red=Cloning site Blue=ORF Green=Tags(s)

TTTTGTAATACGACTCACTATAGGGCGGCCGGGAATTCGTCGACTGGATCCGGTACCGAGGAGATCTGCC  
 GCC**GCGATCGCC**

ATGCGGGTGGCTGTGGCTGGCTGTGCCACGGCGAGCTGGATAAGATCTATGAGACGCTGGCGCTGGCAG  
 AGCGGCGCGGCCCGGGGCTGTGACCTTTGCTGTGCTGCGGCGACTTCCAGGCGGTGCCAACGAGGC  
 GGATCTACGCTGCATGGCCGTGCCGCCAAGTATCGTCACATGCAAACCTTCTACAGGTATTACTCTGGA  
 GAGAAAAAGGCTCCAGTTCTCACGCTCTTCATTGGGGGAAACCATGAAGCCTCAAATCATTTGCAAGAGT  
 TACCCTATGGTGGCTGGGTGGCACCAAACATTTATTATTAGGTTTGGCTGGTGTGGTAAAAACCGAGG  
 TGTAAGGATCGGTGGAATCTCTGGTATCTTTAAATCTCATGACTATCGAAAAGGTCATTTTGAAGTCCCC  
 CCTTATAATTCATCTACAATCAGGAGTATATATCATGTGAGAAAATTGAAGTCTATAAAATAAAACAGC  
 TGAAGCAGCCTATAGATATATTCTGTCTCATGATTGGCCAAGAAGTATATATCATTATGAAAATAAGAA  
 GCAACTTCTTAAGACTAAATCTTTTTCCGACAAGAAGTGAAAAAACACATTAGGAAGTCCAGCTGCC  
 TCAGAGCTTTTAGAGCATCTCAAACCTACTTATTGGTTTTCTGCCACCTTCATGTGAAGTTTGGCCGCT  
 TGATGCAGCATCAGGCAAAGGATAAAGGACAGACAGCCAGAGCAACCAAAATTTTTCAGCTTGGACAAATG  
 CTTACCACATAGAGATTTTCTTCAGATATTAGAGATAGAACATGACCCCAAGTGTCTCTGATTACTTGGAA  
 TATGATATTGAATGGCTCACTATTCTCAGGGCTACGGATGATCTTATTAATGTGACTGGGCGCCTGTGGA  
 ATATGCCAGAAAATAATGGCCTGCATGCAAGGTGGGATTATAGTGCAACAGAAGAAGGTATGAAAGAAGT  
 ATTGAAAAATGAATCATGATCTCAAGGTTCCATGTAACCTTTAGTGTAAACAGCTGCTTGTATGATCCT  
 AGCAAGCCACAGACACAAATGCAGCTGATTCATAGGATCAATCCTCAGACTACTGAATTTTGTGCCAAC  
 TTGGCATCATAGACATCAATGTTAGGCTTCAGAAGTCCAAGGAAGAACATCATGTGTGGTGAATATGA  
 AGAACAGGATGATGTGGAGAGTAATGACTCTGGAGAAGACCAGAGTGAATAATAACAGACACATCTGCT  
 CTGCTCTTCTATTAATCCAGATGAAATAATGTTAGATGAAGAAGAAGATGAAGATAGTATTGTAAGTGCAC  
 ATAGTGGCATGAATACCCATCGGTAGAACCTTCTGATCAAGCTTCTGAGTTTTCTGCAAGTTTCTCTGA  
 TGTGAGGATCTTGCCAGGCTCTATGATTGTATCTTCTGATGATACGGTGGATTCCACAATTGATAGAGAG  
 GGGAAACCTGGTGGGACTGTGGAGTCAGGGAATGGAGAGGACTTAACCAAGGTGCCATTGAAGAGGCTGA  
 GTGATGAACATGAACCTGAACAAAGAAAGAAAATTAAGAGGAGGAATCAAGCCATTTACGCTGCAGTGA  
 TGATGATGATGATGATGCAGCT

**ACGCGT**ACGCGGCCGCTCGAGCAGAAACTCATCTCAGAAGAGGATCTGGCAGCAAATGATATCCTGGATT  
 ACAAGGATGACGACGATAAGGTTTAA

**Protein Sequence:**

>RC200024 protein sequence  
 Red=Cloning site Green=Tags(s)

MRVAVAGCCHGELDKIYETLALAERRGPGPVDLLLCCGDFQAVRNEADLRCAVPPKYRHMQTFYRYYSG  
 EKKAPVLTIFIGNHEASNHLQELPYGGWVAPNIYYLGLAGVVKYRGVIRIGGISGIFKSHDYRKGHFCEP  
 PYNSSITRSIYHVRNIEVYKQKQKQIDIFLSDWPRSIYHYGNKQLLKTCSFRQEVENNTLGPAA  
 SELLEHLKPTYWFSAPHLHVKFAALMQHQAKDKGQTARATKFLALDKLPHRDFLQILEIEHDPSAPDYLE  
 YDIEWLTILRATDDLINVTGRLWNMPENNLHARWDYSATEEGMKEVLEKLNHDLKVPNFSVTAACYDP  
 SKPQTQMLIHRINPQTTEFCAQLGIIDINVRLQKSKEEHHVCGEYEEQDDVESNDSGEDQSEYNTDTS  
 LSSINPDEIMLDEEEDSIVSAHSGMNTPSVEPSDQASEFSASFSDVIRILPGSMIVSSDDTVDSTIDRE  
 GKPGGTVESNGEDLTKVPLKRLSDEHEPEQRKKIKRRNQAIYAAVDDDDDDAA

**TRTRPLEQKLI**SEEDLAANDILDYKDDDDKV

**Chromatograms:**

[https://cdn.origene.com/chromatograms/mk6674\\_g12.zip](https://cdn.origene.com/chromatograms/mk6674_g12.zip)

**Restriction Sites:**

Sgfl-Mlul

**Cloning Scheme:**


**ACCN:** NM\_016216

**ORF Size:** 1632 bp

**OTI Disclaimer:** Due to the inherent nature of this plasmid, standard methods to replicate additional amounts of DNA in E. coli are highly likely to result in mutations and/or rearrangements. Therefore, OriGene does not guarantee the capability to replicate this plasmid DNA. Additional amounts of DNA can be purchased from OriGene with batch-specific, full-sequence verification at a reduced cost. Please contact our customer care team at [custsupport@origene.com](mailto:custsupport@origene.com) or by calling 301.340.3188 option 3 for pricing and delivery.

The molecular sequence of this clone aligns with the gene accession number as a point of reference only. However, individual transcript sequences of the same gene can differ through naturally occurring variations (e.g. polymorphisms), each with its own valid existence. This clone is substantially in agreement with the reference, but a complete review of all prevailing variants is recommended prior to use. [More info](#)

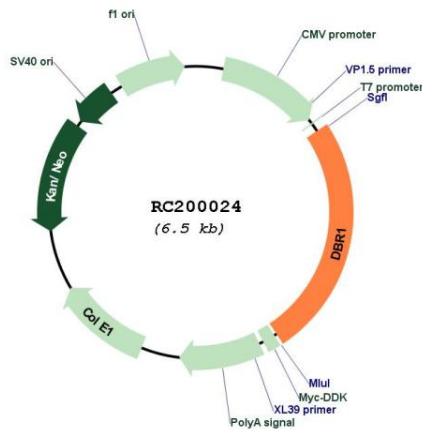
**OTI Annotation:** This clone was engineered to express the complete ORF with an expression tag. Expression varies depending on the nature of the gene.

**Components:** The ORF clone is ion-exchange column purified and shipped in a 2D barcoded Matrix tube containing 10ug of transfection-ready, dried plasmid DNA (reconstitute with 100 ul of water).

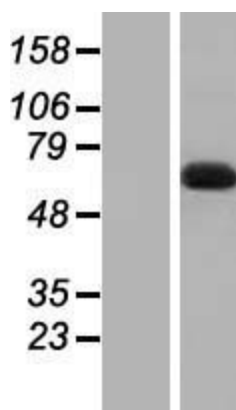
- Reconstitution Method:**
1. Centrifuge at 5,000xg for 5min.
  2. Carefully open the tube and add 100ul of sterile water to dissolve the DNA.
  3. Close the tube and incubate for 10 minutes at room temperature.
  4. Briefly vortex the tube and then do a quick spin (less than 5000xg) to concentrate the liquid at the bottom.
  5. Store the suspended plasmid at -20°C. The DNA is stable for at least one year from date of shipping when stored at -20°C.

<b>Note:</b>	Plasmids are not sterile. For experiments where strict sterility is required, filtration with 0.22um filter is required.
<b>RefSeq:</b>	<u>NM_016216.2, NP_057300.2</u>
<b>RefSeq Size:</b>	2690 bp
<b>RefSeq ORF:</b>	1635 bp
<b>Locus ID:</b>	51163
<b>UniProt ID:</b>	<u>Q9UK59</u>
<b>Cytogenetics:</b>	3q22.3
<b>Domains:</b>	Metallophos, DBR1
<b>MW:</b>	61.6 kDa
<b>Gene Summary:</b>	The protein encoded by this gene is an RNA lariat debranching enzyme that hydrolyzes 2'-5' prime branched phosphodiester bonds. The encoded protein specifically targets the bonds at the branch point of excised lariat intron RNA, converting them to linear molecules that are then degraded. This protein may also be involved in retroviral replication. [provided by RefSeq, Nov 2011]

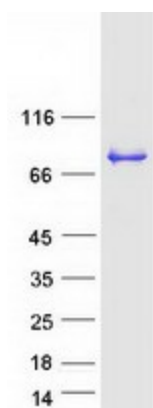
**Product images:**



Circular map for RC200024



Western blot validation of overexpression lysate (Cat# [LY414113]) using anti-DDK antibody (Cat# [TA50011-100]). Left: Cell lysates from untransfected HEK293T cells; Right: Cell lysates from HEK293T cells transfected with RC200024 using transfection reagent MegaTran 2.0 (Cat# [TT210002]).



Coomassie blue staining of purified DBR1 protein (Cat# [TP300024]). The protein was produced from HEK293T cells transfected with DBR1 cDNA clone (Cat# RC200024) using MegaTran 2.0 (Cat# [TT210002]).