

Product datasheet for **RC200021**

GPR89B (NM_016334) Human Tagged ORF Clone

Product data:

Product Type:	Expression Plasmids
Product Name:	GPR89B (NM_016334) Human Tagged ORF Clone
Tag:	Myc-DDK
Symbol:	GPR89B
Synonyms:	GPHR; GPR89; GPR89C; SH120; UNQ192
Mammalian Cell Selection:	Neomycin
Vector:	pCMV6-Entry (PS100001)
E. coli Selection:	Kanamycin (25 ug/mL)



[View online »](#)

ORF Nucleotide Sequence:

>RC200021 ORF sequence
 Red=Cloning site Blue=ORF Green=Tags(s)

TTTTGTAATACGACTCACTATAGGGCGGCCGGAATTCGTCGACTGGATCCGGTACCGAGGAGATCTGCC
 GCC**CGGATCGCC**

ATGAGTTTCCTCATCGACTCCAGCATCATGATTACCTCCCAGATACTATTTTTGGATTGGGTGGCTTT
 TCTTCATGCGCCAATTGTTTAAAGACTATGAGATACGTCAGTATGTTGTACAGGTGATCTTCTCCGTGAC
 GTTTGCATTTTCTGCACCATGTTTGAGCTCATCATCTTTGAAATCTTAGGAGTATTGAATAGCAGCTCC
 CGTTATTTTCACTGGAAAATGAACCTGTGTGAATTCTGCTGATCCTGGTTTTCATGGTGCCTTTTACA
 TTGGCTATTTTATTGTGAGCAATATCCGACTACTGCATAAACAACGACTGCTTTTTCTGTCTCTTATG
 GCTGACCTTTATGATTTCTTCTGGAACTAGGAGATCCCTTTCCATTCTCAGCCAAAACATGGGATC
 TTATCCATAGAACAGCTCATCAGCCGGTTGGTGTGATTGGAGTGACTCTCATGGCTCTTCTTTCTGGAT
 TTGGTGTGTCAACTGCCATACACTTACATGTCTTACTTCTCAGGAATGTGACTGACACGGATATTCT
 AGCCCTGGAACGGCGACTGCTGCAAACCATGGATATGATCATAAGCAAAAAGAAAAGGATGGCAATGGCA
 CGGAGAACAATGTTCCAGAAGGGGGAAGTGCATAACAAACCATCAGGTTTCTGGGGAATGATAAAAAGTG
 TTACCACTTCAGCATCAGGAAGTAAAACTTACTCTTATTCAACAGGAAGTGGATGCTTTGGAAGAATT
 AAGCAGGCAGCTTTTTCTGGAAACAGCTGATCTATATGCTACCAAGGAGAGAATAGAATACTCAAAACC
 TTCAAGGGGAAATATTTAATTTCTTGGTTACTTTTTCTCTATTTACTGTGTTGGAAAATTTTCATGG
 CTACCATCAATATTGTTTTGATCGAGTTGGGAAAACGGATCCTGTCACAAGAGGCATTGAGATCACTGT
 GAATTATCTGGGAATCCAATTTGATGTGAAGTTTTGGTCCCAACATTTCTTCACTTCTGTTGGAATA
 ATCATCGTCACATCCATCAGAGGATTGCTGATCACTCTTACCAAGTCTTTTATGCCATCTTAGCAGTA
 AGTCCCAATGTCATTGCTCTGCTATTAGCACAGATAATGGGCATGTACTTTGTCTCCTCTGTGCTGCT
 GATCCGAATGAGTATGCCTTTAGAATACCGCACCAATAACTCACTGAAGTCCTTGGAGAACTGCAGTTCAAC
 TTCTATACCGTTGGTTTGTGATCTTCTGCTCAGCGCTCTCTCTAGCATACTTCTCTCTATTTGG
 CTCAAAAACAGGCACCAGAGAAGCAATGGCACCT

ACGCGTACGCGGCCGCTCGAGCAGAACTCATCTCAGAAGAGGATCTGGCAGCAATGATATCCTGGATT
 ACAAGGATGACGACGATAAGGTTTAA

Protein Sequence:

>RC200021 protein sequence
 Red=Cloning site Green=Tags(s)

MSFLIDSSIMITSQILFFGFGWLFMRQLFKDYEIRQYVVQVIFSVTFAFSCTMFELIIFEILGVLNSSS
 RYFHWKMNL CVILLILVFMVPFYIGYFIVSNIRLLHKQRLLFSCLLWLFMYFFWKLGDPPFILSPKHGI
 LSIEQLISRVGVIGVTLMLALLSGFGAVNCPYTYMSYFLRNVTDDILALERRLLQTMDMIISKKKRMAMA
 RRTMFQKGEVHNKPSGFWMIKSVTTSAGSSENLTLIQQEVDALEELSRQLFLETADLYATKERIEYSKT
 FKGYFNFLLGYFFSIYCVWKIFMATINIVFDRVGKTDVTRGIEITVNYLGIQFDVKFWSQHISFILVGI
 IIVTSIRGLLITLTKFFYAISSKSSNVIVLLLAQIMGYFVSSVLLIRMSMPLEYRTIITEVLGELQFN
 FYHRWFDVIFLVSALSSILFLYLAKQAPEKQMAP

TRTRPLEQKLISEEDLAANDILDYKDDDDKV

Chromatograms:

https://cdn.origene.com/chromatograms/mk6588_c11.zip

Restriction Sites:

Sgfl-Mlul

Cloning Scheme:


ACCN: NM_016334

ORF Size: 1365 bp

OTI Disclaimer: The molecular sequence of this clone aligns with the gene accession number as a point of reference only. However, individual transcript sequences of the same gene can differ through naturally occurring variations (e.g. polymorphisms), each with its own valid existence. This clone is substantially in agreement with the reference, but a complete review of all prevailing variants is recommended prior to use. [More info](#)

OTI Annotation: This clone was engineered to express the complete ORF with an expression tag. Expression varies depending on the nature of the gene.

Components: The ORF clone is ion-exchange column purified and shipped in a 2D barcoded Matrix tube containing 10ug of transfection-ready, dried plasmid DNA (reconstitute with 100 ul of water).

Reconstitution Method:

1. Centrifuge at 5,000xg for 5min.
2. Carefully open the tube and add 100ul of sterile water to dissolve the DNA.
3. Close the tube and incubate for 10 minutes at room temperature.
4. Briefly vortex the tube and then do a quick spin (less than 5000xg) to concentrate the liquid at the bottom.
5. Store the suspended plasmid at -20°C. The DNA is stable for at least one year from date of shipping when stored at -20°C.

Note: Plasmids are not sterile. For experiments where strict sterility is required, filtration with 0.22um filter is required.

RefSeq: [NM_016334.5](#)

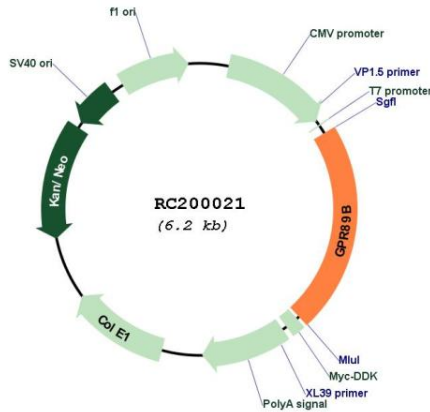
RefSeq Size: 2150 bp

RefSeq ORF: 1368 bp

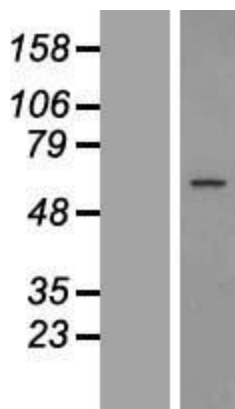
Locus ID: 51463

UniProt ID: B7ZQA6
 Cytogenetics: 1q21.2
 Protein Families: Druggable Genome, GPCR, Transmembrane
 MW: 52.9 kDa

Product images:



Circular map for RC200021



Western blot validation of overexpression lysate (Cat# [LY414043]) using anti-DDK antibody (Cat# [TA50011-100]). Left: Cell lysates from untransfected HEK293T cells; Right: Cell lysates from HEK293T cells transfected with RC200021 using transfection reagent MegaTran 2.0 (Cat# [TT210002]).