

Product datasheet for **RC200020**

TPPP3 (NM_016140) Human Tagged ORF Clone

Product data:

Product Type: Expression Plasmids
Product Name: TPPP3 (NM_016140) Human Tagged ORF Clone
Tag: Myc-DDK
Symbol: TPPP3
Synonyms: CGI-38; p20; p25gamma; TPPP/p20
Mammalian Cell Selection: Neomycin
Vector: pCMV6-Entry (PS100001)
E. coli Selection: Kanamycin (25 ug/mL)
ORF Nucleotide Sequence: >RC200020 ORF sequence
 Red=Cloning site Blue=ORF Green=Tags(s)

TTTTGTAACTACGACTCACTATAGGGCGGCCGGAATTCGTCGACTGGATCCGGTACCGAGGAGATCTGCC
 GCC**CGATCGCC**

ATGGCAGCGAGCACAGACATGGCTGGGCTGGAGGAGAGCTTCGCAAGTTTGCCATCCATGGTGACCCCA
 AGGCCAGTGGCAAGAGATGAATGGCAAGAACTGGGCCAAGCTGTGCAAGGACTGCAAGGTGGCTGACGG
 AAAGTCCGTGACAGGGACCGATGTGGACATCGTCTTCTCCAAAGTCAAGGGGAAGTCTGCTCGGGTCATC
 AACTATGAGGAGTTCAAGAAGGCCCTGGAAGAGCTGGCGACCAAGAGATTCAAGGGGAAGAGCAAGGAGG
 AGGCCCTCGATGCCATCTGCCAGCTGGTGGCAGGCAAAGAGCCAGCCAATGTGGGCGTCACTAAAGCAAA
 AACAGGGGGTGCTGTAGACCGGCTGACGGACACCAAGCAGATACACGGGCTCCCAAGGAGCGCTTCGAT
 GAGAGCGGCAAGGGCAAGGGCATTGCGGGACGGCAGGACATCCTGGACGACAGTGCTACGTGAGCGCCT
 ACAAGAATGCAGGCACCTACGATGCCAAGGTGAAGAAG

ACGCGTACGCGGCCGCTCGAGCAGAACTCATCTCAGAAGAGGATCTGGCAGCAAATGATATCCTGGATT
 ACAAGGATGACGACGATAAGGTTTAA

Protein Sequence: >RC200020 protein sequence
 Red=Cloning site Green=Tags(s)

MAASTDMAGLEESFRKFAIHGDPKASGQEMNGKNWAKLCKDCKVADGKSVTGTVDIVFSKVKGKSARVI
 NYEEFKALEELATKRFKGSKEEAFDAICQLVAGKEPANVGVTAKTGGAVDRLTDTSRYTGSHKERFD
 ESGKGKIAGRQDILDDSGYVSAYKNAGTYDAKVKK

TRTRPLEQKLISEEDLAANDILDYKDDDDKV

Chromatograms: https://cdn.origene.com/chromatograms/mk6399_b10.zip



View online »

Restriction Sites: SgfI-MluI

Cloning Scheme:



ACCN: NM_016140

ORF Size: 528 bp

OTI Disclaimer: The molecular sequence of this clone aligns with the gene accession number as a point of reference only. However, individual transcript sequences of the same gene can differ through naturally occurring variations (e.g. polymorphisms), each with its own valid existence. This clone is substantially in agreement with the reference, but a complete review of all prevailing variants is recommended prior to use. [More info](#)

OTI Annotation: This clone was engineered to express the complete ORF with an expression tag. Expression varies depending on the nature of the gene.

Components: The ORF clone is ion-exchange column purified and shipped in a 2D barcoded Matrix tube containing 10ug of transfection-ready, dried plasmid DNA (reconstitute with 100 ul of water).

Reconstitution Method:

1. Centrifuge at 5,000xg for 5min.
2. Carefully open the tube and add 100ul of sterile water to dissolve the DNA.
3. Close the tube and incubate for 10 minutes at room temperature.
4. Briefly vortex the tube and then do a quick spin (less than 5000xg) to concentrate the liquid at the bottom.
5. Store the suspended plasmid at -20°C. The DNA is stable for at least one year from date of shipping when stored at -20°C.

RefSeq: [NM_016140.4](#)

RefSeq Size: 1159 bp

RefSeq ORF: 531 bp

Locus ID: 51673

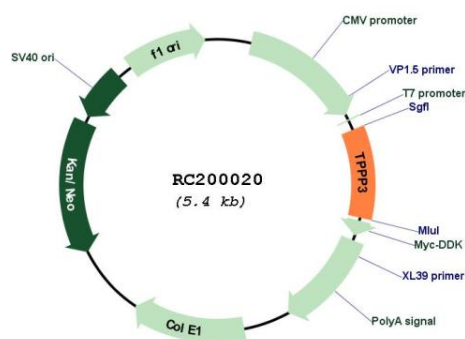
UniProt ID: [Q9BW30](#)

Cytogenetics: 16q22.1

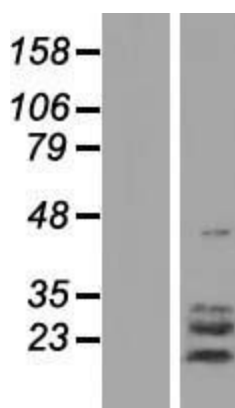
MW: 19 kDa

Gene Summary: Binds tubulin and has microtubule bundling activity. May play a role in cell proliferation and mitosis.[UniProtKB/Swiss-Prot Function]

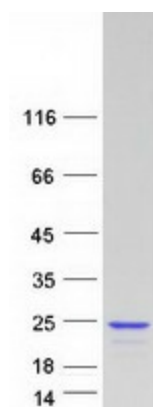
Product images:



Circular map for RC200020



Western blot validation of overexpression lysate (Cat# [LY414281]) using anti-DDK antibody (Cat# [TA50011-100]). Left: Cell lysates from untransfected HEK293T cells; Right: Cell lysates from HEK293T cells transfected with [RC212586] using transfection reagent MegaTran 2.0 (Cat# [TT210002]).



Coomassie blue staining of purified TPPP3 protein (Cat# [TP300020]). The protein was produced from HEK293T cells transfected with TPPP3 cDNA clone (Cat# RC200020) using MegaTran 2.0 (Cat# [TT210002]).