

Product datasheet for **RC200018**

LCMT1 (NM_016309) Human Tagged ORF Clone

Product data:

Product Type: Expression Plasmids
Product Name: LCMT1 (NM_016309) Human Tagged ORF Clone
Tag: Myc-DDK
Symbol: LCMT1
Synonyms: CGI-68; LCMT; PPMT1
Vector: pCMV6-Entry (PS100001)
E. coli Selection: Kanamycin (25 ug/mL)
Cell Selection: Neomycin
ORF Nucleotide Sequence: >RC200018 ORF sequence
Red=Cloning site Blue=ORF Green=Tags(s)

TTTTGTAATACGACTCACTATAGGGCGGCCGGAATTCGTCGACTGGATCCGGTACCGAGGAGATCTGCC
GCC**GCGATCGCC**

ATGGCCACTAGGCAGAGGAATCCTCTATCACCTCCTGCTGTTCCACCTCGAGCTGCGACGCAGACGACG
AGGGCGTGCAGCCACCTGCGAAGATGCTTCCCTGTGCAAGAGGTTTGCAGTAAGCATTGGCTACTGGCA
TGACCCCTTACATACAGCACTTTGTGAGACTGTCTAAAGAGAGGAAAGCCCTGAAATCAACAGAGGATAT
TTTGCTCGAGTCCATGGTGTGAGTCAAGTATAAAGGCATTTCTACGGAAGACAGAATGTCATTGTCAAA
TTGTCAACCTTGGGCGAGGCATGGATACCACCTTCTGGAGATTAAGGATGAAGATCTTCTCCCAAGTAA
ATATTTTGAGGTTGACTTCCAATGATTGTACGAGAAAGCTGCACAGTATCAAATGCAAGCCTCCCTCA
TCCAGCCCATTCTAGAAGTGCATTGAGAGCACACTTCAGATGGATGGACACATACTGGATTCAAAGA
GATATGCCGTTATTGGAGCAGATCTCCGAGACCTGTCTGAACTGGAAGAGAAGCTAAAGAAATGTAACAT
GAATACACAATTGCCAACACTCCTGATAGCTGAATGTGTGCTGGTTTACATGACTCCAGAGCAGTCCGCA
AACCTCCTGAAGTGGGCGAGCAACAGTTTTGAGAGAGCCATGTTCAAACTACGAACAGGTGAACATGG
GTGATCGGTTTGGGCGAGTCAATGATTGAAAACCTGCGGAGAGCCAGTGTGACCTGGCGGAGTGGAGAC
CTGCAAGTCATTAGAGTACAGAAAGAACGGCTCCTGTGCAATGGGTGGGAAACAGCATCGGCCGTCGAC
ATGATGGAGTTGTACAACAGTTACCTCGAGCTGAAGTGAGCAGGATAGAATCACTTGAATTCCTGGATG
AAATGGAGCTGCTGGAGCAGCTCATGCGCATTACTGCCTTTGCTGGGCAACCAAGGAGGAAATGAGCT
TGGGCTGAAGGAGATAACTTAT

ACGCGTACGCGGCCGCTCGAGCAGAAACTCATCTCAGAAGAGGATCTGGCAGCAATGATATCCTGGATT
ACAAGGATGACGACGATAAGGTTTAA



[View online »](#)

Protein Sequence: >RC200018 protein sequence
 Red=Cloning site Green=Tags(s)

MATRQRESSITSCCSTSSCDADDEGVRGTCEDASLCKRFVAVSIGYWHDPYIQHFVRLSKERKAPEINRGY
 FARVHGVSQLIKAF LRKTECHCQIVNLGAGMDTTFWRLKDEDLLPSKYFEVDFPMIVTRKLHSIKCKPPL
 SSPILELHSEDTLQMDGHILDSKRYAVIGADLRDLSELEEKLKKCNMNTQLPTLLIAECVLVYMTPEQSA
 NLLKWAANSFERAMFINYEQVNMGDRFGQIMIENLRRRQCDLAGVETCKSLESQKERLLSNGWETASAVD
 MMELYNRLPRAEVSRIESLEFLDEMELEQLMRHYCLCWATKGGNELGLKEITY

TRTRPLEQKLISEEDLAANDILDYKDDDDKV

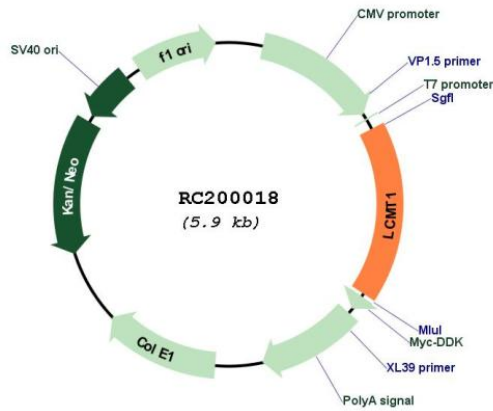
Chromatograms: https://cdn.origene.com/chromatograms/mk6396_b11.zip

Restriction Sites: SgfI-MluI

Cloning Scheme:

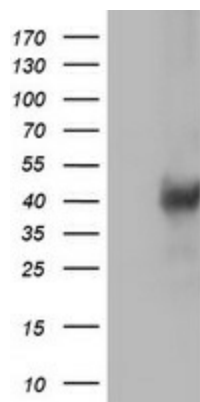


Plasmid Map:

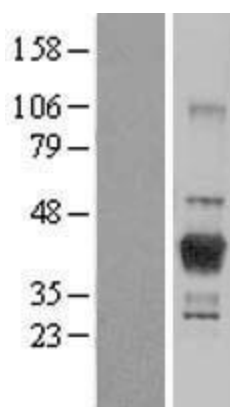


ACCN: NM_016309

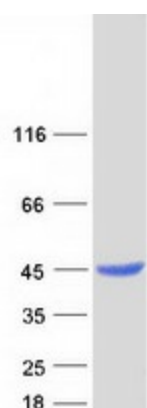
ORF Size:	1002 bp
OTI Disclaimer:	The molecular sequence of this clone aligns with the gene accession number as a point of reference only. However, individual transcript sequences of the same gene can differ through naturally occurring variations (e.g. polymorphisms), each with its own valid existence. This clone is substantially in agreement with the reference, but a complete review of all prevailing variants is recommended prior to use. More info
OTI Annotation:	This clone was engineered to express the complete ORF with an expression tag. Expression varies depending on the nature of the gene.
Components:	The ORF clone is ion-exchange column purified and shipped in a 2D barcoded Matrix tube containing 10ug of transfection-ready, dried plasmid DNA (reconstitute with 100 ul of water).
Reconstitution Method:	<ol style="list-style-type: none">1. Centrifuge at 5,000xg for 5min.2. Carefully open the tube and add 100ul of sterile water to dissolve the DNA.3. Close the tube and incubate for 10 minutes at room temperature.4. Briefly vortex the tube and then do a quick spin (less than 5000xg) to concentrate the liquid at the bottom.5. Store the suspended plasmid at -20°C. The DNA is stable for at least one year from date of shipping when stored at -20°C.
RefSeq:	NM_016309.3
RefSeq Size:	1374 bp
RefSeq ORF:	1005 bp
Locus ID:	51451
UniProt ID:	Q9UIC8
Cytogenetics:	16p12.1
Domains:	LCM
Protein Pathways:	Androgen and estrogen metabolism, Histidine metabolism, Selenoamino acid metabolism, Tyrosine metabolism
MW:	38.4 kDa
Gene Summary:	LCMT1 catalyzes the methylation of the carboxyl group of the C-terminal leucine residue (leu309) of the catalytic subunit of protein phosphatase-2A (PPP2CA; MIM 176915) (De Baere et al., 1999 [PubMed 10600115]).[supplied by OMIM, Mar 2008]

Product images:


HEK293T cells were transfected with the pCMV6-ENTRY control (Cat# [PS100001], Left lane) or pCMV6-ENTRY LCMT1 (Cat# RC200018, Right lane) cDNA for 48 hrs and lysed. Equivalent amounts of cell lysates (5 ug per lane) were separated by SDS-PAGE and immunoblotted with anti-LCMT1 (Cat# [TA503125]). Positive lysates [LY414046] (100ug) and [LC414046] (20ug) can be purchased separately from OriGene.



Western blot validation of overexpression lysate (Cat# [LY414046]) using anti-DDK antibody (Cat# [TA50011-100]). Left: Cell lysates from untransfected HEK293T cells; Right: Cell lysates from HEK293T cells transfected with RC200018 using transfection reagent MegaTran 2.0 (Cat# [TT210002]).



Coomassie blue staining of purified LCMT1 protein (Cat# [TP300018]). The protein was produced from HEK293T cells transfected with LCMT1 cDNA clone (Cat# RC200018) using MegaTran 2.0 (Cat# [TT210002]).