

## Product datasheet for RC200017

### DHRS7 (NM\_016029) Human Tagged ORF Clone

#### Product data:

Product Type:	Expression Plasmids
Product Name:	DHRS7 (NM_016029) Human Tagged ORF Clone
Tag:	Myc-DDK
Symbol:	DHRS7
Synonyms:	CGI-86; retDSR4; retSDR4; SDR34C1
Mammalian Cell Selection:	Neomycin
Vector:	pCMV6-Entry (PS100001)
E. coli Selection:	Kanamycin (25 ug/mL)
ORF Nucleotide Sequence:	>RC200017 representing NM_016029 Red=Cloning site Blue=ORF Green=Tags(s)

TTTTGTAATACGACTCACTATAGGGCGGCCGGAATTCGTCGACTGGATCCGGTACCGAGGAGATCTGCC  
GCC**CGATCGCC**

ATGAAGTGGGAGCTGCTGCTGTGGCTGCTGGTGTGTGCGCGCTGCTCCTGCTCTTGGTGCAGCTGCTGC  
GCTTCCTGAGGGCTGACGGCAGCTGACGCTACTATGGGCCGAGTGCCAGGGACGACGCCAGAATGGGA  
GCTGACTGATATGGTGGTGTGGGTGACTGGAGCCTCGAGTGAATTGGTGAAGGAGCTGGCTTACCAGTTG  
TCTAAACTAGGAGTTTCTTGTGCTGTCAGCCAGAAGAGTGCATGAGCTGGAAAGGGTAAAAGAAGAT  
GCCTAGAGAATGGCAATTTAAAAGAAAAAGATATACTTGTTTTGCCCTTGACCTGACCGACACTGGTTC  
CCATGAAGCGGCTACAAAGCTGTTCTCCAGGAGTTGGTAGAATCGACATTCTGGTCAACAATGGTGGA  
ATGTCCCAGCGTTCTCTGTGCATGGATACCAGCTTGGATGTCTACAGAAAGCTAATAGAGCTTAACTACT  
TAGGGACGGTGTCTTGACAAAATGTGTTCTGCCTCACATGATCGAGAGGAAGCAAGGAAAGATTGTTAC  
TGTGAATAGCATCCTGGGTATCATATCTGTACCTTTCCATTGGATACTGTGCTAGCAAGCATGCTCTC  
CGGGGTTTTTTAATGGCCTTCGAACAGAACTTGCCACATACCCAGGTATAATAGTTTCTAACATTTGCC  
CAGGACCTGTGCAATCAAATATTGTGGAGAATTCCTAGCTGGAGAAGTCACAAAGACTATAGGCAATAA  
TGGAGACCAGTCCACAAGATGACAACCACTGTTGTGTGCGGCTGATGTTAATCAGCATGGCCAATGAT  
TTGAAAGAAGTTTGGATCTCAGAACAACCTTTCTTGTAGTAACATATTTGTGGCAATACATGCCAACCT  
GGCCTGGTGGATAACCAACAAGATGGGGAAGAAAAGGATTGAGAACTTTAAGAGTGGTGTGGATGCAGA  
CTCTTCTATTTTAAAATCTTTAAGACAAAACATGAC

**ACGCGT**ACGCGGCCGCTCGAGCAGAAACTCATCTCAGAAGAGGATCTGGCAGCAATGATATCCTGGATT  
ACAAGGATGACGACGATAAGGTTTAA



[View online »](#)

**Protein Sequence:** >RC200017 representing NM\_016029  
Red=Cloning site Green=Tags(s)

MNWELLWLLVLCALLLLLVQLRFLRADGDLTLLWAEWQGRPEWELTDMVVVVTGASSGIGEELAYQL  
 SKLGVSLVLSARRVHELERYKRRCLENGLKEKDILVPLDLTDTSHEAATKAVLQEFGRIDILVNNGG  
 MSQRSLCMDTSLDVYRKLIELNLTGTVSLTKCVLPHMIERKQGGKIVTVNSILGIISVPLSIGYCASKHAL  
 RGFENGLRTELATYPGIIVSNICPGPVQSNIVENSLAGEVTKTIGNNGDQSHKMTT SRCVRLMLISMAND  
 LKEVWISEQPFLLVTYLWQYMPWAWWIITNKMGGKRIENFKSGVDADSSYFKIFKTKHD

TRTRPLEQKLISEEDLAANDILDYKDDDDKV

**Chromatograms:** [https://cdn.origene.com/chromatograms/ja1558\\_e04.zip](https://cdn.origene.com/chromatograms/ja1558_e04.zip)

**Restriction Sites:** SgfI-MluI

**Cloning Scheme:**

Cloning sites used for ORF Shutting:



\* The last codon before the Stop codon of the ORF

**ACCN:** NM\_016029

**ORF Size:** 1017 bp

**OTI Disclaimer:** The molecular sequence of this clone aligns with the gene accession number as a point of reference only. However, individual transcript sequences of the same gene can differ through naturally occurring variations (e.g. polymorphisms), each with its own valid existence. This clone is substantially in agreement with the reference, but a complete review of all prevailing variants is recommended prior to use. [More info](#)

**OTI Annotation:** This clone was engineered to express the complete ORF with an expression tag. Expression varies depending on the nature of the gene.

**Components:** The ORF clone is ion-exchange column purified and shipped in a 2D barcoded Matrix tube containing 10ug of transfection-ready, dried plasmid DNA (reconstitute with 100 ul of water).

**Reconstitution Method:**

1. Centrifuge at 5,000xg for 5min.
2. Carefully open the tube and add 100ul of sterile water to dissolve the DNA.
3. Close the tube and incubate for 10 minutes at room temperature.
4. Briefly vortex the tube and then do a quick spin (less than 5000xg) to concentrate the liquid at the bottom.
5. Store the suspended plasmid at -20°C. The DNA is stable for at least one year from date of shipping when stored at -20°C.

**Note:** Plasmids are not sterile. For experiments where strict sterility is required, filtration with 0.22um filter is required.

**RefSeq:** [NM\\_016029.4](#)

**RefSeq Size:** 1282 bp

**RefSeq ORF:** 1020 bp

**Locus ID:** 51635

**UniProt ID:** [Q9Y394](#)

**Cytogenetics:** 14q23.1

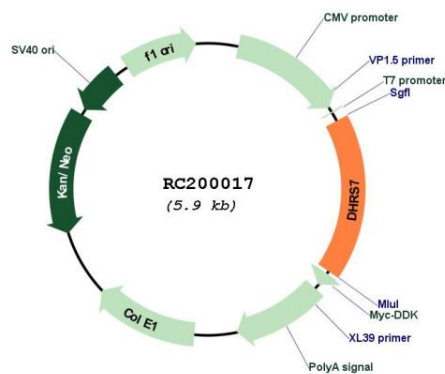
**Domains:** adh\_short

**Protein Families:** Druggable Genome, Transmembrane

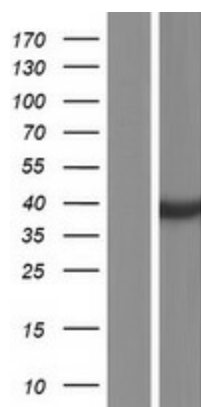
**MW:** 38.1 kDa

**Gene Summary:** This gene encodes a member of the short-chain dehydrogenases/reductases (SDR) family, which has over 46,000 members. Members in this family are enzymes that metabolize many different compounds, such as steroid hormones, prostaglandins, retinoids, lipids and xenobiotics. [provided by RefSeq, Apr 2016]

### Product images:



Circular map for RC200017



Western blot validation of overexpression lysate (Cat# [LY414239]) using anti-DDK antibody (Cat# [TA50011-100]). Left: Cell lysates from untransfected HEK293T cells; Right: Cell lysates from HEK293T cells transfected with RC200017 using transfection reagent MegaTran 2.0 (Cat# [TT210002]).