

## Product datasheet for **RC200016**

### **C14orf166 (RTRAF) (NM\_016039) Human Tagged ORF Clone**

#### Product data:

Product Type:	Expression Plasmids
Product Name:	C14orf166 (RTRAF) (NM_016039) Human Tagged ORF Clone
Tag:	Myc-DDK
Symbol:	C14orf166
Synonyms:	C14orf166; CGI-99; CGI99; CLE; CLE7; hCLE; hCLE1; LCRP369; RLLM1
Mammalian Cell Selection:	Neomycin
Vector:	pCMV6-Entry (PS100001)
E. coli Selection:	Kanamycin (25 ug/mL)
ORF Nucleotide Sequence:	>RC200016 ORF sequence Red=Cloning site Blue=ORF Green=Tags(s)

TTTTGTAATACGACTCACTATAGGGCGGCCGGAATTCGTCGACTGGATCCGGTACCGAGGAGATCTGCC  
GCC**CGATCGCC**

ATGTTCCGACGCAAGTTGACGGCTCTCGACTACCAACCCCGCGGCTTCAACTGCAAAGATGAAACAG  
AATTTAGAACTTCATCGTTTGGCTTGAAGACCAGAAAATCAGGCACTACAAGATTGAAGACAGAGGGAA  
TTAAGAAACATCCACAGCAGCGACTGGCCCAAGTTCTTTGAAAAGTATCTCAGAGATGTTAACTGTCT  
TTCAAGATTCAAGATCGACAAGAAGCTATTGACTGGCTTCTTGGTTTAGCTGTTAGACTTGAATATGGAG  
ATAATGCTGAAAATACAAGATTTAGTACCTGATAATTCAAAACACTGCTGACAATGCAACTAAAAATGC  
AGAACCATTGATCAATTTGGATGTAATAATCCTGATTTAAGGCTGGTGTGATGGCTTTGGCTAACCTG  
CTTCAGATTACGCGTCATGATGATTACCTGGTAATGCTTAAGGCAATTCGATTTTGGTTCAGGAGCGCC  
TGACACAGGATGCAGTTGCTAAGGCAAATCAAACAAAAGAGGGCTTACCTGTTGCTTTAGACAAACATAT  
TCTTGGTTTTGACACAGGAGATGCAGTTCTTAATGAAGCTGCTCAAATCTGCGATTGCTGCACATAGAG  
GAGCTCAGAGAGCTACAGACAAAATCAACGAAGCCATAGTAGCTGTTCCAGGCAATTATTGCTGATCCAA  
AGACAGACCACAGACTGGGAAAAGTTGGAAGA

**ACGCGT**ACGCGGCCGCTCGAGCAGAACTCATCTCAGAAGAGGATCTGGCAGCAAATGATATCCTGGATT  
ACAAGGATGACGACGATAAGGTTTAA



[View online »](#)

**Protein Sequence:** >RC200016 protein sequence  
 Red=Cloning site Green=Tags(s)

MFRRKLTALDYHNPAGFNCKDETEFRNFIVWLEDQKIRHYKIEDRGNLRNIHSSDWPKFFEKYLRDVNCP  
 FKIQDRQEAIWLLGLAVRLEYGDNAEKYKDLVPDNSKTADNATKNAEPLINLDVNNPDFKAGVMALANL  
 LQIQRHDDYL VMLKAIRILVQERLTQDAVAKANQTK EGLPVALDKHILGFDTGD AVLNEAAQILRLHLHIE  
 ELRELQTKINEAIVAVQAI IADPKTDHRLGKVGR

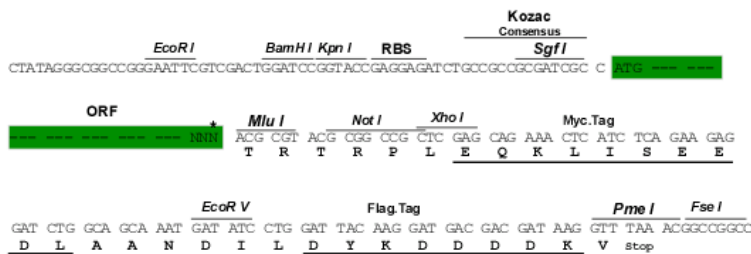
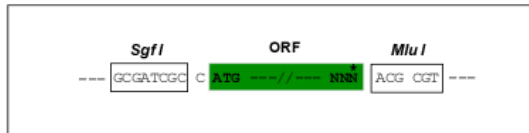
TRTRPLEQKLISEEDLAANDILDYKDDDDKV

**Chromatograms:** [https://cdn.origene.com/chromatograms/mk6394\\_e01.zip](https://cdn.origene.com/chromatograms/mk6394_e01.zip)

**Restriction Sites:** SgfI-MluI

**Cloning Scheme:**

Cloning sites used for ORF Shuttling:



\* The last codon before the Stop codon of the ORF

**ACCN:** NM\_016039

**ORF Size:** 732 bp

**OTI Disclaimer:** The molecular sequence of this clone aligns with the gene accession number as a point of reference only. However, individual transcript sequences of the same gene can differ through naturally occurring variations (e.g. polymorphisms), each with its own valid existence. This clone is substantially in agreement with the reference, but a complete review of all prevailing variants is recommended prior to use. [More info](#)

**OTI Annotation:** This clone was engineered to express the complete ORF with an expression tag. Expression varies depending on the nature of the gene.

**Components:** The ORF clone is ion-exchange column purified and shipped in a 2D barcoded Matrix tube containing 10ug of transfection-ready, dried plasmid DNA (reconstitute with 100 ul of water).

**Reconstitution Method:**

1. Centrifuge at 5,000xg for 5min.
2. Carefully open the tube and add 100ul of sterile water to dissolve the DNA.
3. Close the tube and incubate for 10 minutes at room temperature.
4. Briefly vortex the tube and then do a quick spin (less than 5000xg) to concentrate the liquid at the bottom.
5. Store the suspended plasmid at -20°C. The DNA is stable for at least one year from date of shipping when stored at -20°C.

**Note:** Plasmids are not sterile. For experiments where strict sterility is required, filtration with 0.22um filter is required.

**RefSeq:** [NM\\_016039.3](#)

**RefSeq Size:** 1064 bp

**RefSeq ORF:** 735 bp

**Locus ID:** 51637

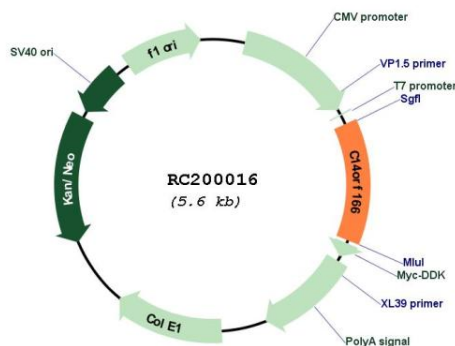
**UniProt ID:** [Q9Y224](#)

**Cytogenetics:** 14q22.1

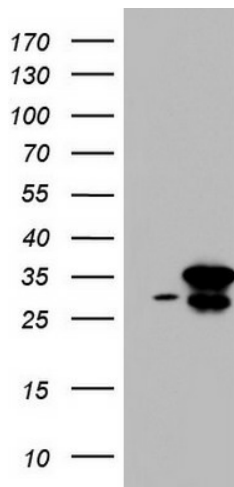
**MW:** 28.1 kDa

**Gene Summary:** RNA-binding protein involved in modulation of mRNA transcription by Polymerase II (PubMed:16950395). Component of the tRNA-splicing ligase complex and is required for tRNA ligation (PubMed:24870230). May be required for RNA transport (PubMed:24608264). [UniProtKB/Swiss-Prot Function]

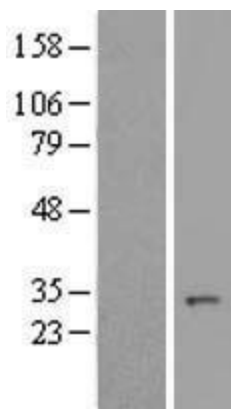
**Product images:**



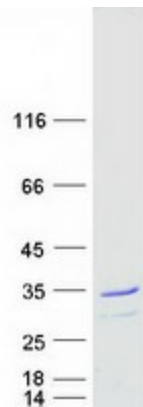
Circular map for RC200016



HEK293T cells were transfected with the pCMV6-ENTRY control (Cat# [PS100001], Left lane) or pCMV6-ENTRY C14orf166 (Cat# RC200016, Right lane) cDNA for 48 hrs and lysed. Equivalent amounts of cell lysates (5 ug per lane) were separated by SDS-PAGE and immunoblotted with anti-C14orf166(Cat# [TA803840]). Positive lysates [LY414235] (100ug) and [LC414235] (20ug) can be purchased separately from OriGene.



Western blot validation of overexpression lysate (Cat# [LY414235]) using anti-DDK antibody (Cat# [TA50011-100]). Left: Cell lysates from untransfected HEK293T cells; Right: Cell lysates from HEK293T cells transfected with RC200016 using transfection reagent MegaTran 2.0 (Cat# [TT210002]).



Coomassie blue staining of purified RTRAF protein (Cat# [TP300016]). The protein was produced from HEK293T cells transfected with RTRAF cDNA clone (Cat# RC200016) using MegaTran 2.0 (Cat# [TT210002]).