

## Product datasheet for RC200015

### PPIL1 (NM\_016059) Human Tagged ORF Clone

#### Product data:

**Product Type:** Expression Plasmids  
**Product Name:** PPIL1 (NM\_016059) Human Tagged ORF Clone  
**Tag:** Myc-DDK  
**Symbol:** PPIL1  
**Synonyms:** CGI-124; CYPL1; hCyPX; PCH14; PPlase  
**Mammalian Cell Selection:** Neomycin  
**Vector:** pCMV6-Entry (PS100001)  
**E. coli Selection:** Kanamycin (25 ug/mL)  
**ORF Nucleotide Sequence:** >RC200015 ORF sequence  
 Red=Cloning site Blue=ORF Green=Tags(s)

TTTGTAAATACGACTCACTATAGGGCGGCCGGAATTCGTCGACTGGATCCGGTACCGAGGAGATCTGCC  
 GCCGCGATCGCC

ATGGCGGCAATCCCCAGATTCCTGGCAGCCACCCAACGTTTACTTGGAGACCAGCATGGGAATCATTG  
 TGCTGGAGCTGTACTGGAAGCATGCTCCAAAGACCTGTAAGAATTTGCTGAGTTGGCTCGTCGAGGTTA  
 CTACAATGGCAGAAAATCCACAGAATTATCAAAGACTTCATGATCAAGGAGGTGACCCAACAGGGACA  
 GGTGAGGTGGTCATCTATCTATGGCAAACAGTTTGAAGATGAAGTTCATCCAGACTTGAAATTCACGG  
 GGGCTGGAATTCGCAATGGCCAATGCGGGGCCAGATACCAATGGCAGCCAGTTCTTTGTGACCCTCGC  
 CCCACCCAGTGGCTTGACGGCAAACACACCATTTTGGCCGAGTGTGTCAGGGCATAGGAATGGTGAAT  
 CGCGTGGGAATGGTAGAAACAACTCCCAGGACCGCCCTGTGGACGACGTGAAGATCATTAAAGGCATACC  
 CTTCTGGG

ACGCGTACGCGGCCGCTCGAGCAGAACTCATCTCAGAAGAGGATCTGGCAGCAAATGATATCCTGGATT  
 ACAAGGATGACGACGATAAGGTTTAA

**Protein Sequence:** >RC200015 protein sequence  
 Red=Cloning site Green=Tags(s)

MAAIPDSWQPPNVYLETSMGIIVLELYWKHAPKTCKNFAELARRGYNGTKFHRIKDFMIQGGDPTGT  
 GRGGASIVGKQFEDELHPDLKFTGAGILAMANAGPDTNGSQFFVTLAPTQWLDGKHTIFGRVCQIGIMVN  
 RVGMVETNSQDRPVDDVKIHKAYPSG

TRTRPLEQKLISEEDLAANDILDYKDDDDKV

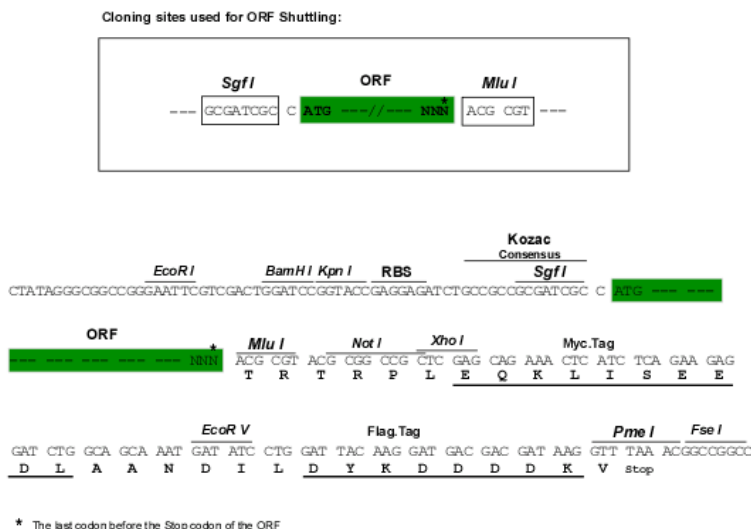
**Chromatograms:** [https://cdn.origene.com/chromatograms/mk6393\\_h05.zip](https://cdn.origene.com/chromatograms/mk6393_h05.zip)


[View online »](#)



**Restriction Sites:** SgfI-MluI

**Cloning Scheme:**



**ACCN:** NM\_016059

**ORF Size:** 498 bp

**OTI Disclaimer:** The molecular sequence of this clone aligns with the gene accession number as a point of reference only. However, individual transcript sequences of the same gene can differ through naturally occurring variations (e.g. polymorphisms), each with its own valid existence. This clone is substantially in agreement with the reference, but a complete review of all prevailing variants is recommended prior to use. [More info](#)

**OTI Annotation:** This clone was engineered to express the complete ORF with an expression tag. Expression varies depending on the nature of the gene.

**Components:** The ORF clone is ion-exchange column purified and shipped in a 2D barcoded Matrix tube containing 10ug of transfection-ready, dried plasmid DNA (reconstitute with 100 ul of water).

**Reconstitution Method:**

1. Centrifuge at 5,000xg for 5min.
2. Carefully open the tube and add 100ul of sterile water to dissolve the DNA.
3. Close the tube and incubate for 10 minutes at room temperature.
4. Briefly vortex the tube and then do a quick spin (less than 5000xg) to concentrate the liquid at the bottom.
5. Store the suspended plasmid at -20°C. The DNA is stable for at least one year from date of shipping when stored at -20°C.

**RefSeq:** [NM\\_016059.5](#)

**RefSeq Size:** 1750 bp

**RefSeq ORF:** 501 bp

**Locus ID:** 51645

**UniProt ID:** [Q9Y3C6](#)



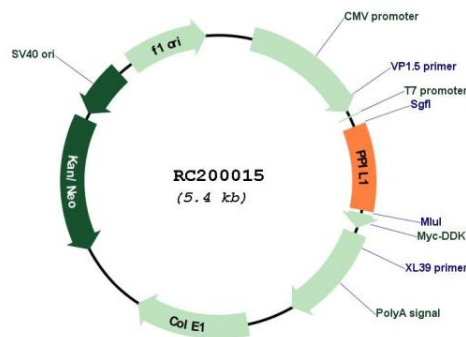
Cytogenetics: 6p21.2

Protein Pathways: Spliceosome

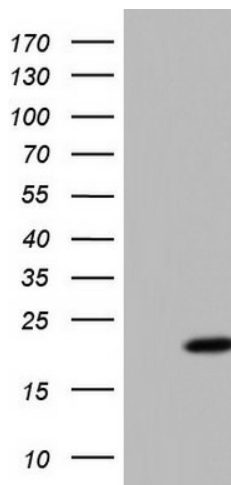
MW: 18.2 kDa

**Gene Summary:** This gene is a member of the cyclophilin family of peptidylprolyl isomerases (PPIases). The cyclophilins are a highly conserved, ubiquitous family, members of which play an important role in protein folding, immunosuppression by cyclosporin A, and infection of HIV-1 virions. Based on similarity to other PPIases, this protein could accelerate the folding of proteins and might catalyze the cis-trans isomerization of proline imidic peptide bonds in oligopeptides. [provided by RefSeq, Jul 2008]

## Product images:

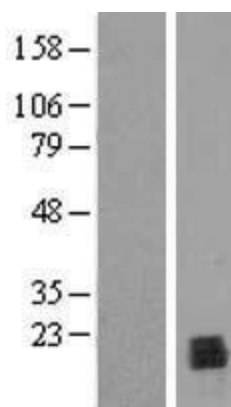


Circular map for RC200015

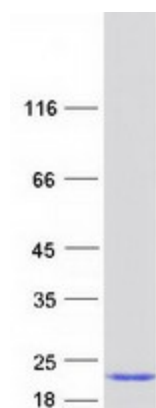


HEK293T cells were transfected with the pCMV6-ENTRY control (Cat# [PS100001], Left lane) or pCMV6-ENTRY PPIL1 (Cat# RC200015, Right lane) cDNA for 48 hrs and lysed. Equivalent amounts of cell lysates (5 ug per lane) were separated by SDS-PAGE and immunoblotted with anti-PPIL1 (Cat# [TA803692]). Positive lysates [LY414224] (100ug) and [LC414224] (20ug) can be purchased separately from OriGene.





Western blot validation of overexpression lysate (Cat# [LY414224]) using anti-DDK antibody (Cat# [TA50011-100]). Left: Cell lysates from untransfected HEK293T cells; Right: Cell lysates from HEK293T cells transfected with RC200015 using transfection reagent MegaTran 2.0 (Cat# [TT210002]).



Coomassie blue staining of purified PPIL1 protein (Cat# [TP300015]). The protein was produced from HEK293T cells transfected with PPIL1 cDNA clone (Cat# RC200015) using MegaTran 2.0 (Cat# [TT210002]).