

Product datasheet for **RC200011**

PSF2 (GINS2) (NM_016095) Human Tagged ORF Clone

Product data:

Product Type: Expression Plasmids
Product Name: PSF2 (GINS2) (NM_016095) Human Tagged ORF Clone
Tag: Myc-DDK
Symbol: PSF2
Synonyms: HSPC037; Pfs2; PSF2
Mammalian Cell Selection: Neomycin
Vector: pCMV6-Entry (PS100001)
E. coli Selection: Kanamycin (25 ug/mL)
ORF Nucleotide Sequence: >RC200011 ORF sequence
Red=Cloning site Blue=ORF Green=Tags(s)

TTTTGTAATACGACTCACTATAGGGCGCCGGGAATTCGTCGACTGGATCCGGTACCGAGGAGATCTGCC
GCC**CGGATCGCC**

ATGGACGCTGCCGAGGTCTGAATTCCTCGCCGAGAAGGAGCTGGTTACCATTATCCCCAACTTCAGTCTGG
ACAAGATCTACCTCATCGGGGGGACCTGGGCCCTTTTAAACCCTGGTTTACCCGTGGAAGTGCCCTGTG
GCTGGCGATTAACCTGAAACAAAGACAGAAATGTCGCCTGCTCCCTCCAGAGTGGATGGATGTAGAAAAG
TTGGAGAAGATGAGGGATCATGAACGAAAGGAAGAACTTTTACCCCAATGCCAGCCCTTACTACATGG
AACTTACGAAGCTCCTGTTAAATCATGCTTCAGACAACATCCCGAAGGCAGACGAAATCCGGACCCTGGT
CAAGGATATGTGGGACACTCGTATAGCCAACTCCGAGTGTCTGCTGACAGCTTTGTGAGACAGCAGGAG
GCACATGCCAAGCTGGATAACTTGACCTTGATGGAGATCAACACCAGCGGACTTTCCTCACACAAGCGC
TCAACCACATGTACAACTCCGCACAACTCCAGCCTCTGGAGAGTACTCAGTCTCAGGACTTC

ACGCGTACGCGGCCGCTCGAGCAGAACTCATCTCAGAAGAGGATCTGGCAGCAATGATATCCTGGATT
ACAAGGATGACGACGATAAGGTTTAA

Protein Sequence: >RC200011 protein sequence
Red=Cloning site Green=Tags(s)

MDAAEVEFLAEKELVTIIPNFSLDKIYLIGGDLGPFNPGLPVEVPLWLA INLKQRQKCRLLPPEWMDVEK
LEKMRDHERKEETFTPMPSPYMELTKLLLNHASDNIPKADEIRTLVKDMWDTRIAKLRVSADSFVRQQE
AHAKLDNLTLMINTSGFTLTQALNHMYKLRNLQPLESTQSQDF

TRTRPLEQKLISEEDLAANDILDYKDDDDKV

Chromatograms: https://cdn.origene.com/chromatograms/mk6080_e01.zip



[View online »](#)

Restriction Sites: SgfI-MluI

Cloning Scheme:



ACCN: NM_016095

ORF Size: 555 bp

OTI Disclaimer: The molecular sequence of this clone aligns with the gene accession number as a point of reference only. However, individual transcript sequences of the same gene can differ through naturally occurring variations (e.g. polymorphisms), each with its own valid existence. This clone is substantially in agreement with the reference, but a complete review of all prevailing variants is recommended prior to use. [More info](#)

OTI Annotation: This clone was engineered to express the complete ORF with an expression tag. Expression varies depending on the nature of the gene.

Components: The ORF clone is ion-exchange column purified and shipped in a 2D barcoded Matrix tube containing 10ug of transfection-ready, dried plasmid DNA (reconstitute with 100 ul of water).

Reconstitution Method:

1. Centrifuge at 5,000xg for 5min.
2. Carefully open the tube and add 100ul of sterile water to dissolve the DNA.
3. Close the tube and incubate for 10 minutes at room temperature.
4. Briefly vortex the tube and then do a quick spin (less than 5000xg) to concentrate the liquid at the bottom.
5. Store the suspended plasmid at -20°C. The DNA is stable for at least one year from date of shipping when stored at -20°C.

Note: Plasmids are not sterile. For experiments where strict sterility is required, filtration with 0.22um filter is required.

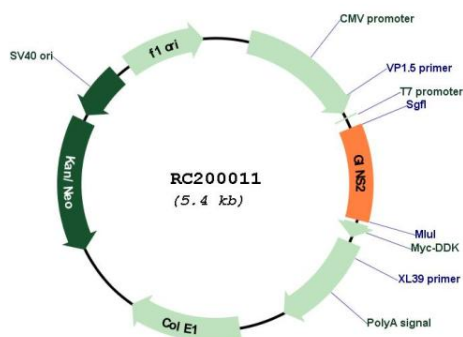
RefSeq: [NM_016095.3](#)

RefSeq Size: 1196 bp

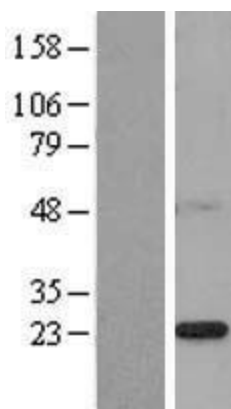
RefSeq ORF: 558 bp

Locus ID: 51659
UniProt ID: [Q9Y248](#)
Cytogenetics: 16q24.1
Domains: DUF392
Protein Families: Druggable Genome
MW: 21.4 kDa
Gene Summary: The yeast heterotetrameric GINS complex is made up of Sld5 (GINS4; MIM 610611), Psf1 (GINS1; MIM 610608), Psf2, and Psf3 (GINS3; MIM 610610). The formation of this complex is essential for the initiation of DNA replication in yeast and *Xenopus* egg extracts (Ueno et al., 2005 [PubMed 16287864]). See GINS1 for additional information about the GINS complex. [supplied by OMIM, Mar 2008]

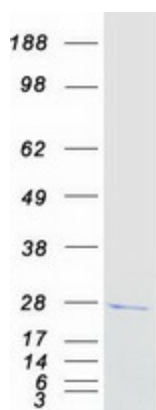
Product images:



Circular map for RC200011



Western blot validation of overexpression lysate (Cat# [LY402499]) using anti-DDK antibody (Cat# [TA50011-100]). Left: Cell lysates from untransfected HEK293T cells; Right: Cell lysates from HEK293T cells transfected with RC200011 using transfection reagent MegaTran 2.0 (Cat# [TT210002]).



Coomassie blue staining of purified GINS2 protein (Cat# [TP300011]). The protein was produced from HEK293T cells transfected with GINS2 cDNA clone (Cat# RC200011) using MegaTran 2.0 (Cat# [TT210002]).