

## Product datasheet for **RC200005**

### **DLL3 (NM\_016941) Human Tagged ORF Clone**

#### **Product data:**

Product Type:	Expression Plasmids
Product Name:	DLL3 (NM_016941) Human Tagged ORF Clone
Tag:	Myc-DDK
Symbol:	DLL3
Synonyms:	SCDO1
Mammalian Cell Selection:	Neomycin
Vector:	pCMV6-Entry (PS100001)
E. coli Selection:	Kanamycin (25 ug/mL)



[View online »](#)

**ORF Nucleotide Sequence:**

>RC200005 representing NM\_016941  
 Red=Cloning site Blue=ORF Green=Tags(s)

TTTTGTAATACGACTCACTATAGGGCGGCCGGAATTCGTCGACTGGATCCGGTACCGAGGAGATCTGCC  
 GCC**CGGATCGCC**

ATGGTCTCCCCACGGATGTCGGGCTCCTCTCCAGACTGTGATCCTAGCGCTCATTTTCTCCCCAGA  
 CACGGCCCGCTGGCGTCTTCGAGCTGCAGATCCACTCTTTGCGGCCGGTCCAGGCCCTGGGGCCCGCG  
 GTCCCCCTGCAGCGCCCGCTCCCTGCGCCTCTTCTCAGAGTCTGCCTGAAGCCTGGGCTCTCAGAG  
 GAGGCCGCGAGTCCCGTGCGCCCTGGGCGCGCGTGTAGTGCAGCGGACCGTCTACACCGAGCAGC  
 CCGGAGCGCCCGCCTGATCTCCACTGCCGACGGCTCTTGCAGGTGCCCTCCGGGACGCCTGGCC  
 TGGCACCTTCTTTTATCATCGAAACCTGGAGAGAGGAGTTAGGAGACCAGATTGGAGGGCCCGCTGG  
 AGCCTGTGGCGCGTGGCTGGCAGGCGCGCTTGGCAGCCGGAGGCCGTGGGCCCGGACATTACAGC  
 GCGCAGGCGCCTGGGAGTGCCTTCTCGTACCGCGCGCTGCGAGCCGCTGCCGTGGGACCGCGTG  
 CACGCGCTCTGCCGTCCGCGCAGCGCCCTCGCGGTGCGGTCCGGGACTGCGCCCTGCGCACCGCTC  
 GAGGACGAATGTGAGGCGCCGCTGGTGTGCCGAGCAGGCTGCAGCCCTGAGCATGGCTTCTGTGAACAGC  
 CCGGTGAATGCCGATGCCTAGAGGGCTGGACTGGACCCCTCTGCACGGTCCCTGTCTCCACCAGCAGCTG  
 CCTCAGCCCAGGGGCCGCTCTCTGCTACCACCGGATGCCTTGTCCCTGGGCTGGGCCCTGTGACGGG  
 AACCCGTGTGCAATGGAGGCAGCTGTAGTGAGACACCAGGTCCTTTGAATGCACCTGCCCGCTGGGT  
 TCTACGGGCTGCGGTGTGAGGTGAGCGGGTGACATGTGCAGATGGACCTGCTTCAACGGCGGCTTGTG  
 TGTGGGGGTGCAGACCTGACTCTGCCTACATCTGCCACTGCCACCCGGTTTCCAAGGCTCAACTGT  
 GAGAAGAGGTGGACCGGTGCAGCCTGCAGCCATGCCCAATGGCGACTCTGCCTGGACCTGGGCCACG  
 CCCTGCGCTGCCGTGCCGCGCCGGCTTCCGGGTCTCGCTGCGAGCAGACCTGGACGACTGCGCGGG  
 CCGCGCTGCGCTAACGGCGGCACGTGTGTGAGGGCGCGCGCACCGCTGCTCCTGCGCGCTGGGC  
 TTCGGCGCGCGACTGCCGCGAGCGCGGACCGTGCGCCGCGCGCCCTGTGCTCACGGCGCGCGCT  
 GCTACGCCACTTCTCCGGCTCGTCTGCGCTTCCGGCTACATGGGAGCGCGGTGTGAGTTCC  
 AGTGCACCCGACGGCGCAAGCGCTTGCCTCGGCCCGCGCGGCTCAGGCCCGGGACCCCTCAGCGC  
 TACCTTTGCTCCGGCTCTGGGACTGCTGTGGCGCGGGCTGGCCGGCGCTGCGCTTGTGCTGGTCC  
 ACGTGCGCCCGCTGGCCACTCCAGGATGCTGGGTCTCGCTTGTGGTGGGACCCCGGAGCCGTCAGT  
 CCACGCACTCCCGGATGCACTCAACAACCTAAGGACGACGAGGGTTCGGGGATGGTCCGAGCTCGTCC  
 GTAGATTGAATCGCCCTGAAGATGTAGACCCTCAAGGGATTTATGTCATATCTGCTCCTCCATCTACG  
 CTGGGAGGTAGCGACGCCCTTTTCCCCCGCTACACACTGGGCGCGCTGGGCAGAGGCAGCACCTGCT  
 TTTCCCTACCCTTCTCGATTCTGTCCTGAAA

**ACGCGT**ACGCGGCCGCTCGAGCAGAACTCATCTCAGAAGAGGATCTGGCAGCAATGATATCCTGGATT  
 ACAAGGATGACGACGATAAGGTTAA

**Protein Sequence:**

>RC200005 representing NM\_016941  
 Red=Cloning site Green=Tags(s)

MVSPRMSGLLSQTVILALIFLPQTRPAGVFELQIHSFGPGPGGAPRSPCSARLPCRLFFRVCLKPGLSE  
 EAAESPCALGAALSARGPVYTEQPGAPAPDLPLPDGLLQVPRDAWPGTFSFIIETWREELGDQIGGPAW  
 SLLARVAGRRRLAAGPWARDIQRAGAWELRFSYRARCEPPAVGTACTRLCRPRSAPSRCGPGLRPCAPL  
 EDECEAPLVCRAGCSPEHGFCEQPGECRCLEGTGPLCTVPVSTSSCLSPRGPSSATTGCLVPGPGPCDG  
 NPCANGGSCSETPRSFECTCPRGFYGLRCEVSGVTCADGPCFNGGLCVGGADPDSAYICHCPPGFQGSNC  
 EKRVDRCSLQPCRNGGLCLDLGHALRCRCRAGFAGPRCEHDLDDCAGRACANGGTCVEGGGAHRCSALG  
 FGGRDRCERADPCAARPCAHGGRCYAHFSGLVACAPGYMGARCEFPVHPDGASALPAAPPGLRPGDPQR  
 YLLPPLGALLVAAGVAGAALLLVHVRRRGHSQDAGSRLLAGTPEPSVHALPDALNNLRTQEESGDGPSSS  
 VDWNRPEDVDPQGIYVISAPSIYAREVATPLFPPLHTGRAGQRQHLLFPYPSSILSVK

**TR**TRPLEQKLISEEDLAANDILDYKDDDDKV

**Chromatograms:** [https://cdn.origene.com/chromatograms/mk8112\\_a01.zip](https://cdn.origene.com/chromatograms/mk8112_a01.zip)

**Restriction Sites:** SgfI-MluI

**Cloning Scheme:**



**ACCN:** NM\_016941

**ORF Size:** 1854 bp

**OTI Disclaimer:** The molecular sequence of this clone aligns with the gene accession number as a point of reference only. However, individual transcript sequences of the same gene can differ through naturally occurring variations (e.g. polymorphisms), each with its own valid existence. This clone is substantially in agreement with the reference, but a complete review of all prevailing variants is recommended prior to use. [More info](#)

**OTI Annotation:** This clone was engineered to express the complete ORF with an expression tag. Expression varies depending on the nature of the gene.

**Components:** The ORF clone is ion-exchange column purified and shipped in a 2D barcoded Matrix tube containing 10ug of transfection-ready, dried plasmid DNA (reconstitute with 100 ul of water).

**Reconstitution Method:**

1. Centrifuge at 5,000xg for 5min.
2. Carefully open the tube and add 100ul of sterile water to dissolve the DNA.
3. Close the tube and incubate for 10 minutes at room temperature.
4. Briefly vortex the tube and then do a quick spin (less than 5000xg) to concentrate the liquid at the bottom.
5. Store the suspended plasmid at -20°C. The DNA is stable for at least one year from date of shipping when stored at -20°C.

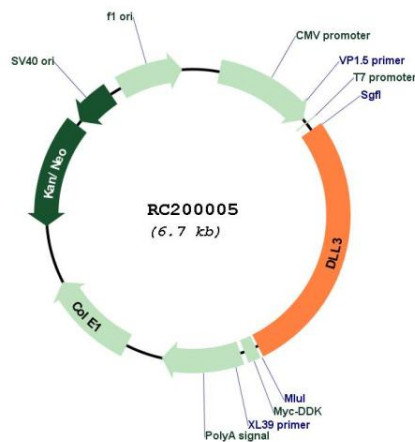
**Note:** Plasmids are not sterile. For experiments where strict sterility is required, filtration with 0.22um filter is required.

**RefSeq:** [NM\\_016941.4](#)

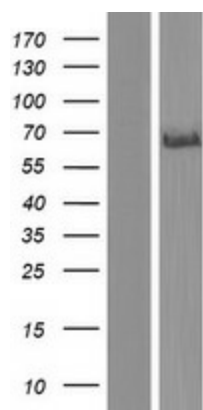
**RefSeq Size:** 2389 bp

RefSeq ORF:	1857 bp
Locus ID:	10683
UniProt ID:	<a href="#">Q9NYJ7</a>
Cytogenetics:	19q13.2
Domains:	EGF_CA, EGF, EGF
Protein Families:	Cancer stem cells, Druggable Genome, ES Cell Differentiation/IPS, Stem cell relevant signaling - DSL/Notch pathway, Transmembrane
Protein Pathways:	Notch signaling pathway
MW:	64.6 kDa
Gene Summary:	This gene encodes a member of the delta protein ligand family. This family functions as Notch ligands that are characterized by a DSL domain, EGF repeats, and a transmembrane domain. Mutations in this gene cause autosomal recessive spondylocostal dysostosis 1. Two transcript variants encoding distinct isoforms have been identified for this gene. [provided by RefSeq, Jul 2008]

### Product images:



Circular map for RC200005



Western blot validation of overexpression lysate (Cat# [LY413792]) using anti-DDK antibody (Cat# [TA50011-100]). Left: Cell lysates from untransfected HEK293T cells; Right: Cell lysates from HEK293T cells transfected with RC200005 using transfection reagent MegaTran 2.0 (Cat# [TT210002]).