

Product datasheet for **RC200002**

TMEM50B (NM_006134) Human Tagged ORF Clone

Product data:

Product Type: Expression Plasmids
Product Name: TMEM50B (NM_006134) Human Tagged ORF Clone
Tag: Myc-DDK
Symbol: TMEM50B
Synonyms: C21orf4; HCVP7TP3
Mammalian Cell Selection: Neomycin
Vector: pCMV6-Entry (PS100001)
E. coli Selection: Kanamycin (25 ug/mL)
ORF Nucleotide Sequence: >RC200002 representing NM_006134.
Blue=ORF Red=Cloning site Green=Tag(s)

```
GCTCGTTTGTAGTGAACCGTCAGAATTTTGTAAACGACTCACTATAGGGCCGCCGGGAATTCGTCGACTG
GATCCGGTACCGAGGAGATCTGCCGCCCGCATCGCC
ATGGCAGGCTTCCTAGATAATTTTCGTTGGCCAGAATGTGAATGTATTGACTGGAGTGAGAGAAGAAAT
GCTGTGGCATCTGTTGTCGCAGGTATATTGTTTTTACAGGCTGGTGGATAATGATTGATGCAGCTGTG
GTGTATCCTAAGCCAGAACAGTTGAACCATGCCTTTCACACATGTGGTGTATTTCCACATTGGCTTTC
TTCATGATAAATGCTGTATCCAATGCTCAGGTGAGAGGTGATAGCTATGAAAGCGGCTGTTTAGGAAGA
ACAGGTGCTCGAGTTTGGCTTTTCATTGGTTTCATGTTGATGTTGGGTCACTTATTGCTCCATGTGG
ATTCTTTTTGGTGCATATGTTACCCAAAATACTGATGTTTATCCGGGACTAGCTGTGTTTTTCAAAT
GCATTATATTTTTAGCACTCTGATCTACAAATTTGGAAGAACCGAAGACTATGGACC
ACGCGTACGCGGCCGCTCGAGCAGAACTCATCTCAGAAGAGGATCTGGCAGCAAATGATATCCTGGAT
TACAAGGATGACGACGATAAGGTTTAAACGGCCGGC
```

Protein Sequence: >Peptide sequence encoded by RC200002
Blue=ORF Red=Cloning site Green=Tag(s)

```
MAGFLDNFRWPECECIDWSERRNAVSVVAGILFFTGWWIMIDAAVVYPKPEQLNHAFHTCGVFSTLAF
FMINAVSNAQVRGDSYESGCLGRTGARVWLFIFMLMFGSLIASMWILFGAYVTQNTDVYPLAVFFQN
ALIFFSTLIYKFRTEELWT
TRTRPLEQKLISEEDLAANDILDYKDDDDKV
```

Chromatograms: https://cdn.origene.com/chromatograms/mk6387_c04.zip

Restriction Sites: SgfI-MluI



[View online »](#)

Cloning Scheme:


ACCN: NM_006134

ORF Size: 474 bp

OTI Disclaimer: The molecular sequence of this clone aligns with the gene accession number as a point of reference only. However, individual transcript sequences of the same gene can differ through naturally occurring variations (e.g. polymorphisms), each with its own valid existence. This clone is substantially in agreement with the reference, but a complete review of all prevailing variants is recommended prior to use. [More info](#)

OTI Annotation: This clone was engineered to express the complete ORF with an expression tag. Expression varies depending on the nature of the gene.

Components: The ORF clone is ion-exchange column purified and shipped in a 2D barcoded Matrix tube containing 10ug of transfection-ready, dried plasmid DNA (reconstitute with 100 ul of water).

- Reconstitution Method:**
1. Centrifuge at 5,000xg for 5min.
 2. Carefully open the tube and add 100ul of sterile water to dissolve the DNA.
 3. Close the tube and incubate for 10 minutes at room temperature.
 4. Briefly vortex the tube and then do a quick spin (less than 5000xg) to concentrate the liquid at the bottom.
 5. Store the suspended plasmid at -20°C. The DNA is stable for at least one year from date of shipping when stored at -20°C.

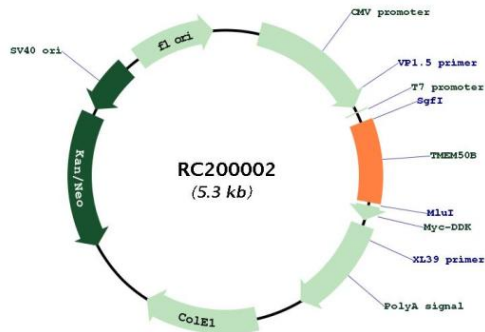
Note: Plasmids are not sterile. For experiments where strict sterility is required, filtration with 0.22um filter is required.

RefSeq: [NM_006134.7](#)

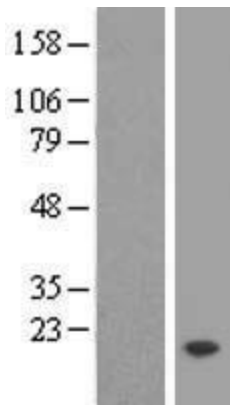
RefSeq Size: 2385 bp

RefSeq ORF: 477 bp

Locus ID: 757
UniProt ID: [P56557](#)
Cytogenetics: 21q22.11
Protein Families: Druggable Genome, Transmembrane
MW: 17.9 kDa

Product images:


Circular map for RC200002



Western blot validation of overexpression lysate (Cat# [LY416858]) using anti-DDK antibody (Cat# [TA50011-100]). Left: Cell lysates from untransfected HEK293T cells; Right: Cell lysates from HEK293T cells transfected with RC200002 using transfection reagent MegaTran 2.0 (Cat# [TT210002]).