

## Product Data Sheet for CellPainter Organelle Marker Vectors - Focal Adherin Fiber

**Catalog Number:** RC100120

**Description:** ZYX with C-mRFP tag for Focal Adherin Fiber marking (10ug transfection-grade plasmid). The plasmid was purified by ion-exchange column and then lyophilized.

**GeneBank Accession Number:** NM\_003461

**Cloning Vector:** pCMV6-AC-mRFP

**Bacterial selection marker:** Ampicilin (100ug/ul)

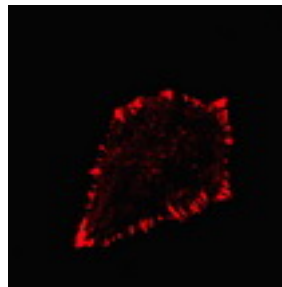
**Mammalian cell selection marker:**Neomycin

**Amount:** 10ug

**Storage Condition:** The product is shipped at ambient temperature. It should be stored at -20°C upon arrival.

**Application:** The vector can be used to transfect mammalian cells for fluorescent labeling of Focal Adherin Fiber. To amplify the plasmid, transform the plasmid into competent DH5alpha and select with 100ug/ml ampicilin.

**Validation Data:**



RC100120 was transfected into SKOV3 cells. The cells were fixed 30-36 hrs later and the image was generated with a confocal microscope.

### Brief Protocol:

1. Culture cells in log growth phase (about 60-70% confluence) in a 6 well-plate with sterile cover slides in wells.
2. Resuspend the CellPainter DNA in 20ul of water. Use 1-5 ug of DNA to perform transfection with the standard transfection techniques.  
When use OriGene's Turbofectin 8.0 transfection reagent, please see the [protocol](#)
3. Incubate cells for 30-36 hours in CO2 incubator. Do not culture cells longer than 48 hours.
4. Wash cells 1 x with cold PBS and then fix cells with 4% formaldehyde in PBS for 10-20 min at room temperature. Wash cells 3 x with cold PBS.
5. Carefully transfer the cover slip from well with cells face down to a glass slide with one drop of any commercial mounting medium with or without DAPI (for nuclear staining). We recommend to use VECTASHIELD® or VECTASHIELD® with DAPI mounting medium (Vector Laboratories. <http://www.vectorlabs.com>) which provides strong initial fluorescence and retards photobleaching over time for fluorescence microscopy. Seal cover slips with nail polish or a plastic sealant for long time storage. Mounted slides should be stored at 4 °C. The fluorescence will remain for at least several days.
6. View slides by confocal fluorescence microscopy within 24 - 48 hours.

**Note:** If immunofluorescent staining required for co-staining, follow the standard immunofluorescent staining protocol. Conventional fluorescent microscope can be used for viewing some of the organelle or subcellular structures. However the images are usually lack the desired clarity. Confocal microscope is strongly recommended for obtaining sharp organelle images. All of OriGene's validation data was obtained using a confocal microscope

---

***This product is to be used for laboratory only. Not for diagnostic or therapeutic use.***

© 2017 OriGene Technologies, Inc. 9620 Medical Center Dr., Suite 200, Rockville, MD 20850

---